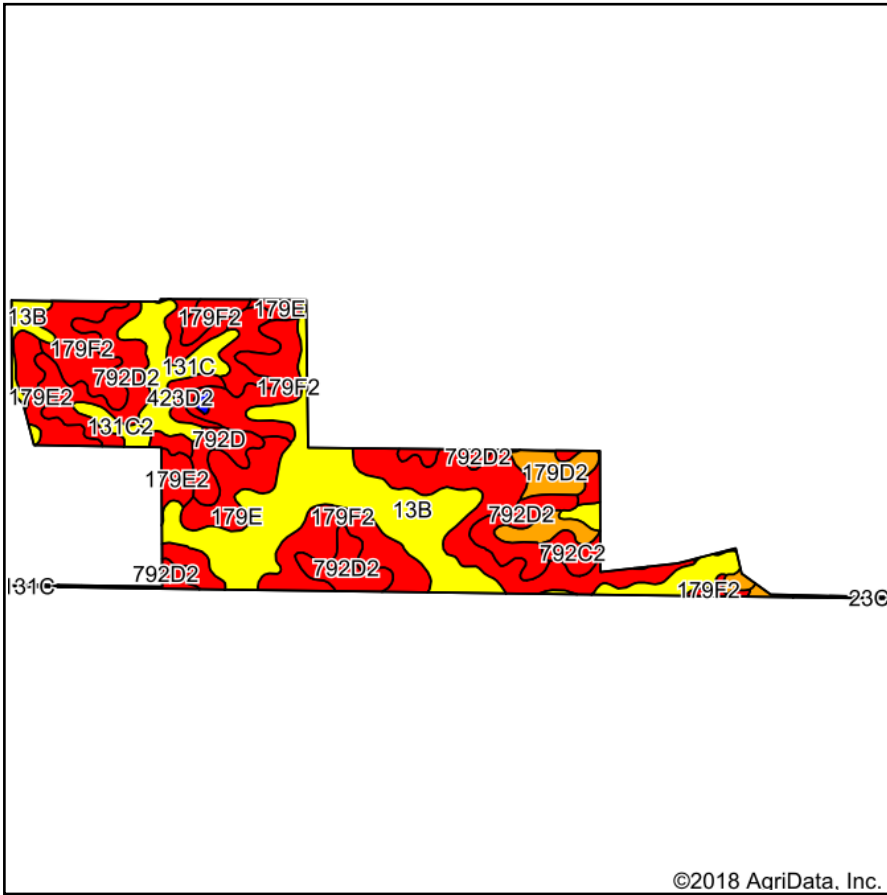
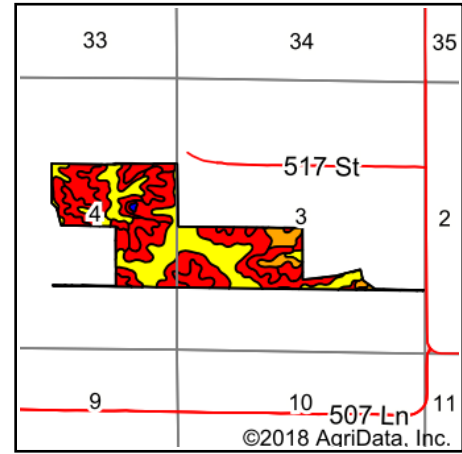


Soils Map



Soils data provided by USDA and NRCS.



State: **Iowa**
 County: **Lucas**
 Location: **3-72N-23W**
 Township: **Jackson**
 Acres: **209**
 Date: **8/22/2018**

PEOPLES COMPANY
 INNOVATIVE. REAL ESTATE. SOLUTIONS.

Maps Provided By:

 CUSTOMIZED ONLINE MAPPING
 © AgriData, Inc. 2018 www.AgridataInc.com



Area Symbol: IA117, Soil Area Version: 25

Code	Soil Description	Acres	Percent of field	CSR2 Legend	Non-Irr Class *c	*i Corn	*i Soybeans	CSR2**	CSR	NCCPI Overall	NCCPI Corn	NCCPI Small Grains
13B	Zook-Olmitz-Vesser complex, 0 to 5 percent slopes	49.25	23.6%		Ilw	200	58	68	53	80	79	14
179F2	Gara clay loam, 18 to 25 percent slopes, moderately eroded	38.44	18.4%		IVe	115.2	33.4	11	13	46	46	26
792D2	Armstrong clay loam, 9 to 14 percent slopes, moderately eroded	31.98	15.3%		IVe	88	25.5	5	13	51	51	38
179E2	Gara clay loam, 14 to 18 percent slopes, moderately eroded	31.75	15.2%		Vle	139.2	40.4	23	33	55	55	38
179E	Gara loam, 14 to 18 percent slopes	13.03	6.2%		Vle	144	41.8	24	35	68	68	55
131C	Pershing silt loam, 5 to 9 percent slopes	11.49	5.5%		Ille	80	23.2	65	49	72	72	44
792D	Armstrong loam, 9 to 14 percent slopes	10.26	4.9%		IVe	99.2	28.8	28	18	70	70	43
179D2	Gara clay loam, 9 to 14 percent slopes, moderately eroded	6.54	3.1%		IVe	163.2	47.3	45	43	64	64	44
423D2	Bucknell silty clay loam, 9 to 14 percent slopes, moderately eroded	4.41	2.1%		IVe	97.6	28.3	7	13	60	60	35
452C2	Lineville silt loam, 5 to 9 percent slopes, moderately eroded	3.49	1.7%		Ille	80	23.2	46	31	64	64	27
792C2	Armstrong clay loam, 5 to 9 percent slopes, moderately eroded	3.14	1.5%		Ille	123.2	35.7	24	27	53	53	34
131C2	Pershing silty clay loam, 5 to 9 percent slopes, moderately eroded	2.53	1.2%		Ille	80	23.2	62	45	59	59	35
23C2	Arispe silty clay loam, 5 to 9 percent slopes, moderately eroded	1.51	0.7%		Ille	80	23.2	62	50	82	82	49
W	Water	0.53	0.3%			0	0	0	0		0	0
223C2	Rinda silty clay loam, 5 to 9 percent slopes, moderately eroded	0.43	0.2%		IVw	126.4	36.7	45	22	54	54	16
364B	Grundy silty clay loam, 2 to 5 percent slopes	0.15	0.1%		Ile	80	23.2	72	75	78	78	44
131B	Pershing silt loam, 2 to 5 percent slopes	0.07	0.0%		Ille	80	23.2	70	67	73	73	45

