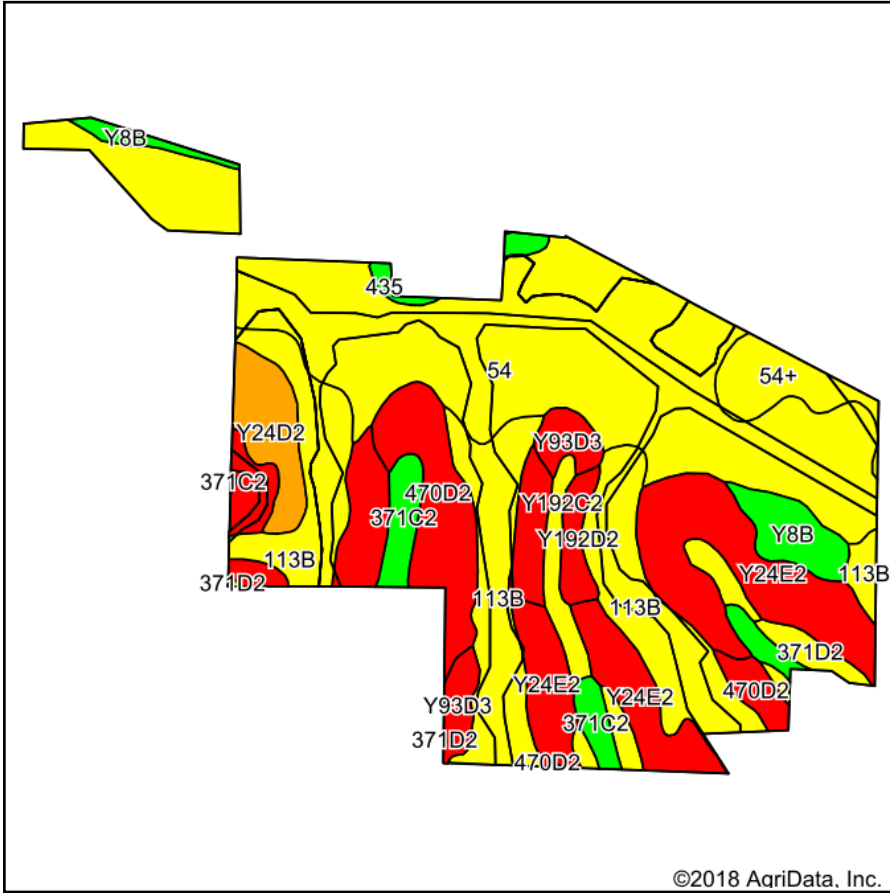
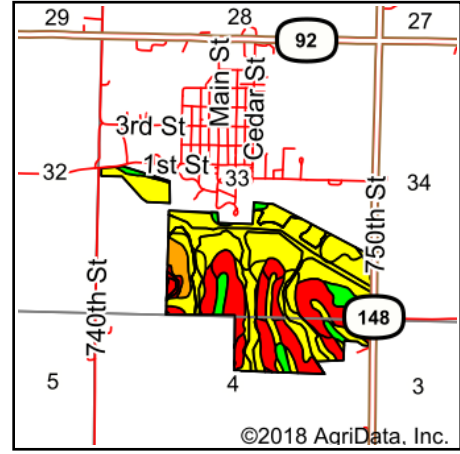


# Total Soils Map



Soils data provided by USDA and NRCS.



State: **Iowa**  
 County: **Cass**  
 Location: **33-75N-34W**  
 Township: **Massena**  
 Acres: **221.24**  
 Date: **10/3/2018**

**PC PEOPLES COMPANY**  
 INNOVATIVE. REAL ESTATE. SOLUTIONS.

Maps Provided By:



Area Symbol: IA029, Soil Area Version: 25

Code	Soil Description	Acres	Percent of field	CSR2 Legend	Non-Irr Class *c	CSR2**	CSR	NCCPI Overall	NCCPI Soybeans
54	Zook silty clay loam, 0 to 2 percent slopes, occasionally flooded	76.83	34.7%		IIw	67	59	71	62
113B	Colo, overwash-Ely complex, 2 to 5 percent slopes	42.18	19.1%		IIw	69	59	92	79
Y24E2	Shelby clay loam, dissected till plain, 14 to 18 percent slopes, eroded	30.57	13.8%		IVe	35	30	64	49
470D2	Lamoni-Shelby complex, 9 to 14 percent slopes, moderately eroded	18.78	8.5%		IVe	27	35	58	42
Y93D3	Shelby-Adair clay loams, dissected till plain, 9 to 14 percent slopes, severely eroded	12.80	5.8%		IVe	32	31	43	31
371C2	Sharpsburg-Nira complex, 5 to 9 percent slopes, moderately eroded	6.83	3.1%		IIIe	79	69	72	64
Y24D2	Shelby clay loam, dissected till plain, 9 to 14 percent slopes, eroded	6.78	3.1%		IIIe	49	42	68	53
Y8B	Judson silty clay loam, dissected till plain, 2 to 5 percent slopes	6.45	2.9%		Ile	93	85	90	78
54+	Zook silt loam, 0 to 2 percent slopes, occasionally flooded, overwash	6.29	2.8%		IIw	69	63	75	60
Y192C2	Adair clay loam, dissected till plain, 5 to 9 percent slopes, eroded	5.12	2.3%		IIIe	51	52	55	42
371D2	Sharpsburg-Nira complex, 9 to 14 percent slopes, moderately eroded	4.37	2.0%		IIIe	55	47	78	66
Y192D2	Adair clay loam, dissected till plain, 9 to 14 percent slopes, eroded	2.79	1.3%		IVe	29	28	53	39
435	Zook-Mt. Sterling complex, 0 to 2 percent slopes, occasionally flooded	1.45	0.7%		IIw	73	64	74	66
<b>Weighted Average</b>						<b>57.1</b>	<b>51.2</b>	<b>71.5</b>	<b>59.5</b>

\*\*IA has updated the CSR values for each county to CSR2.

\*c: Using Capabilities Class Dominant Condition Aggregation Method

Soils data provided by USDA and NRCS.