

LISTING #14431

# WAYNE COUNTY, IA

FARMLAND AVAILABLE



LISTING AGENT

**JARED CHAMBERS**

641.414.0234

JARED@PEOPLES COMPANY.COM



PeoplesCompany.com

**160**

ACRES M/L

**\$3,500**

PER ACRE OR \$560,000





LISTING #14431

# WAYNE COUNTY, IA

FARMLAND AVAILABLE

# 160

ACRES M/L

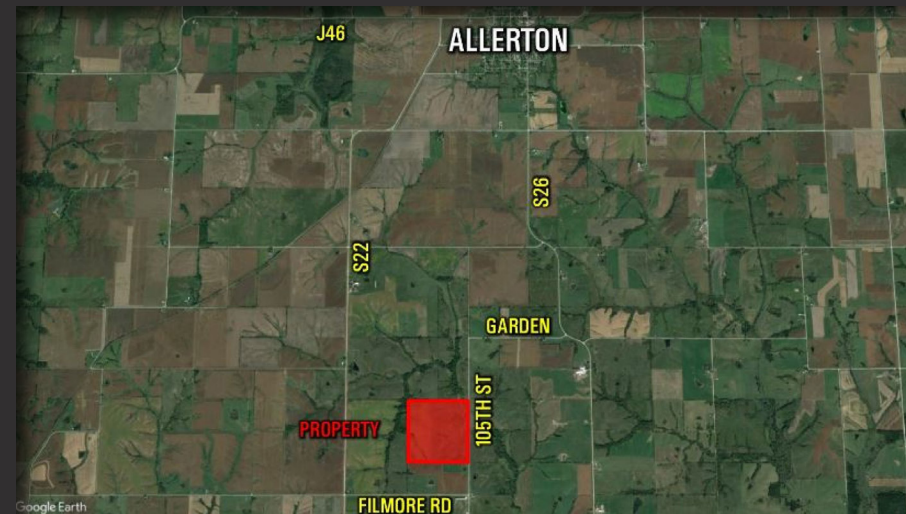
# \$3,500

PER ACRE OR \$560,000

## DESCRIPTION

Peoples Company is proud to offer 160 acres m/l of Wayne County farmland located just a few miles south of Allerton, Iowa. This farmland is approximately 82% tillable and carries an average CSR2 of 42.7 across the tillable soils. Currently, there are 61.2 acres being farmed in a corn/bean no-till rotation along with 77.89 acres enrolled into a CP1 CRP program. The CRP payment is \$179.68 per acre and expires in 2026.

With the middle fork of Medicine Creek cutting across the northeast corner of this farm there is an abundance of recreational opportunities throughout this farm, from deer hunting to bird hunting and more. The seller would be interested in doing a lease-back on the tillable acres or the new owner can have full farming rights for crop year 2019 and beyond.



## DIRECTIONS

From Allerton, Iowa travel south on County Highway S26 approximately 2 miles to Garden Road. Travel west along Garden Road for approximately 1 mile to 105th Street. Turn south on 105th Street and the farm will be ½ mile to the south along the west side of 105th Street. Watch for Peoples Company signs.

Or, if traveling along County Highway S22 between Allerton and Clio, turn east onto Fillmore Road and travel east to 105th Street and turn north. The farm will begin ¼ mile north along 105th Street on the west side of the road. Watch for Peoples Company signs.



## DETAILS

139.07 estimated FSA Cropland Acres – subject to reconstitution.

61.2 acres currently tillable in a corn/bean no-till rotation.

77.84 acres of CP1 – CRP contract paying \$179.68 per acre or \$13,986.29 annually, expiring in 2026.

*Please visit our website for more information, including detailed FSA information, maps and pictures.*

[PeoplesCompany.com](http://PeoplesCompany.com)

**PEOPLES**  
COMPANY  
INNOVATIVE. REAL ESTATE. SOLUTIONS.

LISTING AGENT | **JARED CHAMBERS** | 641.414.0234 | [JARED@PEOPLES COMPANY.COM](mailto:JARED@PEOPLES COMPANY.COM)





12119 Stratford Drive, Suite B  
Clive, IA 50325  
[PeoplesCompany.com](http://PeoplesCompany.com)



**160** ACRES M/L

# WAYNE COUNTY, IA

FARMLAND AVAILABLE



LISTING AGENT  
**JARED CHAMBERS**  
641.414.0234  
[JARED@PEOPLES COMPANY.COM](mailto:JARED@PEOPLES COMPANY.COM)