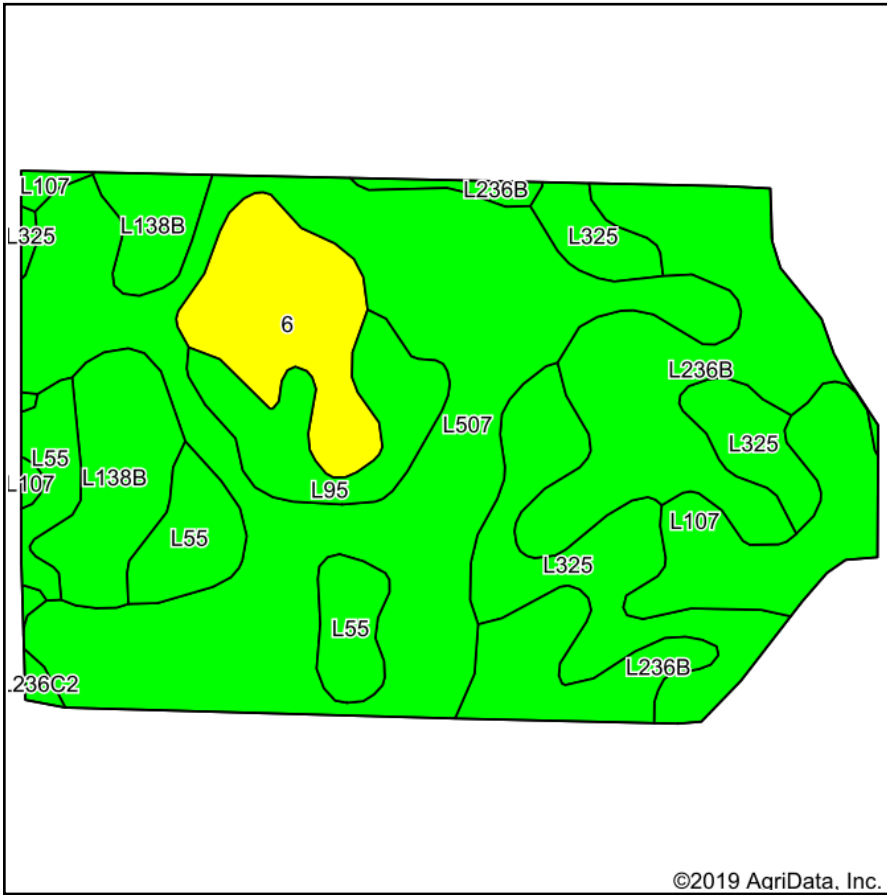
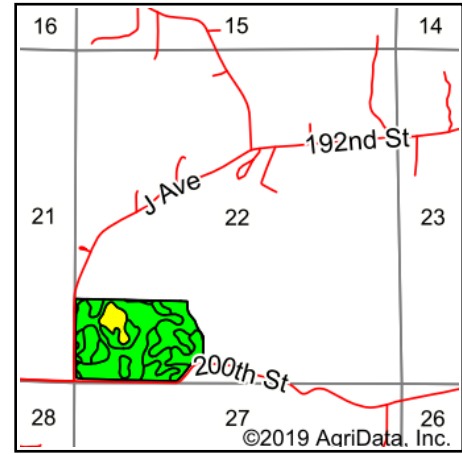


Tillable Soils Map



Soils data provided by USDA and NRCS.

©2019 AgriData, Inc.



State: **Iowa**
 County: **Boone**
 Location: **22-84N-27W**
 Township: **Yell**
 Acres: **56.03**
 Date: **2/21/2019**



Maps Provided By:



© AgriData, Inc. 2019

www.AgriDataInc.com



Area Symbol: IA015, Soil Area Version: 26

Code	Soil Description	Acres	Percent of field	CSR2 Legend	Non-Irr Class *c	CSR2**	CSR	*n NCCPI Overall
L507	Canisteo clay loam, Bemis moraine, 0 to 2 percent slopes	19.55	34.9%		Ilw	87		79
L236B	Lester loam, Bemis moraine, 2 to 6 percent slopes	10.29	18.4%		Ile	85		89
L325	Le Sueur loam, Bemis moraine, 1 to 3 percent slopes	7.14	12.7%		Ie	78		93
L138B	Clarion loam, Bemis moraine, 2 to 6 percent slopes	4.27	7.6%		Ile	88		79
6	Okoboji silty clay loam, 0 to 1 percent slopes	4.06	7.2%		Illw	59	58	80
L107	Webster clay loam, Bemis moraine, 0 to 2 percent slopes	3.90	7.0%		Ilw	88		80
L55	Nicollet loam, 1 to 3 percent slopes	3.72	6.6%		Ie	91		83
L95	Harps clay loam, Bemis moraine, 0 to 2 percent slopes	2.94	5.2%		Ilw	75		76
L236C2	Lester loam, Bemis moraine, 6 to 10 percent slopes, moderately eroded	0.16	0.3%		IIIe	77		65
Weighted Average						83.2	*-	*n 82.8

**IA has updated the CSR values for each county to CSR2.

*- CSR weighted average cannot be calculated on the current soils data, use prior data version for csr values.

*n: The aggregation method is "Weighted Average using major components"

*c: Using Capabilities Class Dominant Condition Aggregation Method

Soils data provided by USDA and NRCS.