



AUDUBON COUNTY  
**FARMLAND  
AVAILABLE**



LISTING #14473

PeoplesCompany.com

**116**  
ACRES M/L

**MATT ADAMS**

515.423.9235 [Matt@PeoplesCompany.com](mailto:Matt@PeoplesCompany.com)



## OFFERING 116 ACRES M/L

of highly productive Audubon County farmland. This tract has approximately 89.57 acres m/l currently in row crop production carrying a CSR2 of 71.1. The balance of the property includes 15.2 acres enrolled in CRP (Conservation Reserve Program) until 2023 with an annual payment of \$3,208 (\$211.04 per acre). The CRP practice is CP1 (Grasses & Legumes). Primary soil types include high producing loam soils of Judson-Colo-Ackmore, Marshall, and Judson Silty Clay Loam. Conservation practices have been actively applied with farming done on the contour, established waterways, and strategic terracing. Farm has been leased for the 2019 year. The farm is located just east of Exira, Iowa, in Section 2 of Exira Township.

## FARM DETAILS

FSA Cropland Acres: 104.77

Corn: 58.8 Base Acres with a PLC Yield of 103

Soybeans: 30.5 Base Acres with a PLC Yield of 34

Farm is enrolled in ARC-CO.

Total CRP - 15.20 acres enrolled into CP1 program paying \$211.04 per acre or approximately \$3,208 annually expiring in 2023.



**MATT ADAMS**

**EXIRA, IOWA**







# AUDUBON COUNTY FARMLAND 116 ACRES M/L

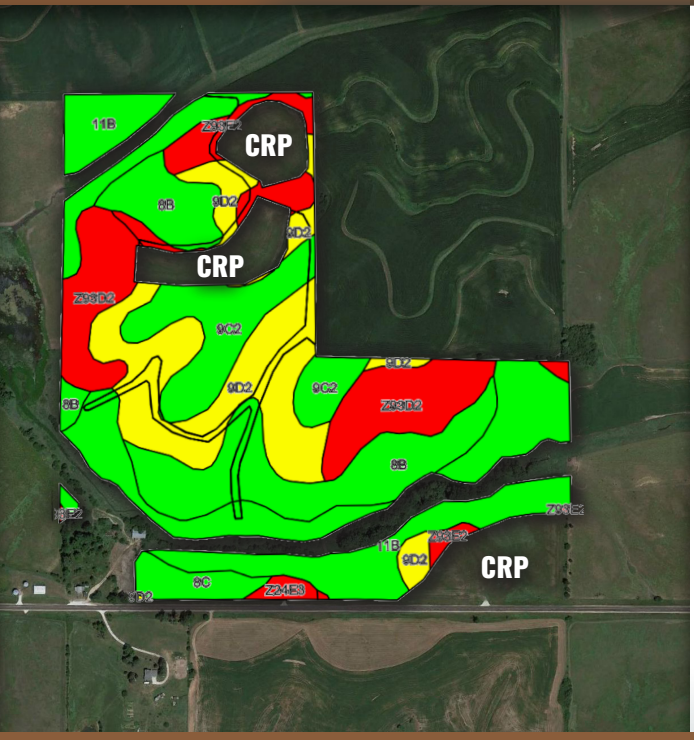


**PRICE: \$812,000**  
**PRICE/ACRE: \$7,000**  
**GROSS TAXES: \$2,916**



**LISTING #14473**

| 515.423.9235 | Matt@PeoplesCompany.com



## TILLABLE SOILS MAP

Code	Soil Description	Acres	Percent of Field	Legend	CSR2
11B	Judson-Colo-Ackmore complex	25.34	28.3%	<span style="color: green;">■</span>	81
9D2	Marshall silty clay loam	17.83	19.9%	<span style="color: yellow;">■</span>	61
8B	Judson silty clay loam, deep loess	16.89	18.9%	<span style="color: red;">■</span>	92
Z93D2	Shelby-Adair clay loams, deep loess	12.37	13.8%	<span style="color: red;">■</span>	38
9C2	Marshall silty clay loam	9.67	10.8%	<span style="color: green;">■</span>	87
Z93E2	Shelby-Adair clay loams, deep loess	4.29	4.8%	<span style="color: red;">■</span>	29
8C	Judson silty clay loam, deep loess	2.42	2.7%	<span style="color: green;">■</span>	87

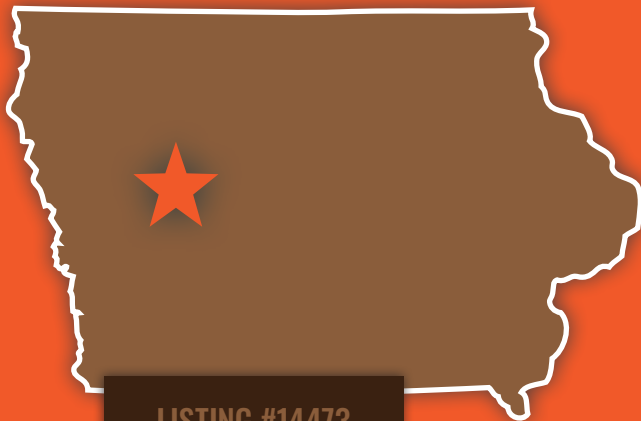
**Weighted Average 71.1**





12119 Stratford Dr, Ste B  
Clive, IA 50325  
**PeoplesCompany.com**

# AUDUBON COUNTY FARMLAND AVAILABLE



**LISTING #14473**

**MATT ADAMS: 515.423.9235**  
**Matt@PeoplesCompany.com**

