

# WARREN COUNTY

## LAND FOR SALE

**Daran Becker: 515.979.3498**  
Daran@PeoplesCompany.com

**PEOPLES<sup>TM</sup>**  
COMPANY  
INNOVATIVE. REAL ESTATE. SOLUTIONS.  
PeoplesCompany.com

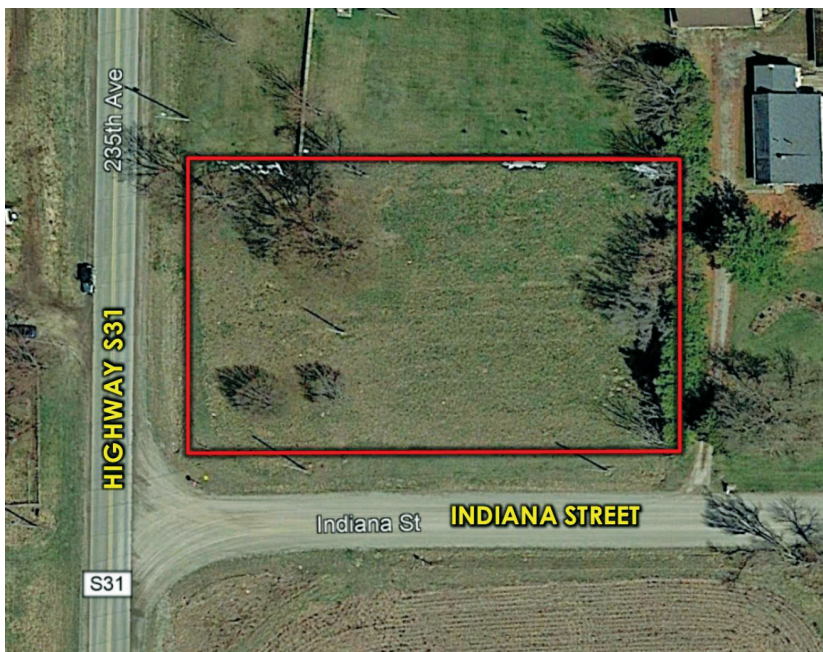
SANDYVILLE

HIGHWAY 92

HIGHWAY S31

BEECH

0.94  
Acre M/L



## 23529 INDIANA STREET PLEASANTVILLE, IA 50225

**ASKING PRICE:** \$35,000

**LISTING:** #14506

**MLS NUMBER:** 581312

**PARCEL NUMBER:** 25000230247

**ZONING:** Residential

**NET TAXES:** \$14.00

**POSSESSION:** At Closing

**TERMS:** Cash, Conventional

### ABOUT THE PROPERTY

Offering a .94 acre m/l lot on Highway S31 in the quaint town of Beech, IA. This lot boasts mature trees and plenty of room to build whatever you desire with only county covenants. Only a short distance from Des Moines, Pleasantville, and Indianola. Water and electric are available on site. Located in Pleasantville School District. Come take a look!

### DIRECTIONS

From Indianola, IA head east on Highway 92 to Highway S31. Turn north on Highway S31 and travel approximately .25 miles and the property lies on the east side of the road.

