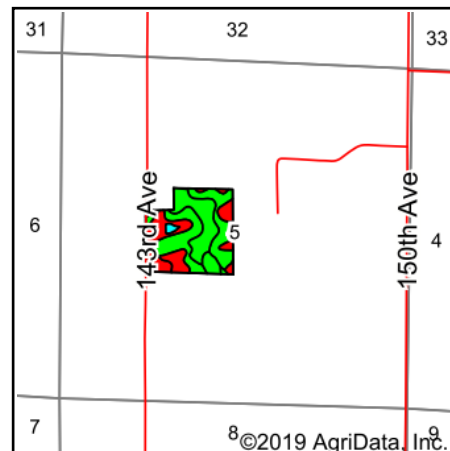
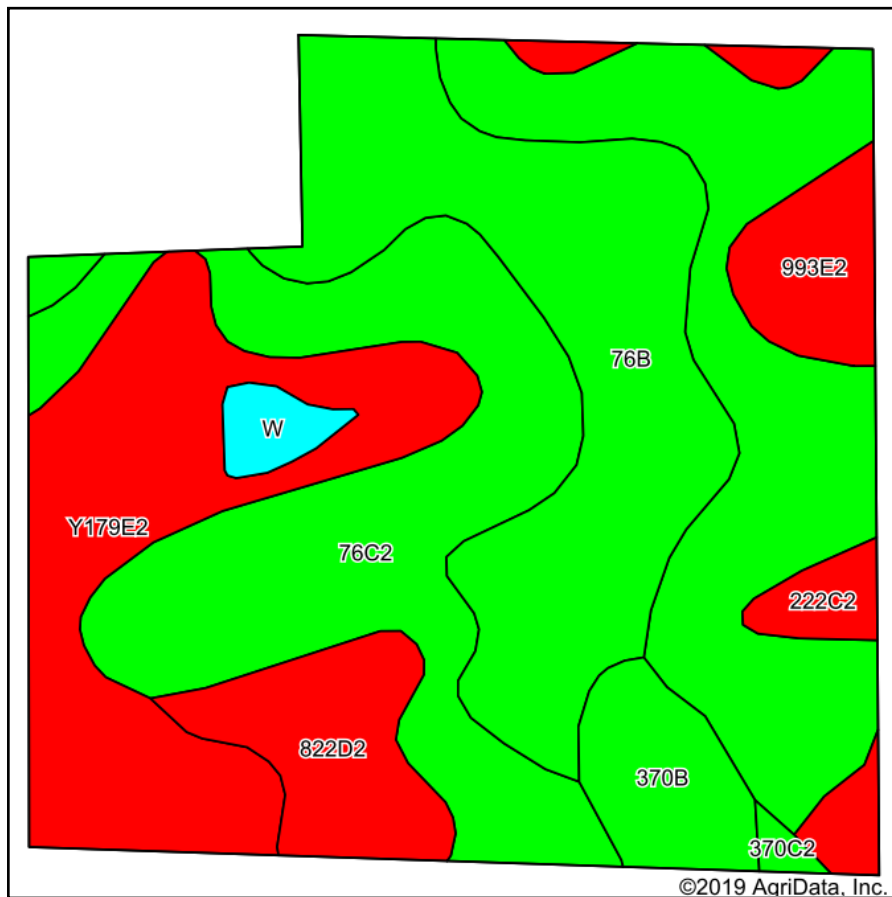


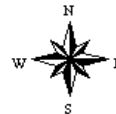
Soils Map



State: **Iowa**
 County: **Warren**
 Location: **5-76N-23W**
 Township: **Lincoln**
 Acres: **36.88**
 Date: **5/24/2019**

PC PEOPLES
 COMPANY
 INNOVATIVE. REAL ESTATE. SOLUTIONS.

Maps Provided By:
surety
 CUSTOMIZED ONLINE MAPPING
 © AgriData, Inc. 2019 www.AgriDataInc.com



Area Symbol: IA181, Soil Area Version: 23

Code	Soil Description	Acres	Percent of field	CSR2 Legend	Non-Irr Class *c	CSR2**	CSR	*n NCCPI Overall	*n NCCPI Soybeans
76C2	Ladoga silt loam, dissected till plain, 5 to 9 percent slopes, eroded	15.30	41.5%		Ille	75	65	64	63
76B	Ladoga silt loam, 2 to 5 percent slopes	8.25	22.4%		Ile	86	85	82	78
Y179E2	Gara loam, dissected till plain, 14 to 18 percent slopes, eroded	6.35	17.2%		Vle	32		65	48
822D2	Lamoni silty clay loam, 9 to 14 percent slopes, eroded	2.19	5.9%		IVe	10	15	53	40
993E2	Armstrong-Gara loams, 14 to 18 percent slopes, moderately eroded	1.68	4.6%		Vle	17	5	57	41
370B	Sharpsburg silty clay loam, 2 to 5 percent slopes	1.58	4.3%		Ile	91	87	93	77
222C2	Clarinda silty clay loam, 5 to 9 percent slopes, moderately eroded	0.91	2.5%		IVw	28	25	45	38
W	Water	0.47	1.3%			0	0		0
370C2	Sharpsburg silty clay loam, 5 to 9 percent slopes, eroded	0.15	0.4%		Ille	80	67	71	63
Weighted Average						62.1	*-	*n 67.2	*n 60.6

**IA has updated the CSR values for each county to CSR2.

*- CSR weighted average cannot be calculated on the current soils data, use prior data version for csr values.

*n: The aggregation method is "Weighted Average using major components"

*c: Using Capabilities Class Dominant Condition Aggregation Method