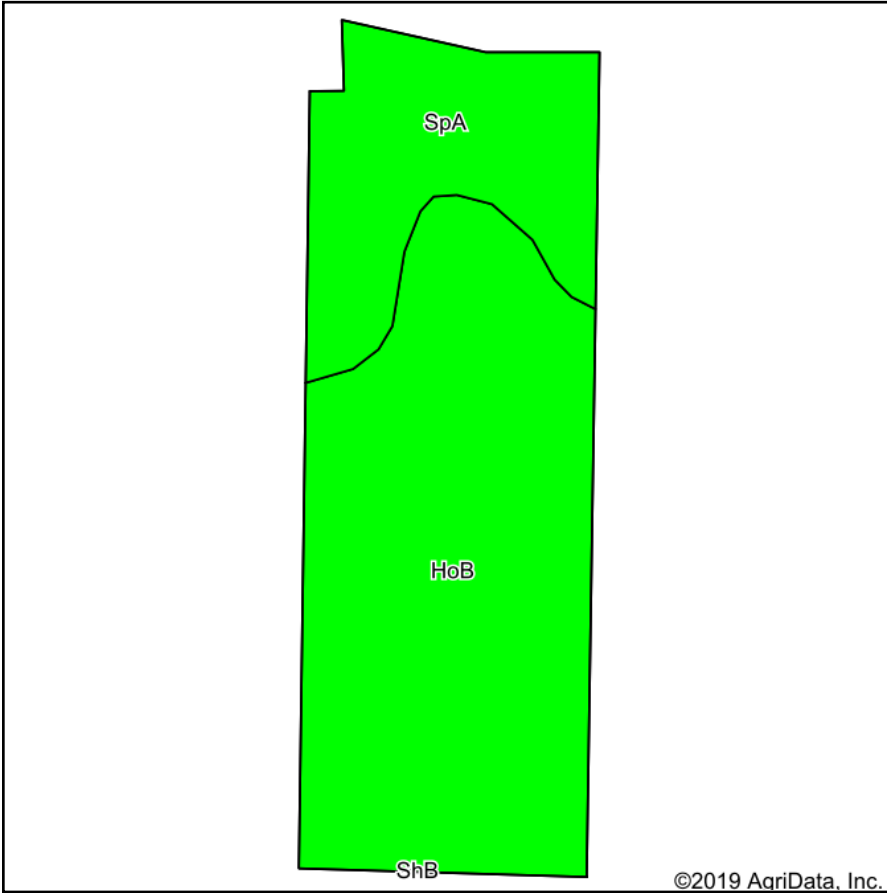
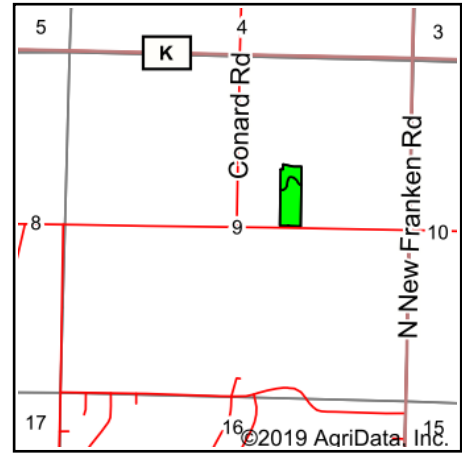


Tillable Soils Map



Soils data provided by USDA and NRCS.



State: **Wisconsin**
 County: **Brown**
 Location: **9-24N-22E**
 Township: **Scott**
 Acres: **6.88**
 Date: **6/13/2019**



Maps Provided By:



© AgriData, Inc. 2019

www.AgriDataInc.com



Area Symbol: WI009, Soil Area Version: 12					
Code	Soil Description	Acres	Percent of field	Non-Irr Class Legend	Non-Irr Class *c
HoB	Hochheim loam, 2 to 6 percent slopes	4.98	72.4%		IIe
SpA	Solona loam, 1 to 3 percent slopes	1.90	27.6%		IIw

*c: Using Capabilities Class Dominant Condition Aggregation Method
 Soils data provided by USDA and NRCS.