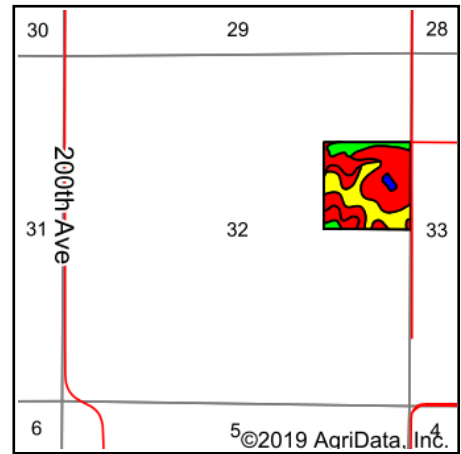
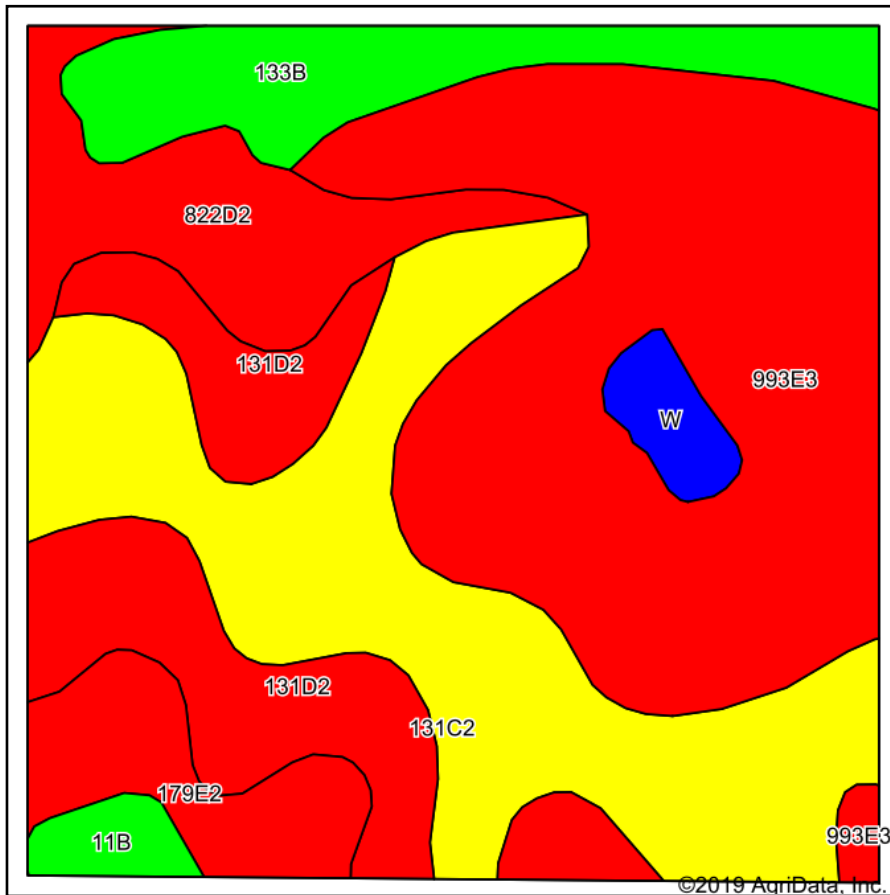


# Soils Map



State: **Iowa**  
 County: **Warren**  
 Location: **32-74N-22W**  
 Township: **White Breast**  
 Acres: **40**  
 Date: **6/18/2019**



Soils data provided by USDA and NRCS.

Area Symbol: IA181, Soil Area Version: 23												
Code	Soil Description	Acres	Percent of field	CSR2 Legend	Non-Irr Class *c	*i Corn	*i Soybeans	CSR2**	CSR	*n NCCPI Overall	*n NCCPI Corn	*n NCCPI Soybeans
993E3	Armstrong-Gara clay loams, 14 to 18 percent slopes, severely eroded	13.65	34.1%		Vlle	88	25.5	14	5	42	42	31
131C2	Pershing silt loam, 5 to 9 percent slopes, moderately eroded	10.26	25.6%		IIIe	80	23.2	62	50	60	60	49
131D2	Pershing silt loam, 9 to 14 percent slopes, moderately eroded	5.61	14.0%		IVe	80	23.2	37	40	61	61	56
822D2	Lamoni silty clay loam, 9 to 14 percent slopes, eroded	3.53	8.8%		IVe	100.8	29.2	10	15	53	53	40
133B	Colo silty clay loam, dissected till plain, 2 to 5 percent slopes, occasionally flooded	3.42	8.5%		IIw	177.6	51.5	74	75	96	96	80
179E2	Gara loam, 14 to 18 percent slopes, moderately eroded	2.20	5.5%		Vle	139.2	40.4	24	33	56	56	41
W	Water	0.73	1.8%			0	0	0	0			0
11B	Colo-Ely silty clay loams, 2 to 5 percent slopes	0.60	1.5%		IIw	204.8	59.4	83	65	96	96	85
<b>Weighted Average</b>						<b>96.6</b>	<b>28</b>	<b>35.6</b>	<b>30.7</b>	<b>*n 55.7</b>	<b>*n 55.7</b>	<b>*n 44.9</b>

\*\*IA has updated the CSR values for each county to CSR2.

\*i Yield data provided by the ISPAID Database version 8.1.1 developed by IA State University.

\*n: The aggregation method is "Weighted Average using major components"

\*c: Using Capabilities Class Dominant Condition Aggregation Method

Soils data provided by USDA and NRCS.