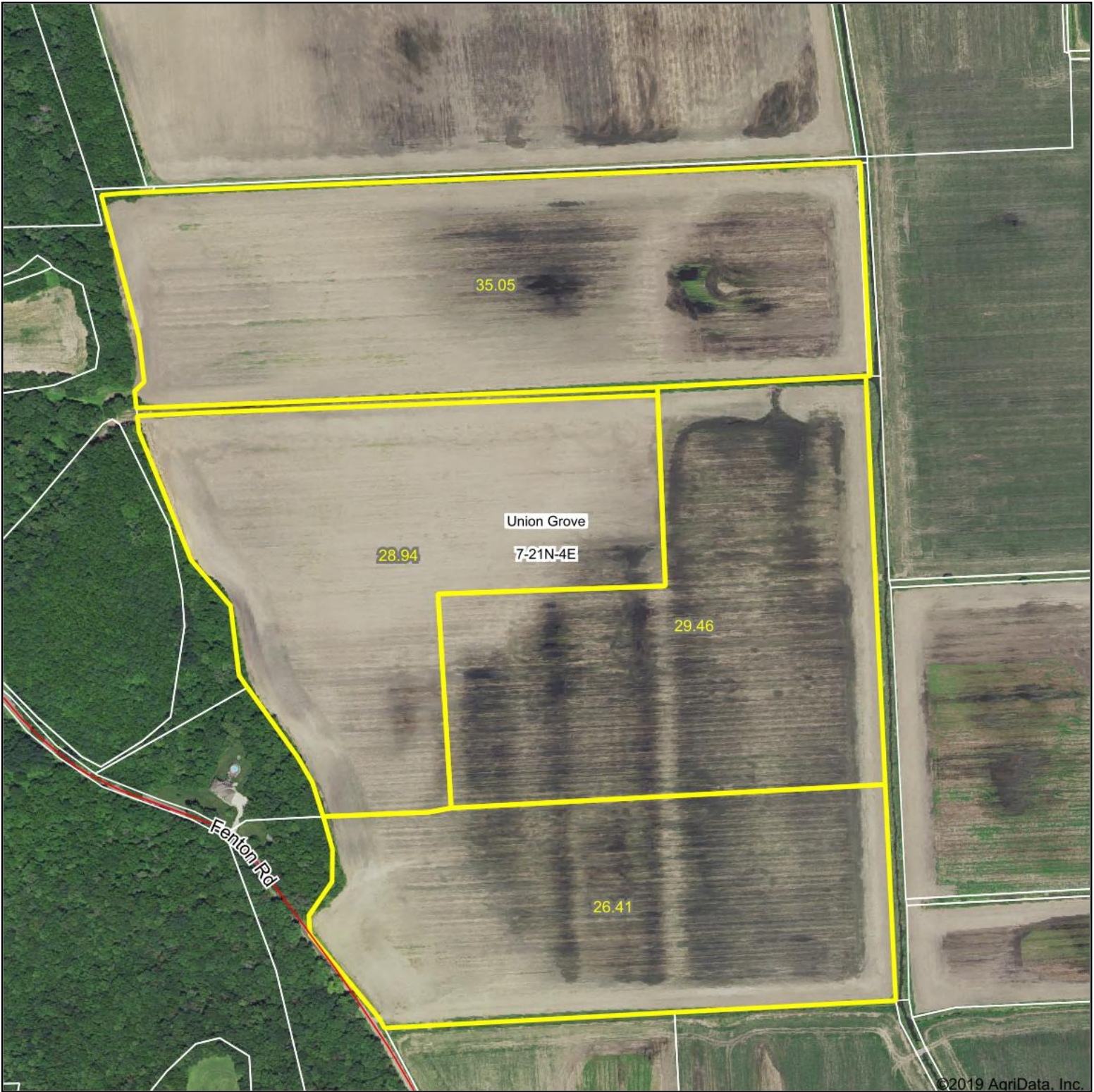


Aerial Map - Estimated Tillable Acres



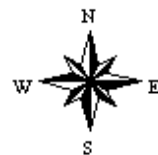
©2019 AgriData, Inc.



Map Center: 41° 49' 22.4, -90° 5' 8.86



7-21N-4E
Whiteside County
Illinois



7/24/2019



Field borders provided by Farm Service Agency as of 5/21/2008. Soils data provided by University of Illinois at Champaign-Urbana.