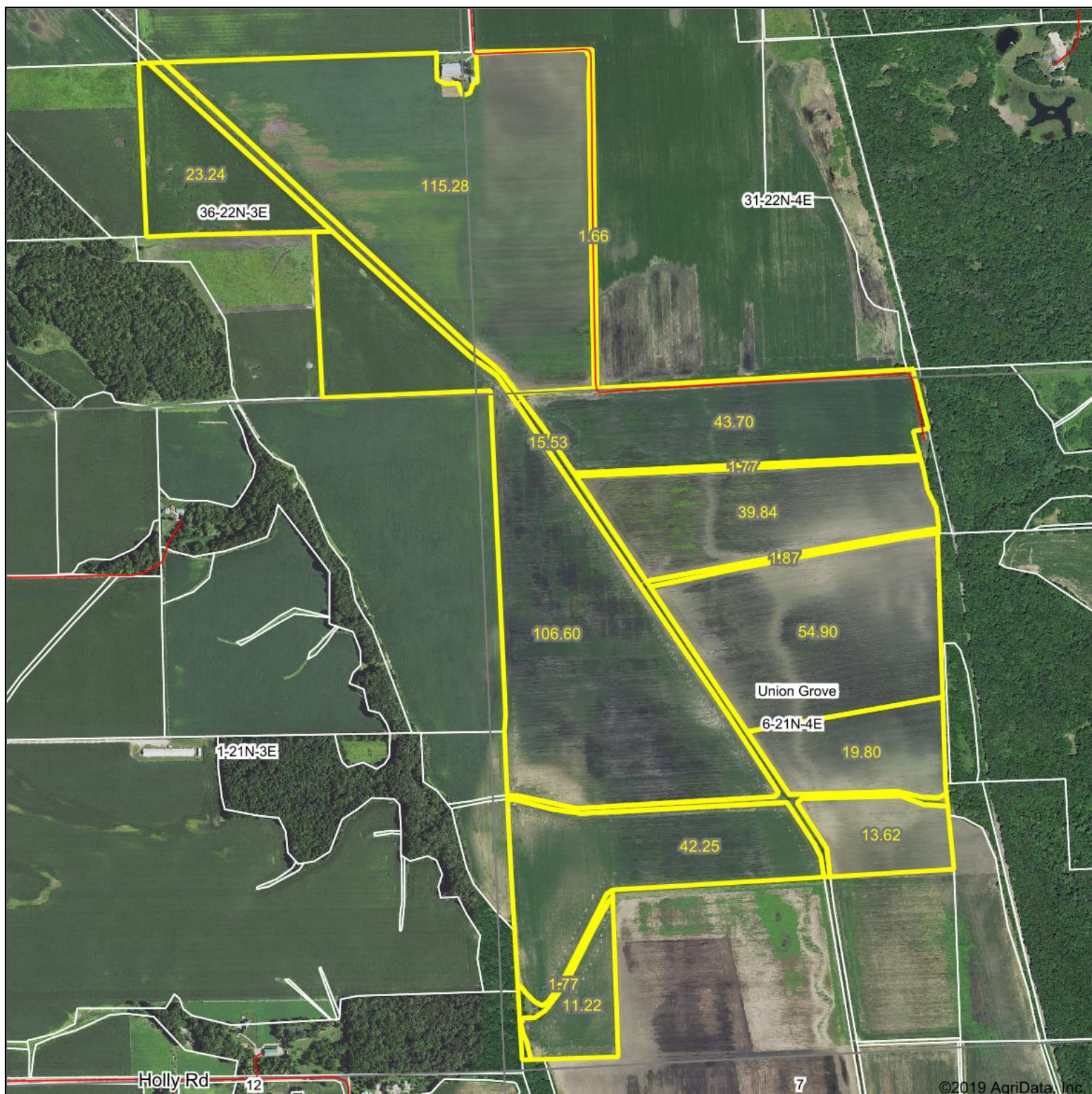


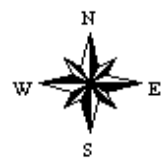
Aerial Map - Total Acres per Whiteside Co. FSA



Map Center: 41° 50' 25.62, -90° 5' 27.12

0ft 1201ft 2402ft

6-21N-4E
Whiteside County
Illinois



7/17/2019

Maps Provided By:
 **surety**
CUSTOMIZED ONLINE MAPPING
© AgriData, Inc. 2019 www.AgriDataInc.com

Field borders provided by Farm Service Agency as of 5/21/2008. Soils data provided by University of Illinois at Champaign-Urbana.