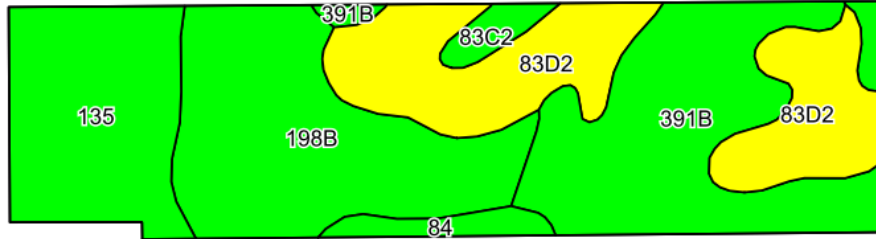
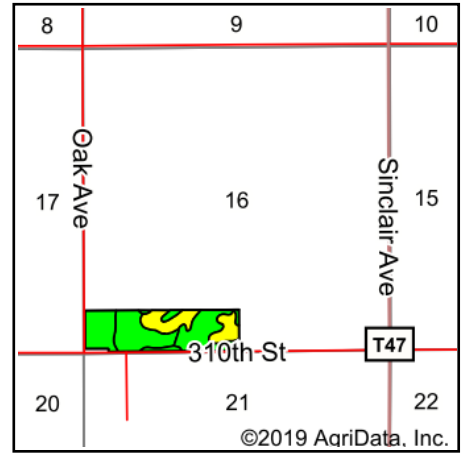


# Soils Map



©2019 AgriData, Inc.

Soils data provided by USDA and NRCS.



State: **Iowa**  
 County: **Butler**  
 Location: **21-90N-16W**  
 Township: **Albion**  
 Acres: **42.87**  
 Date: **7/31/2019**



Maps Provided By:



© AgriData, Inc. 2019

www.AgriDataInc.com



Area Symbol: IA023. Soil Area Version: 24

Code	Soil Description	Acres	Percent of field	CSR2 Legend	Non-Irr Class *c	*i Corn	*i Soybeans	CSR2**	CSR	Corn	Soybeans	*n NCCPI Overall	*n NCCPI Corn	*n NCCPI Soybeans
198B	Floyd loam, 1 to 4 percent slopes	11.34	26.5%		IIw	222.4	64.5	89	75			86	86	86
391B	Clyde-Floyd complex, 1 to 4 percent slopes	11.11	25.9%		IIw	216	62.6	87	72			86	86	79
83D2	Kenyon loam, 9 to 14 percent slopes, eroded	10.16	23.7%		IIIe	176	51	61	58			64	64	56
135	Coland clay loam, 0 to 2 percent slopes	8.02	18.7%		IIw	198.4	57.5	74	80			94	94	89
83C2	Kenyon loam, 5 to 9 percent slopes, eroded	1.20	2.8%		IIIe	204.8	59.4	84	68	212	61	68	68	60
84	Clyde silty clay loam, 0 to 3 percent slopes	1.04	2.4%		IIw	224	65	88	75	193.5	56	86	86	73
<b>Weighted Average</b>						<b>204.8</b>	<b>59.4</b>	<b>78.9</b>	<b>70.9</b>	<b>10.6</b>	<b>3.1</b>	<b>*n 81.8</b>	<b>*n 81.8</b>	<b>*n 76.6</b>

\*\*IA has updated the CSR values for each county to CSR2.

\*i Yield data provided by the ISPAID Database version 8.1.1 developed by IA State University.

\*n: The aggregation method is "Weighted Average using major components"

\*c: Using Capabilities Class Dominant Condition Aggregation Method

Soils data provided by USDA and NRCS.