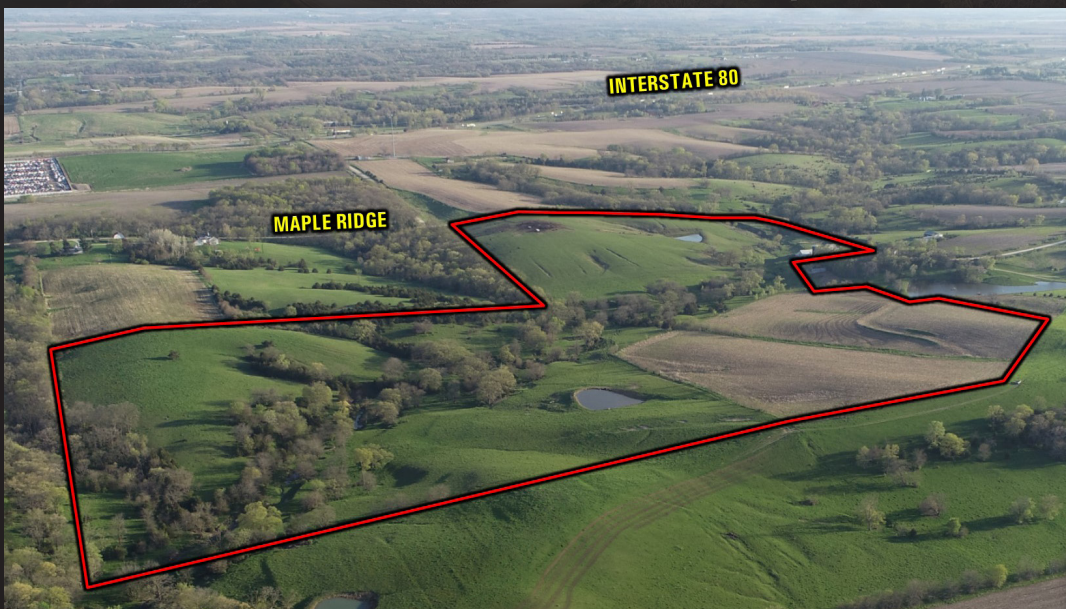


*Dallas County, Iowa*

# LAND AVAILABLE



**103.58** Acres M/L



*Keaton Dreher: 515.650.1276*  
KEATON@PEOPLES COMPANY.COM

*Kalen Ludwig: 515.402.3169*  
KALEN@PEOPLES COMPANY.COM

**PC PEOPLES**  
COMPANY  
INNOVATIVE. REAL ESTATE. SOLUTIONS.



Dallas County, Iowa

# LAND AVAILABLE

Price: \$900,000 | Price/Acre: \$8,689/ACRE | Est. Taxes: \$1,667

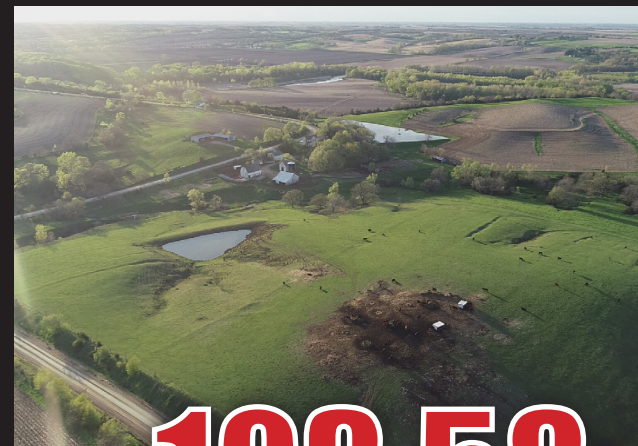
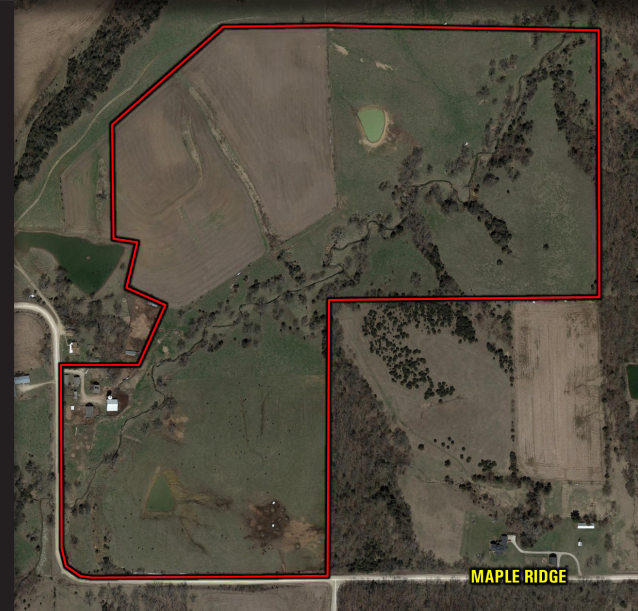
103.58 acres m/l of high-quality Dallas County pasture, tillable, recreational land, and building site. The farm offers many opportunities with two ponds as well as multiple building sites with amazing views overlooking the Dallas County countryside and Raccoon River. Farm contains high-quality pasture with good fencing in place. The farm also includes approximately 24.78 FSA tillable acres carrying a CSR2 of 39.9. Located within the Adel-De Soto-Minburn School District, and less than one mile from Highway 169 and just off of Interstate 80. Multiple barns and outbuildings are included with rural water available. This is a great opportunity to own a large building site with recreational opportunities and tillable acres less than 20 minutes from the Des Moines Metro. Seller may be willing to divide property. Additional acres may be available.

## DIRECTIONS

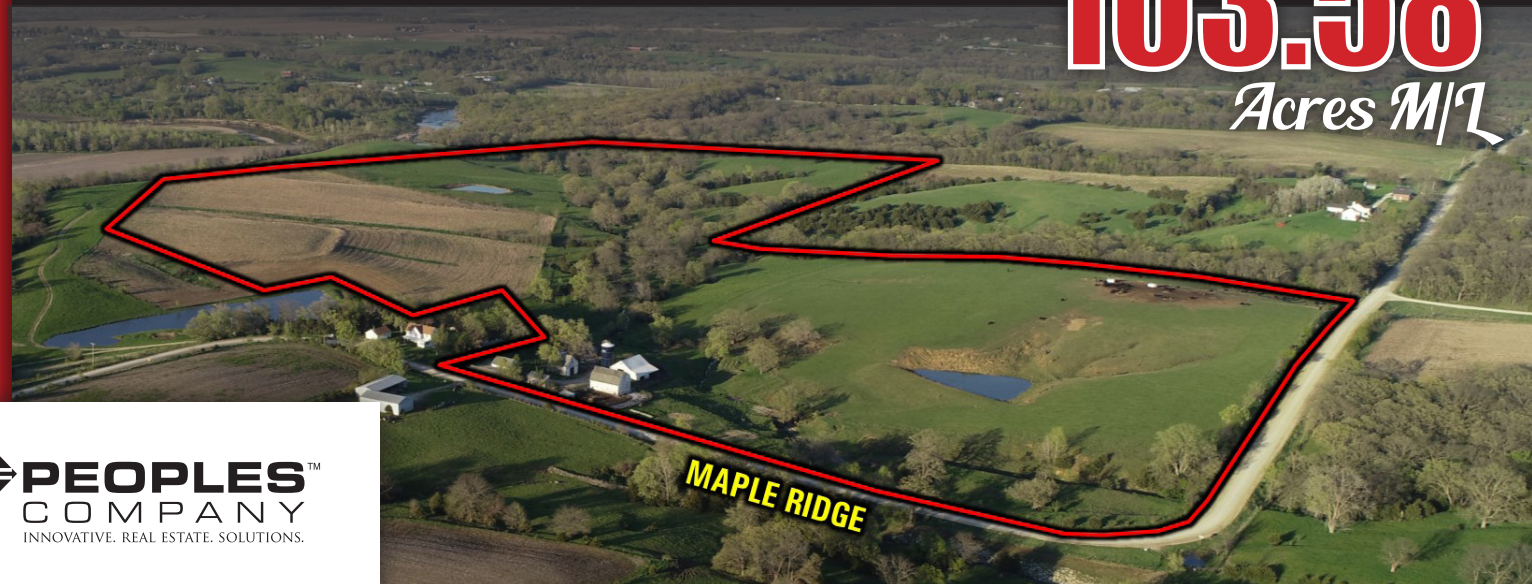
From De Soto, head north on Highway 169 approximately 1 mile. Turn west on Maple Ridge Drive and travel approximately 1 mile. Farm will be on the north and east sides of the road.

## ADDITIONAL INFO

A principal of the selling LLC holds an Iowa Real Estate license on listing.



**103.58**  
Acres M/L



For more information and photos, visit [PeoplesCompany.com](https://PeoplesCompany.com) | Listing #14755



**103.58** Acres M/L

*Dallas County, Iowa*

**LAND AVAILABLE**

**MAPLE RIDGE**

*Keaton Dreher: 515.650.1276*  
KEATON@PEOPLES COMPANY.COM

*Kalen Ludwig: 515.402.3169*  
KALEN@PEOPLES COMPANY.COM