

LAND FOR SALE

LISTING #14756

PRICE: \$98,900

DESCRIPTION: Offering 15 acres m/l of mature timber with a mobile home built in 1984 located in northern Clarke County. The property is currently used as a horse acreage with several fenced lots and a 20 x 30 horse barn with tack room. It would make an ideal hunting cabin or getaway with scenic views. If you are looking to build, the meadow behind the house is secluded and surrounded by mature trees. Deer bed down in the timber and walk through the meadow on a regular basis to get to the crop fields across the road. This property has lots of possibilities.

DIRECTIONS: From Osceola head North on Highway 69 for approximately 8.6 miles and turn right onto Pacific St. Stay on Pacific St. for approximately 4.1 miles and stay right to remain on Pacific street for 1.5 more miles. Then, turn left onto 330th Ave. stay left on 330th Ave. and the property will be on the East side of the road.

TAXES: \$880 Annually

DARAN BECKER

C: 515.979.3498

O: 515.222.1347

Daran@PeoplesCompany.com

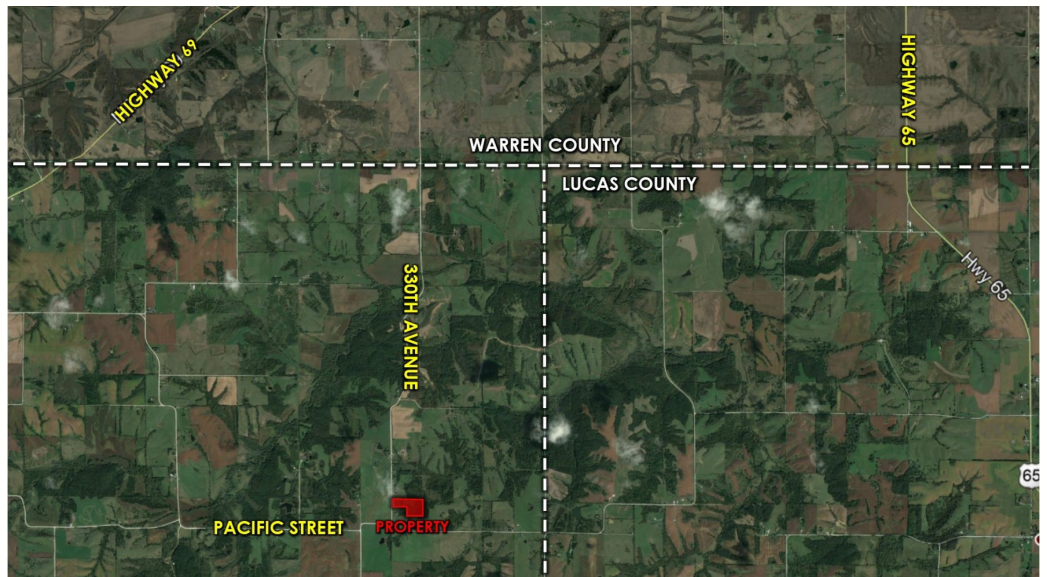
ISAAC TABER

C: 309.335.8081

O: 515.222.1347

Isaac@PeoplesCompany.com

15 ACRES M/L CLARKE COUNTY, IOWA



PeoplesCompany.com
855.800.LAND

12119 Stratford Dr, Ste B
Clive, Iowa 50325