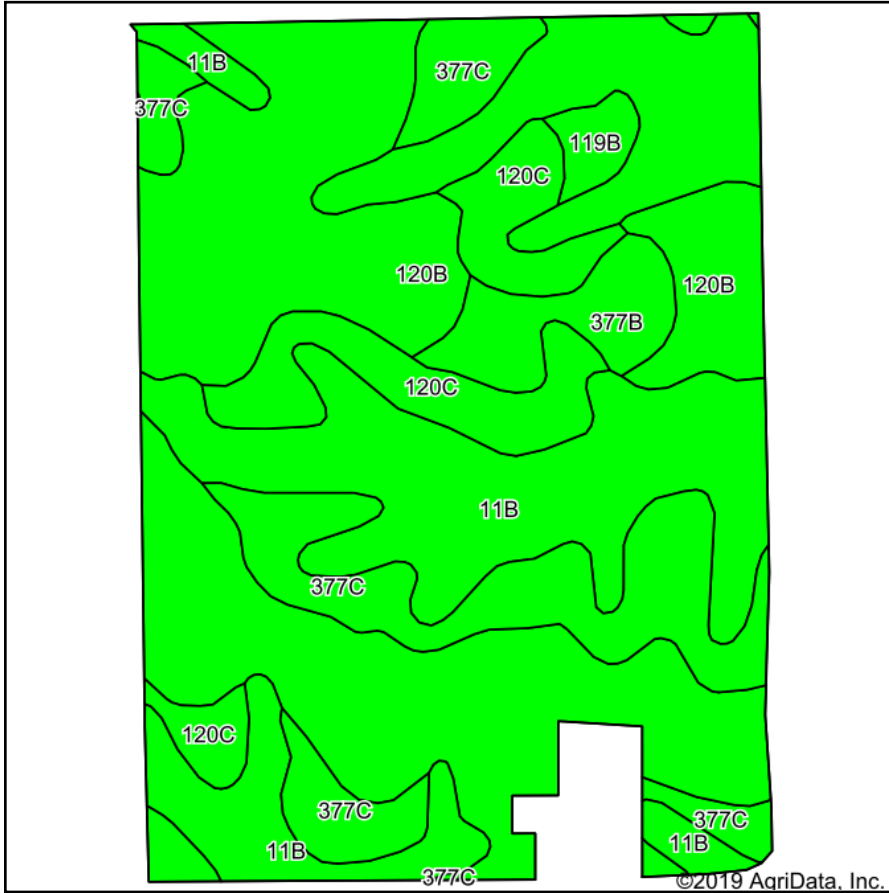
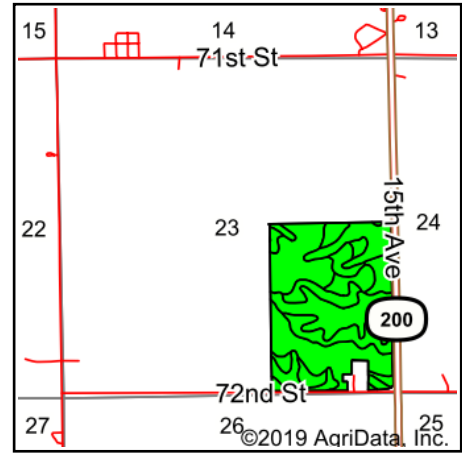


# Tillable Soils Map



Soils data provided by USDA and NRCS.



State: **Iowa**  
 County: **Benton**  
 Location: **23-83N-12W**  
 Township: **Kane**  
 Acres: **113.25**  
 Date: **11/21/2019**



Area Symbol: IA011. Soil Area Version: 22							
Code	Soil Description	Acres	Percent of field	CSR2 Legend	Non-Irr Class *c	CSR2**	CSR
120B	Tama silty clay loam, 2 to 5 percent slopes	42.84	37.8%		Ile	95	95
11B	Colo-Ely complex, 0 to 5 percent slopes	35.85	31.7%		IIw	86	68
377C	Dinsdale silty clay loam, 5 to 9 percent slopes	17.52	15.5%		IIIe	90	75
120C	Tama silty clay loam, 5 to 9 percent slopes	11.25	9.9%		IIIe	90	80
377B	Dinsdale silty clay loam, 2 to 5 percent slopes	4.43	3.9%		Ile	94	90
119B	Muscatine silty clay loam, 2 to 5 percent slopes	1.36	1.2%		Ile	95	95
<b>Weighted Average</b>						<b>90.8</b>	<b>81.7</b>

\*\*IA has updated the CSR values for each county to CSR2.

\*c: Using Capabilities Class Dominant Condition Aggregation Method  
 Soils data provided by USDA and NRCS.