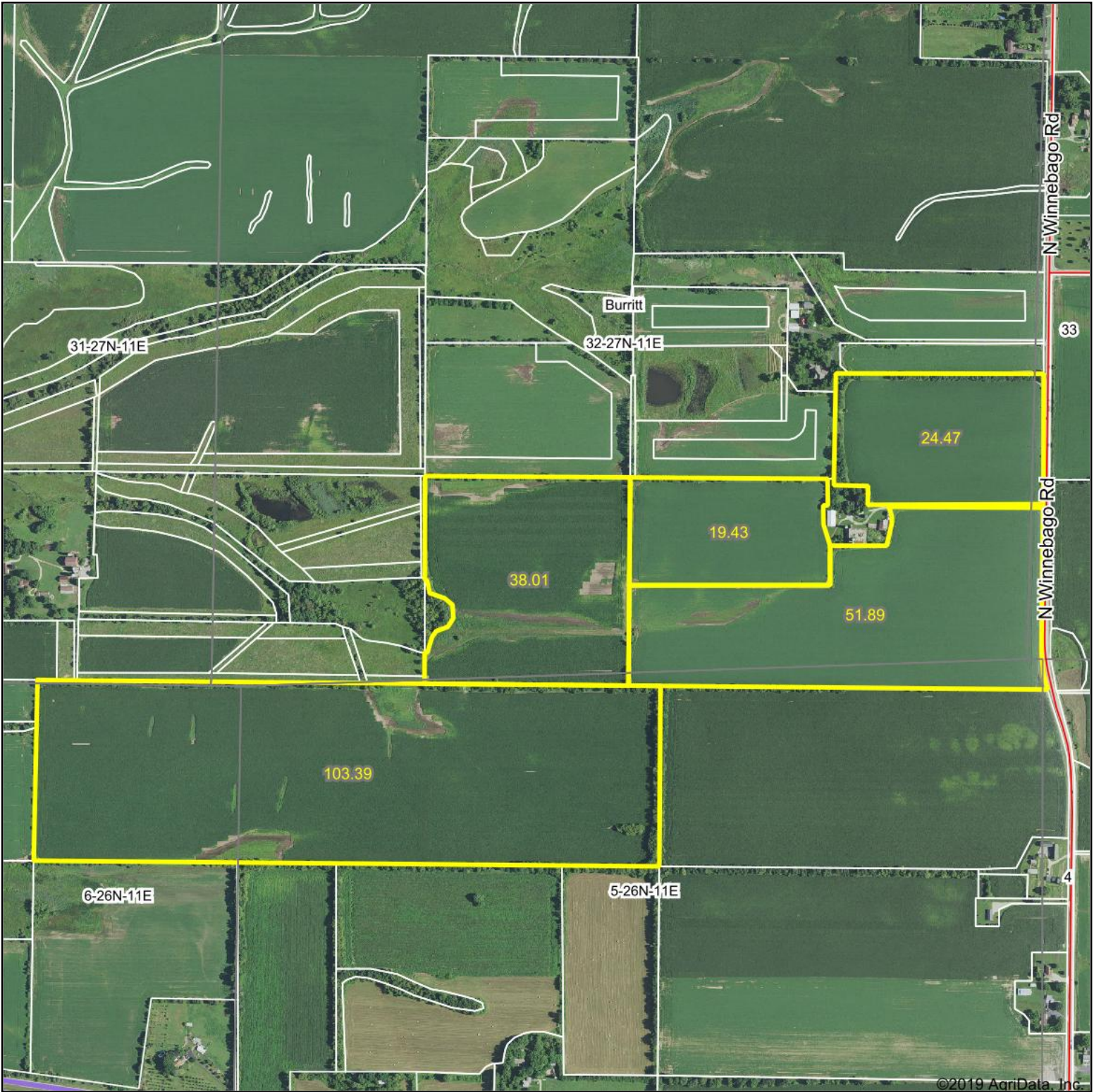


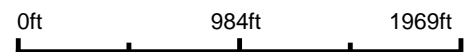
Aerial Map - Tillable Acres



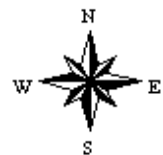
©2019 AgriData, Inc.



Map Center: 42° 17' 32.59, -89° 15' 15.34



32-27N-11E
Winnebago County
Illinois



12/2/2019

Field borders provided by Farm Service Agency as of 5/21/2008. Soils data provided by University of Illinois at Champaign-Urbana.