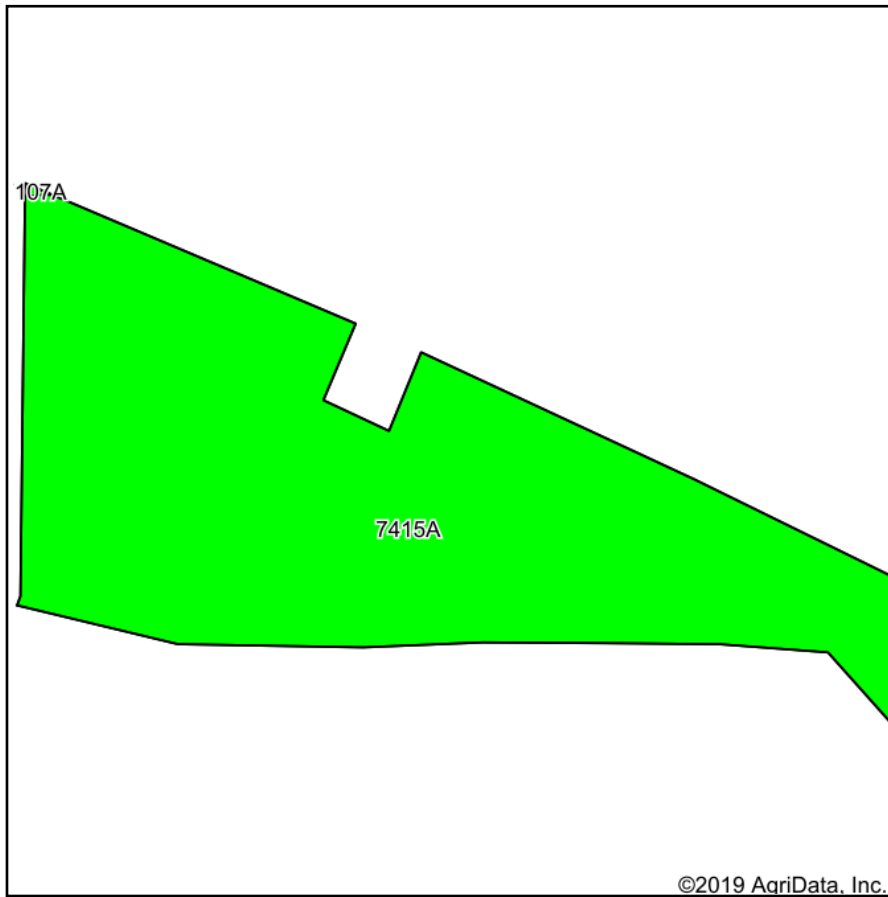
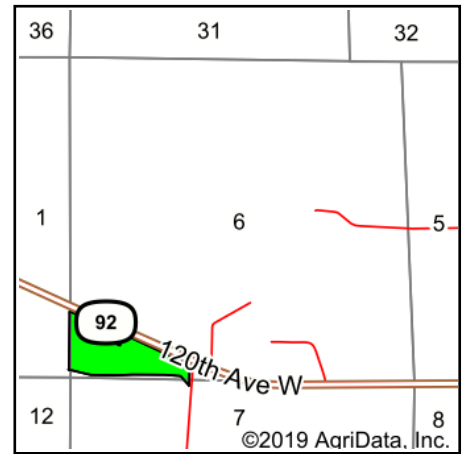


# Soils Map



Soils data provided by USDA and NRCS.



State: **Illinois**  
 County: **Rock Island**  
 Location: **6-16N-5W**  
 Township: **Drury**  
 Acres: **27.9**  
 Date: **5/8/2020**



Maps Provided By:



Area Symbol: IL161. Soil Area Version: 15								
Code	Soil Description	Acres	Percent of field	Il. State Productivity Index Legend	Corn Bu/A	Soybeans Bu/A	Wheat Bu/A	Crop productivity index for optimum management
7415A	Orion silt loam, 0 to 2 percent slopes, rarely flooded	27.90	100.0%		180	57	66	131
Weighted Average					180	57	66	131

**Table: Optimum Crop Productivity Ratings for Illinois Soil by K.R. Olson and J.M. Lang, Office of Research, ACES, University of Illinois at Champaign-Urbana.** Version: 1/2/2012 Amended Table S2 B811

Crop yields and productivity indices for optimum management (B811) are maintained at the following NRES web site: <http://soilproductivity.nres.illinois.edu/>

\*\* Indexes adjusted for slope and erosion according to Bulletin 811 Table S3

\*c: Using Capabilities Class Dominant Condition Aggregation Method

Soils data provided by USDA and NRCS. Soils data provided by University of Illinois at Champaign-Urbana.