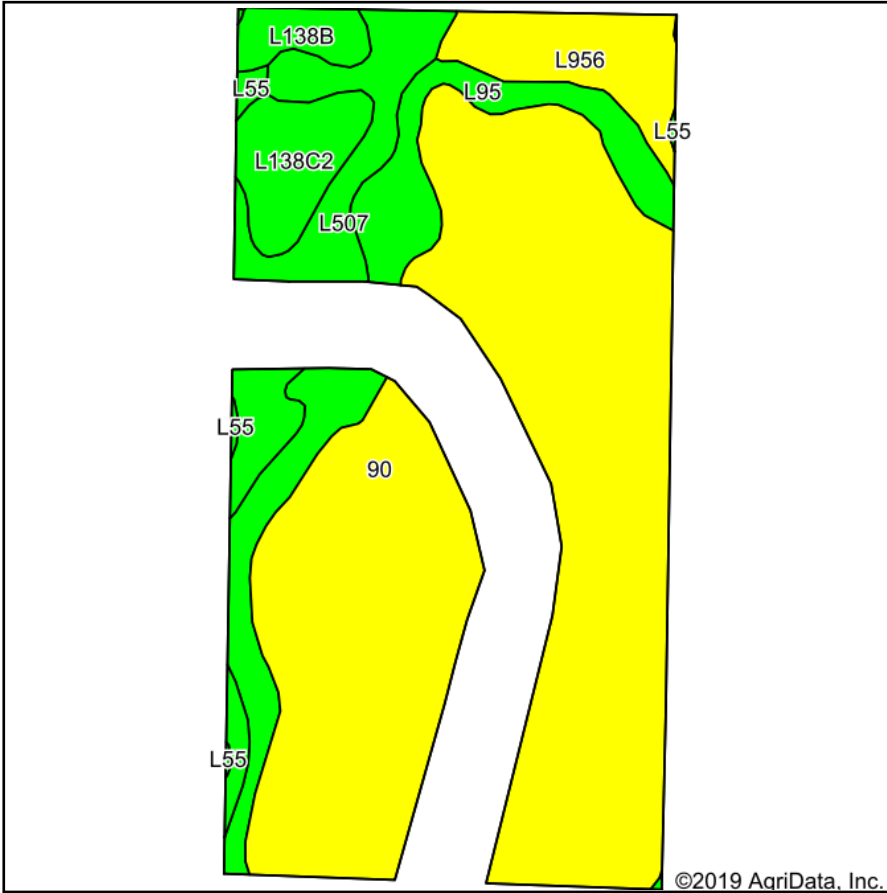
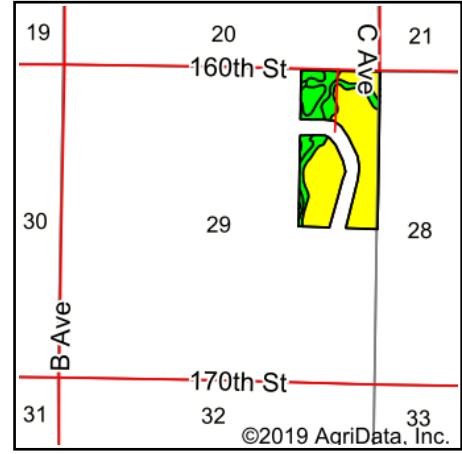


Tillable Soils Map



Soils data provided by USDA and NRCS.



State: **Iowa**
 County: **Dallas**
 Location: **29-81N-29W**
 Township: **Dallas**
 Acres: **67.03**
 Date: **12/5/2019**



Maps Provided By:



© AgriData, Inc. 2019

www.AgriDataInc.com



Area Symbol: IA049. Soil Area Version: 25									
Code	Soil Description	Acres	Percent of field	CSR2 Legend	Non-Irr Class *c	CSR2**	CSR	*n NCCPI Overall	
90	Okoboji mucky silt loam, 0 to 1 percent slopes	44.06	65.7%		IIIw	56	61	75	
L95	Harps clay loam, Bemis moraine, 0 to 2 percent slopes	7.97	11.9%		IIw	75		76	
L507	Canisteo clay loam, Bemis moraine, 0 to 2 percent slopes	6.17	9.2%		IIw	87		79	
L956	Harps-Okoboji complex, Bemis moraine, 0 to 2 percent slopes	3.98	5.9%		IIw	69		77	
L138C2	Clarion loam, Bemis moraine, 6 to 10 percent slopes, moderately eroded	3.08	4.6%		IIIe	83		60	
L138B	Clarion loam, Bemis moraine, 2 to 6 percent slopes	1.42	2.1%		IIe	88		79	
L55	Nicollet loam, 1 to 3 percent slopes	0.35	0.5%		Ie	91		83	
Weighted Average						64	*-	*n 75	

**IA has updated the CSR values for each county to CSR2.

*- CSR weighted average cannot be calculated on the current soils data, use prior data version for csr values.

*n: The aggregation method is "Weighted Average using major components"

*c: Using Capabilities Class Dominant Condition Aggregation Method

Soils data provided by USDA and NRCS.