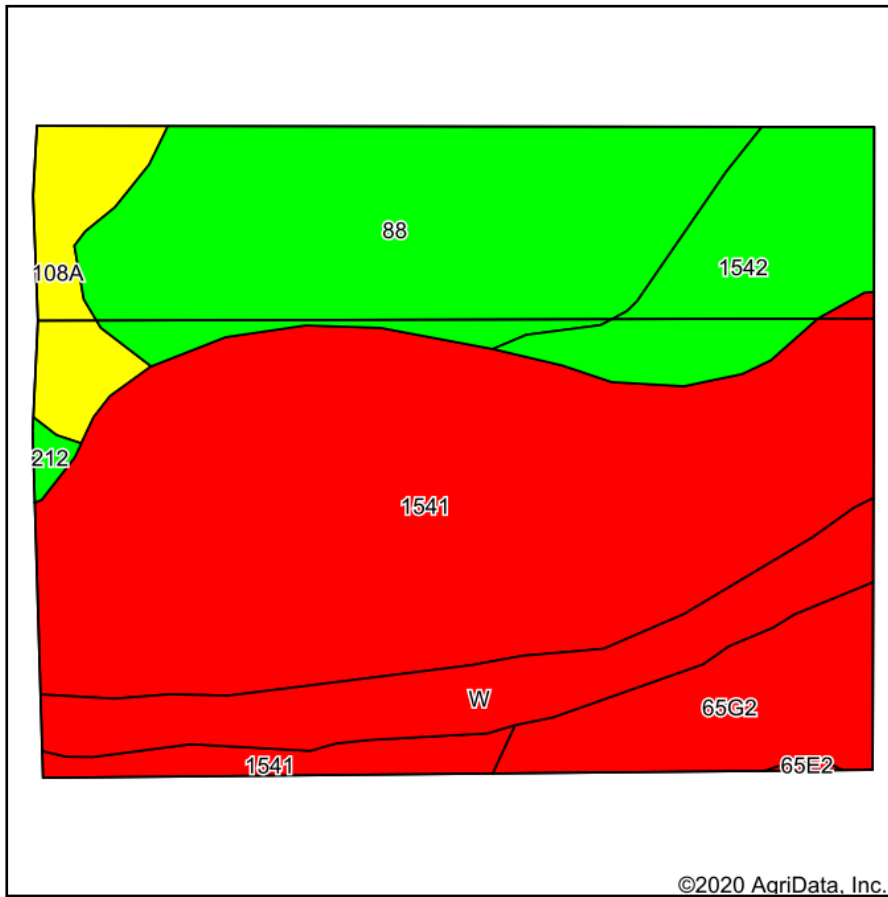
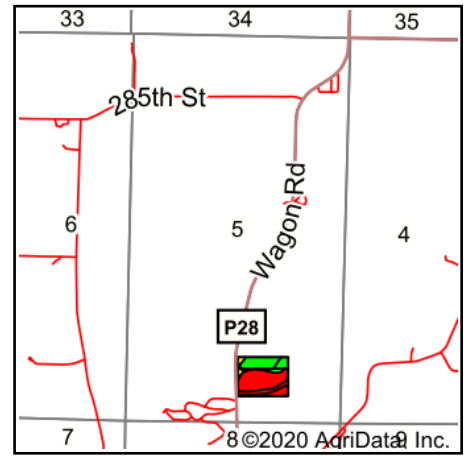


Total Soils Map



Soils data provided by USDA and NRCS.



State: **Iowa**
 County: **Guthrie**
 Location: **5-78N-30W**
 Township: **Jackson**
 Acres: **27.02**
 Date: **11/20/2020**



Maps Provided By:



Code	Soil Description	Acres	Percent of field	CSR2 Legend	Non-Irr Class *c	*i Corn	*i Soybeans	CSR2**	CSR	*n NCCPI Overall
1541	Quiver-Colo silty clay loams, 0 to 2 percent slopes, frequently flooded	12.75	47.2%		Vw			12		22
88	Nevin silty clay loam, 0 to 2 percent slopes, rarely flooded	6.04	22.4%		Iw	227.2	65.9	95	90	98
W	Water	2.54	9.4%			0	0	0	0	
1542	Quiver-Colo silty clay loams, 0 to 2 percent slopes, occasionally flooded	2.42	9.0%		Ilw			76		84
65G2	Lindley loam, 25 to 40 percent slopes, moderately eroded	1.98	7.3%		Vlle	91.2	26.4	5	5	20
108A	Wadena loam, 0 to 2 percent slopes	1.18	4.4%		Ils	80	23.2	56	55	63
212	Kennebec silt loam, 0 to 2 percent slopes, occasionally flooded	0.11	0.4%		Iw	228.8	66.4	91		95
Weighted Average						61.9	17.9	36.9	*-	*n 44.4

**IA has updated the CSR values for each county to CSR2.

*- CSR weighted average cannot be calculated on the current soils data, use prior data version for csr values.

*i Yield data provided by the ISPAID Database version 8.1.1 developed by IA State University.

*n: The aggregation method is "Weighted Average using all components"

*c: Using Capabilities Class Dominant Condition Aggregation Method

Soils data provided by USDA and NRCS.