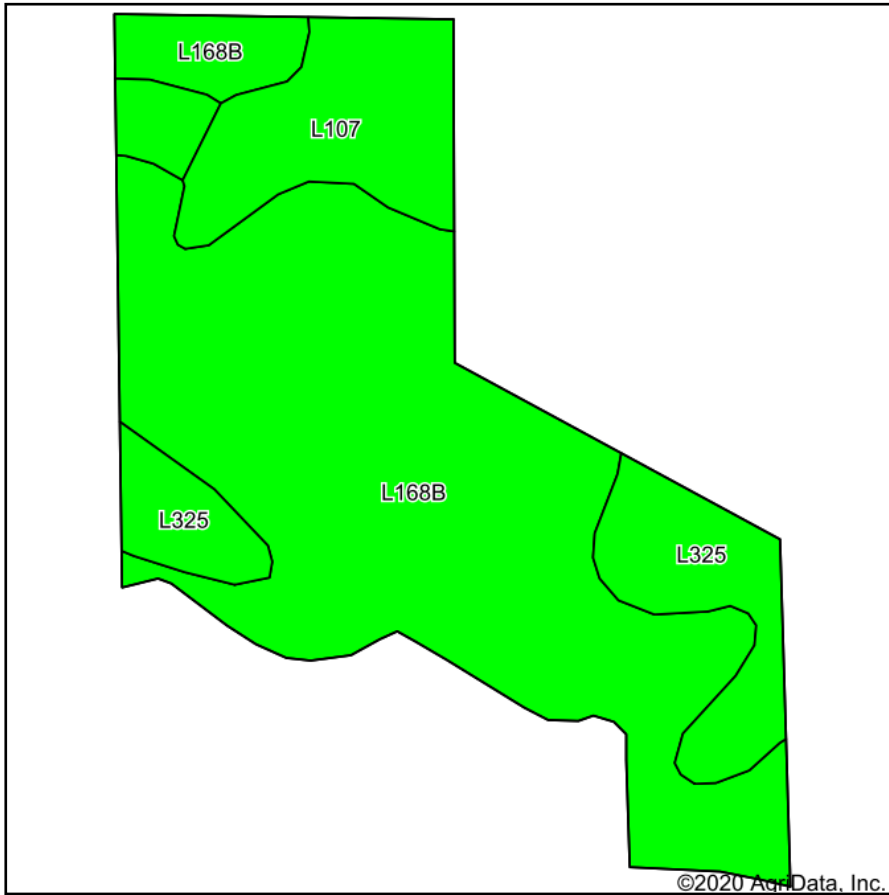
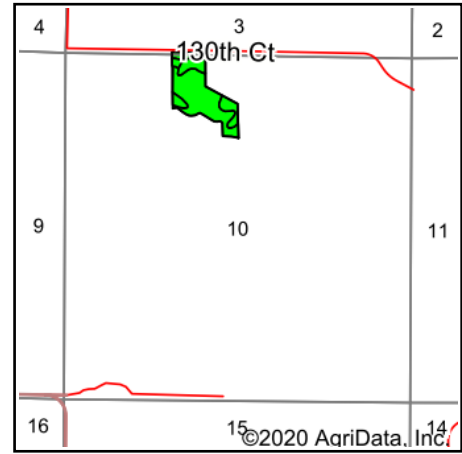


# Tillable Soils Map



Soils data provided by USDA and NRCS.



State: **Iowa**  
 County: **Dallas**  
 Location: **10-81N-26W**  
 Township: **Des Moines**  
 Acres: **16.42**  
 Date: **12/14/2020**



Maps Provided By:



Code	Soil Description	Acres	Percent of field	CSR2 Legend	Non-Irr Class *c	*i Corn	*i Soybeans	CSR2**	*n NCCPI Overall
L168B	Hayden loam, Bemis moraine, 2 to 6 percent slopes	11.55	70.3%		Ile	0	0	76	86
L325	Le Sueur loam, Bemis moraine, 1 to 3 percent slopes	2.71	16.5%		Ie	0	0	78	92
L107	Webster clay loam, Bemis moraine, 0 to 2 percent slopes	2.16	13.2%		IIw	0	0	88	84
<b>Weighted Average</b>						<b>*-</b>	<b>*-</b>	<b>77.9</b>	<b>*n 86.7</b>

\*\*IA has updated the CSR values for each county to CSR2.

\*i Yield data provided by the ISPAID Database version 8.1.1 developed by IA State University.

\*n: The aggregation method is "Weighted Average using all components"

\*c: Using Capabilities Class Dominant Condition Aggregation Method

Soils data provided by USDA and NRCS.