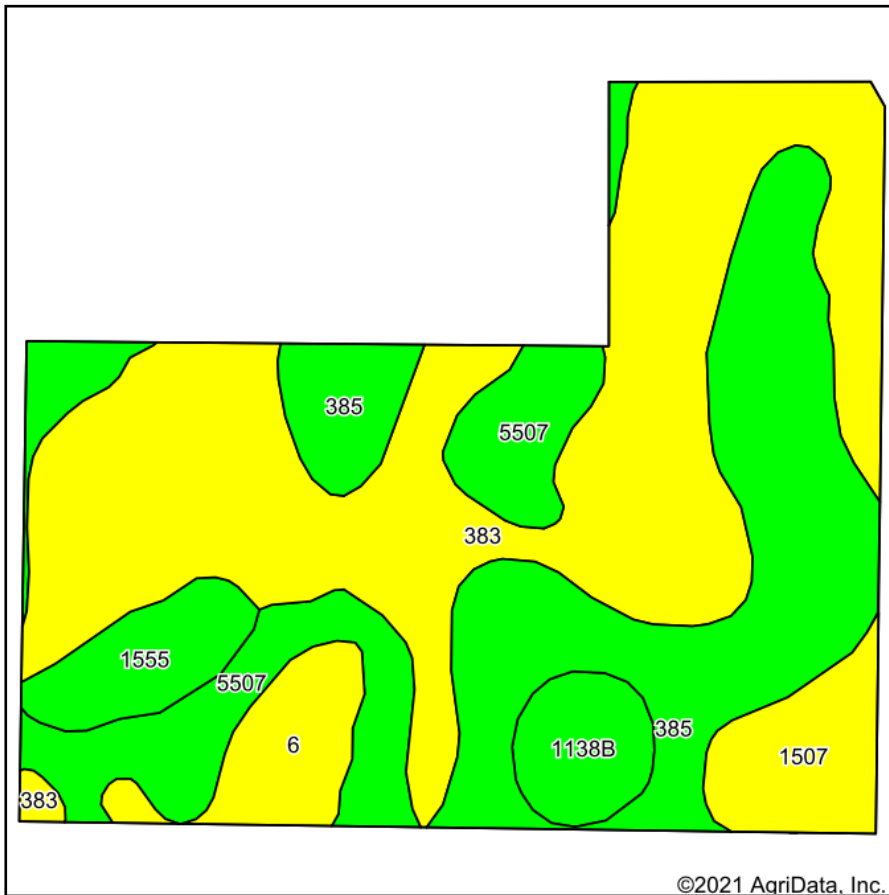
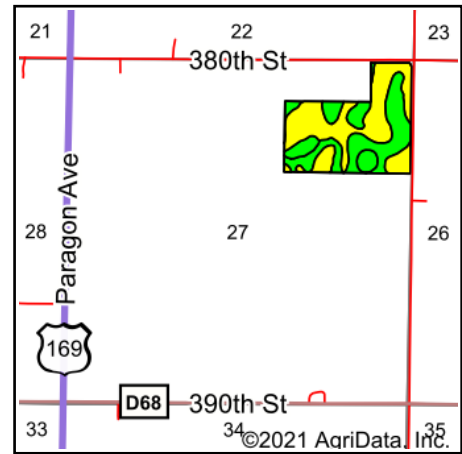


Tillable Soils Map



Soils data provided by USDA and NRCS.



State: **Iowa**
 County: **Webster**
 Location: **27-86N-28W**
 Township: **Dayton**
 Acres: **57.02**
 Date: **1/13/2021**



Maps Provided By:



Code	Soil Description	Acres	Percent of field	CSR2 Legend	Non-Irr Class *c	*i Corn	*i Soybeans	CSR2**	CSR	*n NCCPI Overall
383	Marna silty clay loam, 0 to 2 percent slopes	24.78	43.5%		Ilw	193.6	56.1	69	73	77
385	Guckeen silty clay loam, 1 to 3 percent slopes	14.75	25.9%		Ilw	220.8	64	83	87	82
5507	Corvuso-Brownnton complex, 0 to 2 percent slopes	7.60	13.3%		Ilw	206.4	59.9	72	61	62
1507	Brownnton silty clay loam, 0 to 2 percent slopes	2.86	5.0%		Ilw	177.6	51.5	62	68	65
6	Okoboji silty clay loam, 0 to 1 percent slopes	2.59	4.5%		Illw	177.6	51.5	59	62	76
1555	Nicollet-Guckeen complex, 1 to 3 percent slopes	2.37	4.2%		Ie	222.4	64.5	86	86	80
1138B	Clarion clay loam, 2 to 5 percent slopes	2.07	3.6%		Ile	225.6	65.4	90	80	80
Weighted Average						203.2	58.9	73.7	75.1	*n 75.9

**IA has updated the CSR values for each county to CSR2.

*i Yield data provided by the ISPAID Database version 8.1.1 developed by IA State University.

*n: The aggregation method is "Weighted Average using all components"

*c: Using Capabilities Class Dominant Condition Aggregation Method

Soils data provided by USDA and NRCS.