

LAND FOR SALE

LISTING #15325

PRICE: \$194,250

DESCRIPTION: Peoples Company is proud to offer 18.5 acres m/l in Southern Warren County, Iowa. This property is located just off of the Highway R57 pavement in between Indianola and New Virginia. An ideal spot to build with scenic views and the opportunity for recreation, this one has a little something that everyone is sure to appreciate. This small hobby farm has access from both R57 and Quebec St. Rural water and electric are available along the west end of the property for those who would want to build. Whitetail hunting on this property is sneaky good, with multiple stand options and locations for food plots on over 8 tillable acres. This one is definitely worth considering!

DIRECTIONS: From Indianola, Iowa, head West on Highway 92 for 4.5 miles. Turn left onto R57 Highway and head South for 2.3 Miles. Turn right and continue onto R57 Highway for 5.5 miles. The property will be situated on the East side of R57 at the corner of R57 and Quebec St.

TAXES: \$382 Annually

JAKE SICKELS

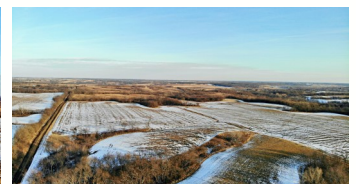
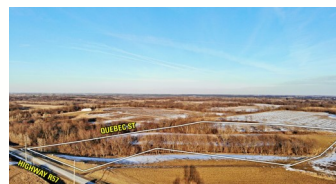
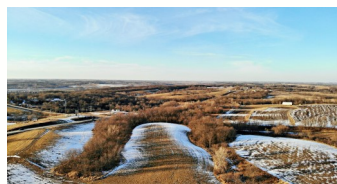
C: 515.681.2103
O: 515.222.1347
Jake@PeoplesCompany.com

JOHN HUTCHCROFT

C: 515.321.5970
O: 515.222.1347
JohnH@PeoplesCompany.com

18.50 ACRES M/L

WARREN COUNTY, IOWA



PeoplesCompany.com
855.800.LAND

12119 Stratford Dr, Ste B
Clive, Iowa 50325