



1,042

ACRES M/L AVAILABLE

**RILEY SIEREN**

319.591.0111 | [Riley@PeoplesCompany.com](mailto:Riley@PeoplesCompany.com)



**ANDREW ZELLMER**

712.898.5913 | [AndrewZ@PeoplesCompany.com](mailto:AndrewZ@PeoplesCompany.com)

DAVIS COUNTY

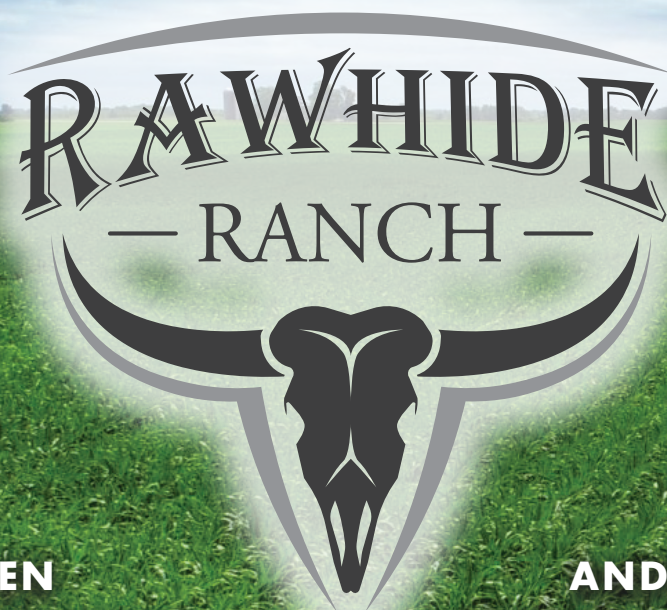




Peoples Company is pleased to present the Rawhide Ranch. With over 1,042 acres m/l and 910.77 cropland acres this gently rolling, wide open farm is the perfect piece to add to your portfolio. Not often does a farm of this caliber and magnitude come to the open market. It takes many years of hard work and dedication to piece together a property of 1000+ contiguous acres in the heartland of Iowa for crop production. The soil tests and yield maps provide data that Rawhide Ranch will produce for you.

Established manure easements from the hog buildings on the property create extra soil structure and fertility across the farm. The current owner is willing to lease back for future farming rights. The balance of the property is also creating income with a year to year hunting lease in place.

Contact the listing agents Riley Sieren and Andrew Zellmer for more information on this one of a kind property.



**RILEY SIEREN**

319.591.0111 | Riley@PeoplesCompany.com

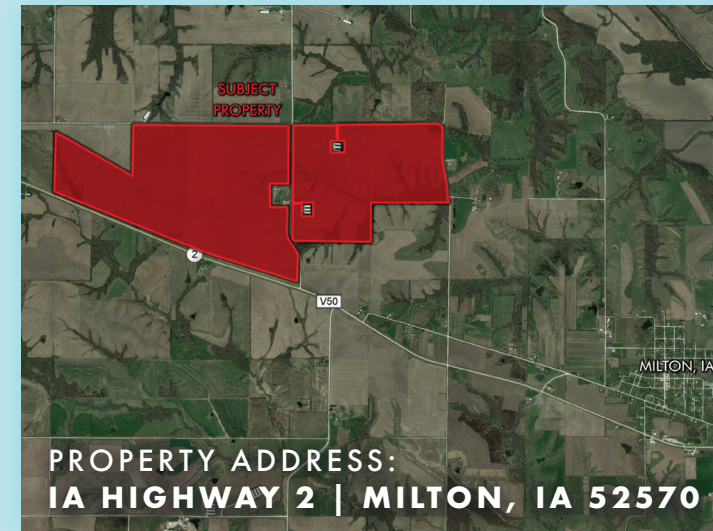
**ANDREW ZELLMER**

712.898.5913 | AndrewZ@PeoplesCompany.com

DAVIS COUNTY

1  
0  
4  
2

ACRES  
M / L



## DIRECTIONS TO PROPERTY

**From Milton, IA** travel west on IA Highway 2 for approximately 3 miles. Property will be located on the north side of the highway. Look for signs.

**From Pulaski, IA** travel east out of town on IA Highway 2 for approximately 2 miles. Property will be located on the north side of the highway. Look for signs.



TO THE RIGHT IS A QUICK RESPONSE (QR) CODE. TO ACCESS:



- 1) Open up the camera on your smart phone.
- 2) Hover over the image.
- 3) Click on the link at the top of your screen.

**You are now viewing the listing on PeoplesCompany.com**







12119 Stratford Drive, Suite B  
Clive, IA 50325  
[PeoplesCompany.com](http://PeoplesCompany.com)



## LISTING #15349

---

### RILEY SIEREN

319.591.0111  
[Riley@PeoplesCompany.com](mailto:Riley@PeoplesCompany.com)

---

### ANDREW ZELLMER

712.898.5913  
[AndrewZ@PeoplesCompany.com](mailto:AndrewZ@PeoplesCompany.com)

\*All information, regardless of source, is deemed reliable but not guaranteed and should be independently verified. The information may not be used for any purpose other than to identify and analyze properties and services. The data contained herein is copyrighted by Peoples Company and is protected by all applicable copyright laws. Any dissemination of this information is in violation of copyright laws and is strictly prohibited.



1,042 ACRES M/L AVAILABLE