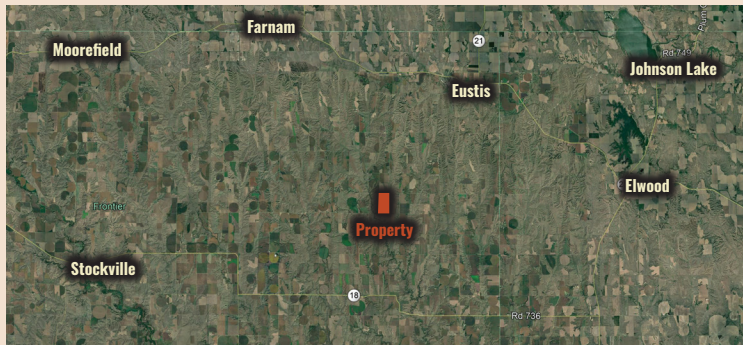


# FRONTIER COUNTY, NEBRASKA

## FARMLAND AUCTION



Peoples Company is pleased to present a total of 326.40 total acres m/l and 142.90 of FSA cropland acres located just southwest of Eustis, Nebraska. The property will be offered via Public Auction as one tract and will take place at 10:00 AM on April 15th at The Eustis Fair Building in Eustis, NE. This combination farm is located in a great farming community at the intersection of Road 742 and West Canyon Road. Don't miss your chance to own this great investment opportunity.

### DIRECTIONS

Head south from Eustis, NE on S Main St., Turn right on Road 417, and head west on W Canyon Rd for 7.2 miles until you reach Road 742 intersection. The farm is located on the southeast corner.

**THURSDAY, APRIL 15TH, 2021 AT 10:00 AM**

Eustis Fair Building | 110 E Allison Street | Eustis, NE 69028

### FARM DETAILS

**FSA Farmland Acres:** 321.07

**FSA Cropland Acres:** 142.90

**Corn:** 123.20 Base Acres with PLC Yield of 131

**Wheat:** 7.20 Base Acres with PLC Yield of 48

**Grain Sorghum:** 0.10 Base Acres with PLC Yield of 85

**Total:** 130.5 Base Acres

