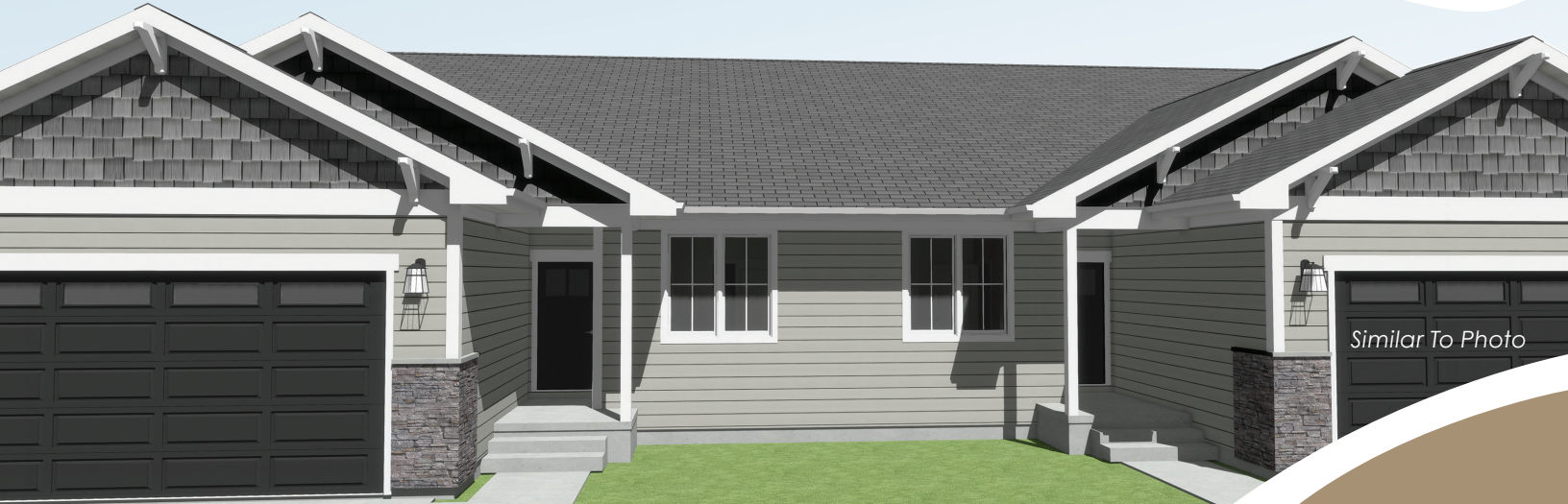


# Heritage Hills

## PLAT 10 TOWNHOMES



Similar To Photo

# Now Available

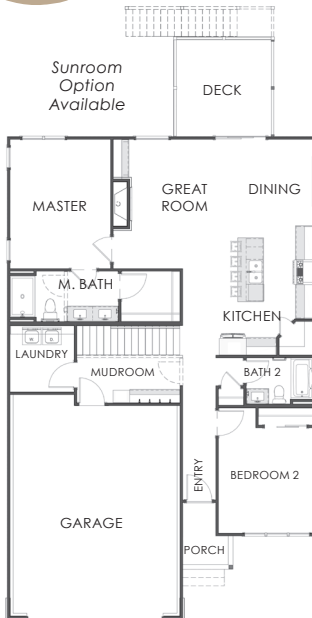
## 20 Ranch Townhomes 2 Bed/2 Bath • 2 Floor Plan Options

# GBH

Built by **GROUND BREAKER** homes

GroundBreakerHomes.com  
for more information

**New Era Plan: 1,418 SF**



**Legacy Plan: 1,467 SF**



Located on the north side of Indianola with breathtaking views of the Indianola Country Club

# Reserve your lot now!

FOR MORE INFORMATION, CONTACT:



**Kalen Ludwig 515.402.3169**  
Kalen@PeoplesCompany.com

**Keaton Dreher 515.650.1276**  
Keaton@PeoplesCompany.com



# Heritage Hills

## PLAT 10 TOWNHOMES



# GBH

Built by **GROUND BREAKER** homes

## Golf course lots available!

Please contact an agent for current pricing and options.

## Reserve your lot now!

FOR MORE INFORMATION, CONTACT:

**PEOPLES**  
COMPANY  
INNOVATIVE REAL ESTATE SOLUTIONS

**Kalen Ludwig 515.402.3169**  
Kalen@PeoplesCompany.com

**Keaton Dreher 515.650.1276**  
Keaton@PeoplesCompany.com

