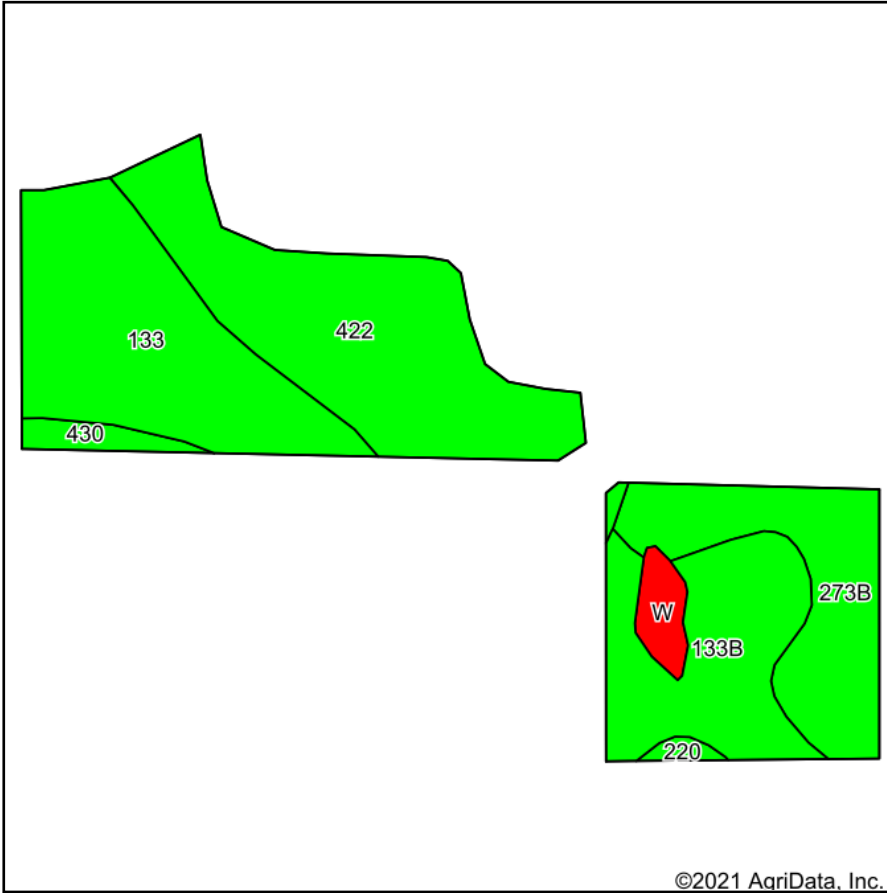
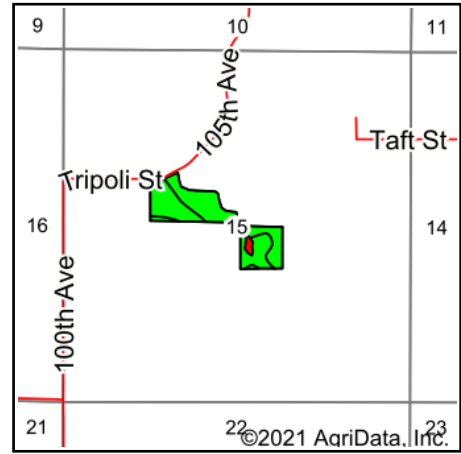


Soils Map



Soils data provided by USDA and NRCS.



State: **Iowa**
 County: **Warren**
 Location: **15-74N-24W**
 Township: **Squaw**
 Acres: **23.84**
 Date: **1/8/2021**



Maps Provided By:



Code	Soil Description	Acres	Percent of field	CSR2 Legend	Non-Irr Class *c	CSR2**	CSR
422	Amana silt loam, 0 to 2 percent slopes	7.44	31.2%		Ilw	93	85
133	Colo silty clay loam, deep loess, 0 to 2 percent slopes, occasionally flooded	6.55	27.5%		Ilw	78	80
133B	Colo silty clay loam, dissected till plain, 2 to 5 percent slopes, occasionally flooded	4.37	18.3%		Ilw	74	75
273B	Olmitz loam, 2 to 5 percent slopes	4.16	17.4%		Ile	89	72
W	Water	0.62	2.6%			0	0
430	Ackmore silt loam, 0 to 2 percent slopes, occasionally flooded	0.52	2.2%		Ilw	77	83
220	Nodaway silt loam, 0 to 2 percent slopes, occasionally flooded	0.18	0.8%		Ilw	82	
Weighted Average						81.8	*-

**IA has updated the CSR values for each county to CSR2.

*- CSR weighted average cannot be calculated on the current soils data, use prior data version for csr values.

*c: Using Capabilities Class Dominant Condition Aggregation Method

Soils data provided by USDA and NRCS.