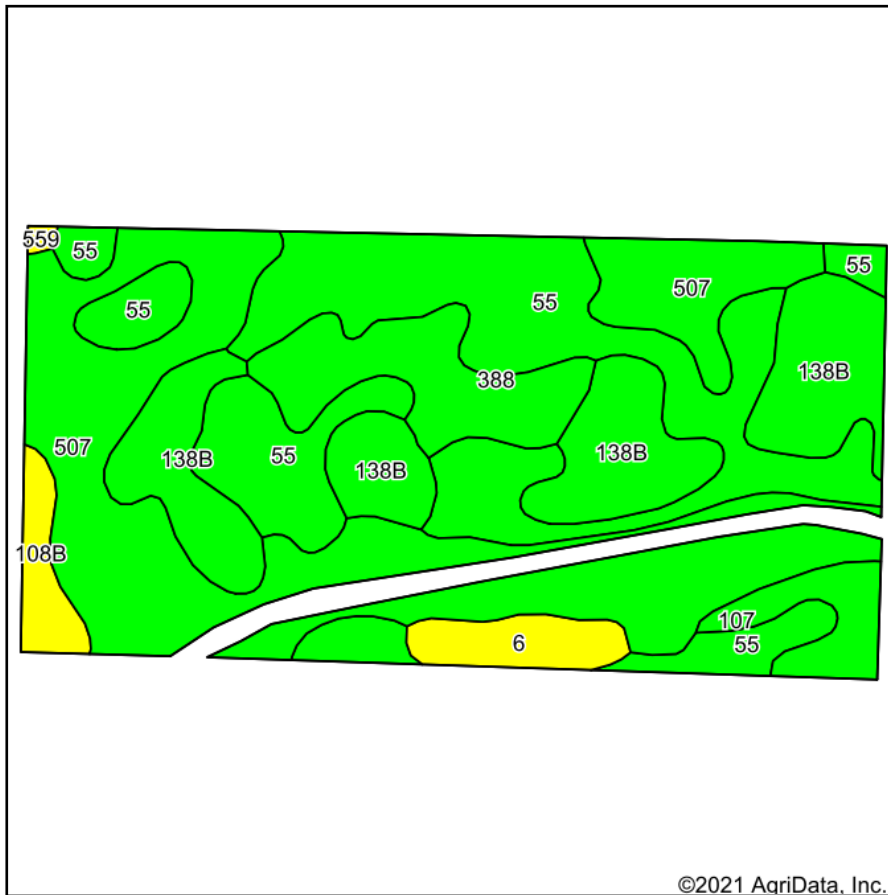
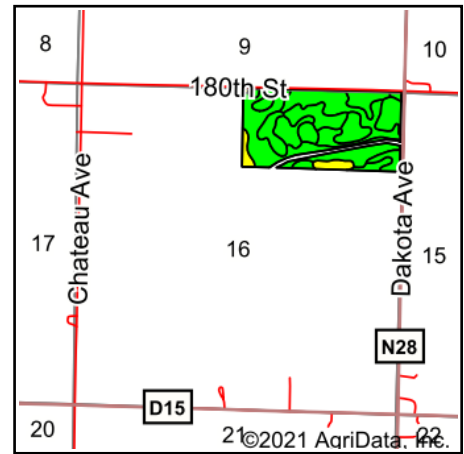


# Tillable Soils Map



Soils data provided by USDA and NRCS.

©2021 AgriData, Inc.



State: **Iowa**  
 County: **Calhoun**  
 Location: **16-89N-34W**  
 Township: **Williams**  
 Acres: **74.41**  
 Date: **5/25/2021**



Maps Provided By:



Area Symbol: IA025, Soil Area Version: 30

Code	Soil Description	Acres	Percent of field	CSR2 Legend	Non-Irr Class *c	CSR2**	CSR	*n NCCPI Overall	*n NCCPI Corn	*n NCCPI Soybeans
507	Canisteo clay loam, 0 to 2 percent slopes	24.55	33.0%		IIw	84	78	81	71	81
55	Nicollet clay loam, 1 to 3 percent slopes	24.08	32.4%		Iw	89	88	82	81	82
138B	Clarion loam, 2 to 6 percent slopes	13.86	18.6%		Ile	89	80	84	80	84
388	Kossuth silty clay loam, 0 to 2 percent slopes	5.59	7.5%		IIw	86	77	89	77	89
107	Webster clay loam, 0 to 2 percent slopes	2.34	3.1%		IIw	86	83	83	78	82
6	Okoboji silty clay loam, 0 to 1 percent slopes	2.17	2.9%		IIIw	59	57	76	74	74
108B	Wadena loam, 2 to 6 percent slopes	1.67	2.2%		Ile	52	49	63	63	52
559	Talcot clay loam, 32 to 40 inches to sand and gravel, 0 to 2 percent slopes	0.15	0.2%		IIw	54	70	66	65	56
Weighted Average						85.3	80.4	*n 82	*n 76.5	*n 81.6

\*\*IA has updated the CSR values for each county to CSR2.

\*n: The aggregation method is "Weighted Average using all components"

\*c: Using Capabilities Class Dominant Condition Aggregation Method

Soils data provided by USDA and NRCS.