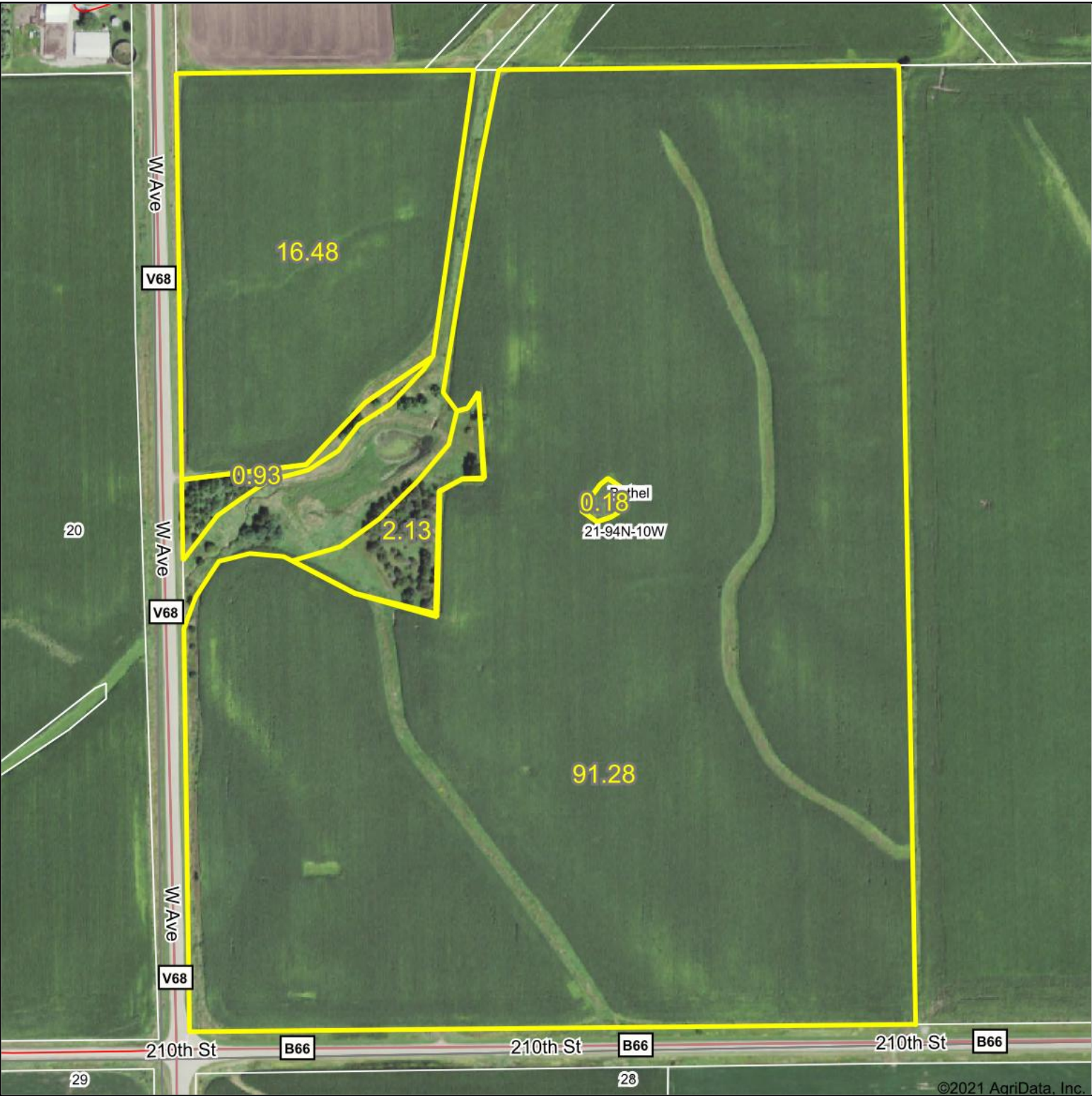



Aerial Map - Estimated Tillable Acres



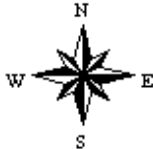


PEOPLES[™]
COMPANY
INNOVATIVE. REAL ESTATE. SOLUTIONS.

Map Center: 42° 56' 22.18, -92° 2' 18.7


21-94N-10W
Fayette County
Iowa

0ft 420ft 841ft



7/13/2021

Maps Provided By:



surety[®]
CUSTOMIZED ONLINE MAPPING

© AgriData, Inc. 2021 www.AgriDataInc.com

Field borders provided by Farm Service Agency as of 5/21/2008.