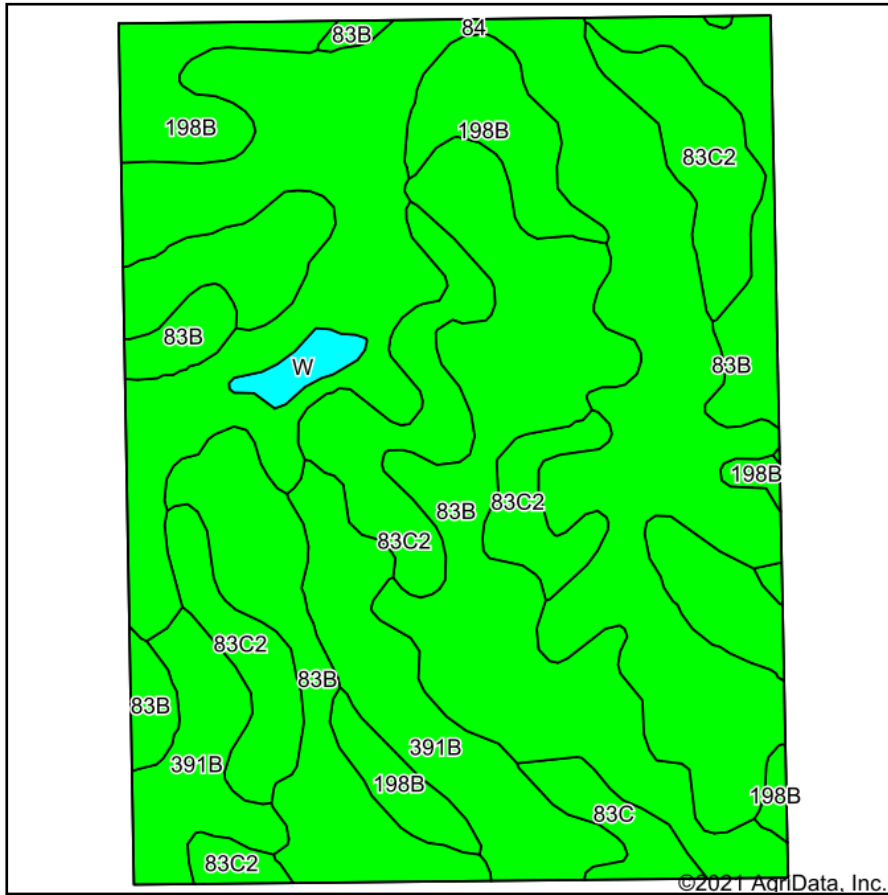
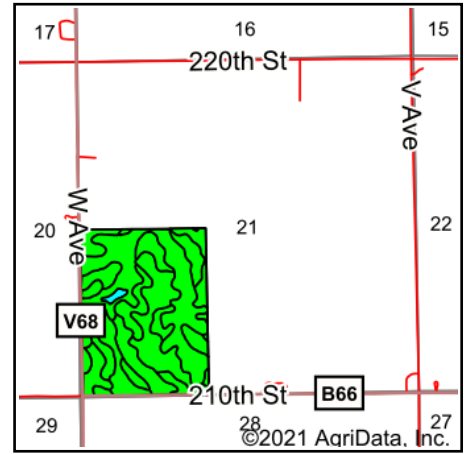


Soils Map - Est. Total Acres



Soils data provided by USDA and NRCS.



State: **Iowa**
 County: **Fayette**
 Location: **21-94N-10W**
 Township: **Bethel**
 Acres: **120**
 Date: **7/12/2021**

PC PEOPLES
 COMPANY
 INNOVATIVE. REAL ESTATE. SOLUTIONS.

Maps Provided By:

surety
 CUSTOMIZED ONLINE MAPPING
 © AgriData, Inc. 2021 www.AgriDataInc.com



Area Symbol: IA065, Soil Area Version: 25

Code	Soil Description	Acres	Percent of field	CSR2 Legend	Non-Irr Class *c	*i Corn	*i Alfalfa	*i Soybeans	CSR2**	Corn	Oats	Soybeans	*n NCCPI Corn	*n NCCPI Soybeans
84	Clyde clay loam, 0 to 3 percent slopes	38.25	31.9%		llw	224	4.7	65	88				90	85
83B	Kenyon loam, 2 to 5 percent slopes	36.13	30.1%		lle	225.6	6.3	65.4	90	210	91	61	90	78
83C2	Kenyon loam, 5 to 9 percent slopes, eroded	16.42	13.7%		llle	204.8	5.7	59.4	84	212	88	61	83	66
198B	Floyd loam, 1 to 4 percent slopes	13.83	11.5%		llw	222.4	5.8	64.5	89				81	85
391B	Clyde-Floyd complex, 1 to 4 percent slopes	12.41	10.3%		llw	216	4.5	62.6	87				86	85
83C	Kenyon loam, 5 to 9 percent slopes	1.94	1.6%		llle	209.6	5.9	60.8	85	188	90.5	48.5	89	76
W	Water	1.02	0.8%			0	0	0	0					
Weighted Average						218.7	5.4	63.4	87.3	95.3	40.9	27.5	*n 86.8	*n 79.4

**IA has updated the CSR values for each county to CSR2.

*i Yield data provided by the ISPAID Database version 8.1.1 developed by IA State University.

*n: The aggregation method is "Weighted Average using all components"

*c: Using Capabilities Class Dominant Condition Aggregation Method

Soils data provided by USDA and NRCS.