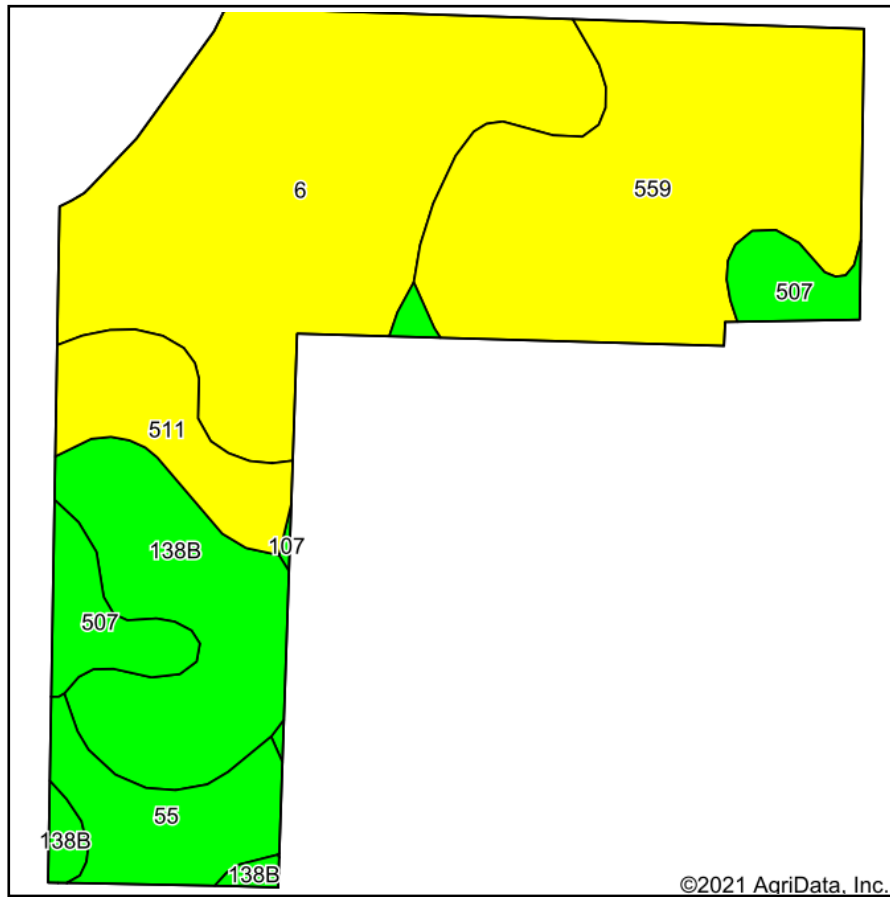
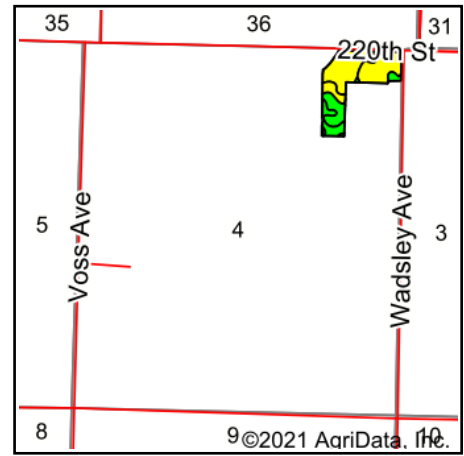


# Soils Map



Soils data provided by USDA and NRCS.



State: **Iowa**  
 County: **Sac**  
 Location: **4-88N-35W**  
 Township: **Cedar**  
 Acres: **22.04**  
 Date: **8/4/2021**

**PC PEOPLES**  
 COMPANY  
 INNOVATIVE. REAL ESTATE. SOLUTIONS.

Maps Provided By:

**surety**  
 CUSTOMIZED ONLINE MAPPING  
 © AgriData, Inc. 2021 www.AgriDataInc.com



Area Symbol: IA161, Soil Area Version: 28

Code	Soil Description	Acres	Percent of field	CSR2 Legend	Non-Irr Class *c	CSR2**	CSR	*n NCCPI Overall
6	Okoboji silty clay loam, 0 to 1 percent slopes	7.96	36.1%		IIIw	59	55	76
559	Talcot clay loam, 32 to 40 inches to sand and gravel, 0 to 2 percent slopes	6.42	29.1%		IIw	54	60	65
138B	Clarion loam, 2 to 6 percent slopes	3.35	15.2%		Ile	89	77	84
511	Blue Earth mucky silt loam, 0 to 1 percent slopes	1.47	6.7%		IIIw	66	55	74
55	Nicollet clay loam, 1 to 3 percent slopes	1.44	6.5%		Iw	89	85	82
507	Canisteo clay loam, 0 to 2 percent slopes	1.40	6.4%		IIw	84	75	81
Weighted Average						66.1	63	*n 74.6

\*\*IA has updated the CSR values for each county to CSR2.

\*n: The aggregation method is "Weighted Average using all components"

\*c: Using Capabilities Class Dominant Condition Aggregation Method

Soils data provided by USDA and NRCS.