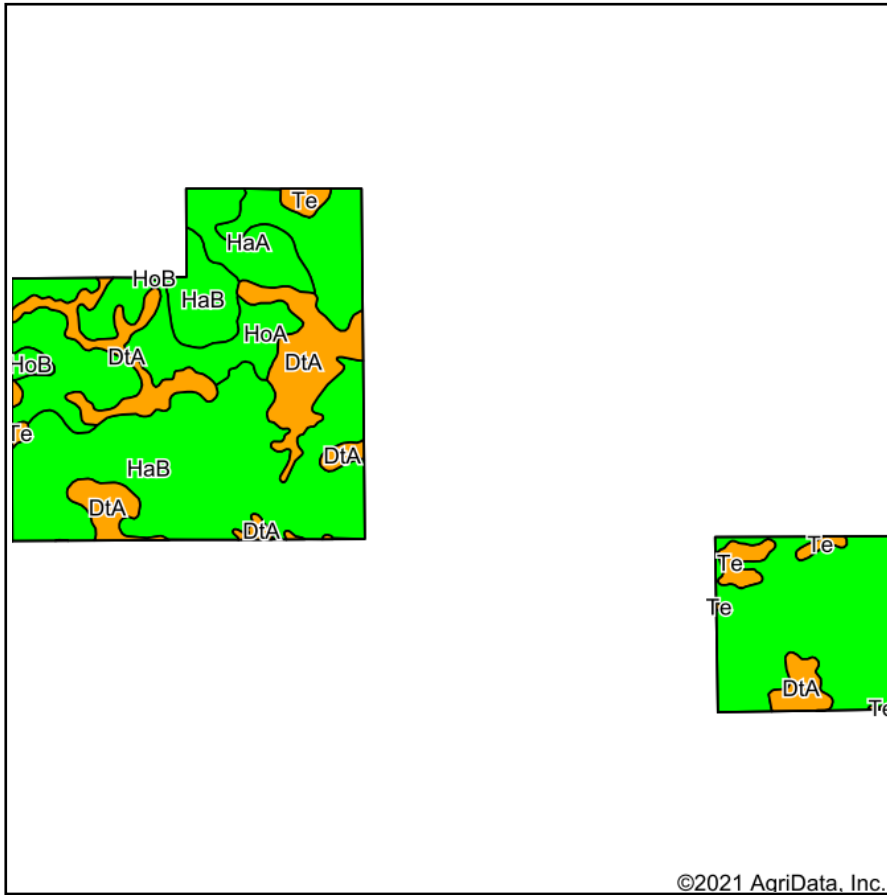
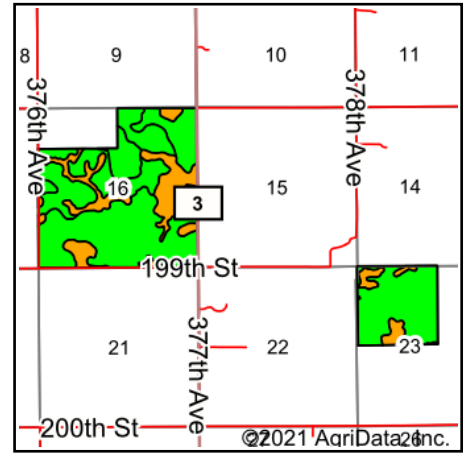


Soils Map



Soils data provided by USDA and NRCS.



State: **South Dakota**
 County: **Beadle**
 Location: **15-112N-65W**
 Township: **Whiteside**
 Acres: **720**
 Date: **8/6/2021**



Maps Provided By:



© AgriData, Inc. 2021

www.AgriDataInc.com



Area Symbol: SD005, Soil Area Version: 25

Code	Soil Description	Acres	Percent of field	PI Legend	Non-Irr Class *c	Productivity Index	*n NCCPI Overall
HaB	Hand-Bonilla loams, 3 to 6 percent slopes	435.73	60.5%		Ile	79	51
DtA	Dudley-Tetonka silt loams	114.45	15.9%		IVs	43	24
HoA	Houdek-Prosper loams, 0 to 2 percent slopes	108.59	15.1%		IIc	88	64
HaA	Hand-Bonilla loams, 0 to 3 percent slopes	35.24	4.9%		IIc	85	51
Te	Tetonka-Hoven silt loams	20.53	2.9%		IVw	48	11
HoB	Houdek-Prosper loams, 1 to 6 percent slopes	5.46	0.8%		Ile	84	63
Weighted Average						74.1	*n 47.6

*n: The aggregation method is "Weighted Average using all components"

*c: Using Capabilities Class Dominant Condition Aggregation Method

Soils data provided by USDA and NRCS.