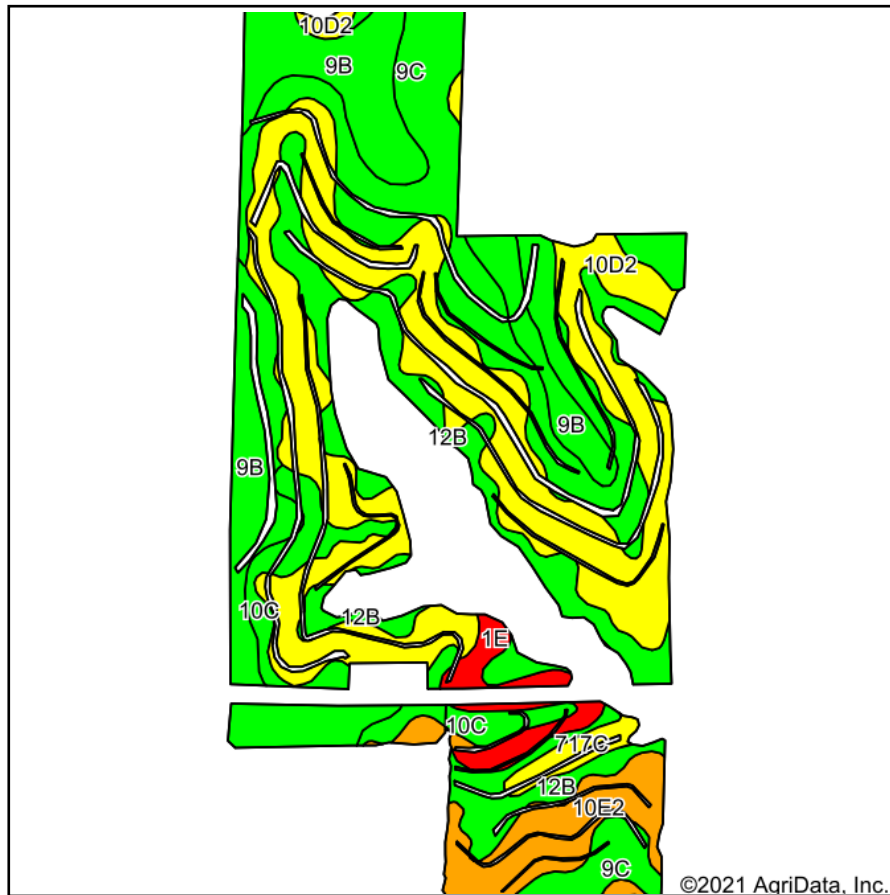
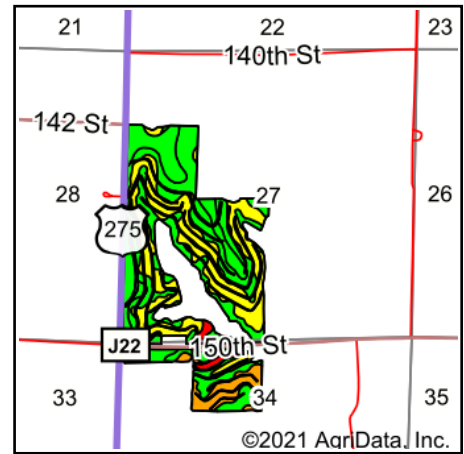


Tillable Soils Map



Soils data provided by USDA and NRCS.



State: **Iowa**
 County: **Fremont**
 Location: **34-70N-42W**
 Township: **Green**
 Acres: **181.14**
 Date: **8/20/2021**

PC PEOPLES
 COMPANY
 INNOVATIVE. REAL ESTATE. SOLUTIONS.

Maps Provided By:

surety
 CUSTOMIZED ONLINE MAPPING
 © AgriData, Inc. 2021 www.AgriDataInc.com



Area Symbol: IA071, Soil Area Version: 27

Code	Soil Description	Acres	Percent of field	CSR2 Legend	Non-Irr Class *c	Irr Class *c	*i Corn	*i Soybeans	CSR2**	CSR	*n NCCPI Overall
10D2	Monona silt loam, 9 to 14 percent slopes, eroded	55.59	30.7%		IIIe		177.6	51.5	60	53	79
9C	Marshall silty clay loam, 5 to 9 percent slopes	36.50	20.2%		IIIe		216	62.6	89	70	95
9B	Marshall silty clay loam, 2 to 5 percent slopes	34.35	19.0%		Ile		232	67.3	95	85	89
12B	Napier silt loam, 2 to 5 percent slopes	25.89	14.3%		Ile		230.4	66.8	93	77	90
10E2	Monona silt loam, 14 to 20 percent slopes, eroded	12.12	6.7%		IVe		153.6	44.5	45	43	73
10C	Monona silt loam, 5 to 9 percent slopes	9.11	5.0%		IIIe		216	62.6	89	65	89
1E	Ida silt loam, 14 to 20 percent slopes	5.26	2.9%		IVe		113.6	32.9	25	35	75
717C	Napier-Gullied land complex, 2 to 10 percent slopes	2.32	1.3%		IIIe	IVe	88	25.5	55	5	10
Weighted Average							200.5	58.1	76.6	64.7	*n 84.8

**IA has updated the CSR values for each county to CSR2.

*i Yield data provided by the ISPAID Database version 8.1.1 developed by IA State University.

*n: The aggregation method is "Weighted Average using all components"

*c: Using Capabilities Class Dominant Condition Aggregation Method

Soils data provided by USDA and NRCS.