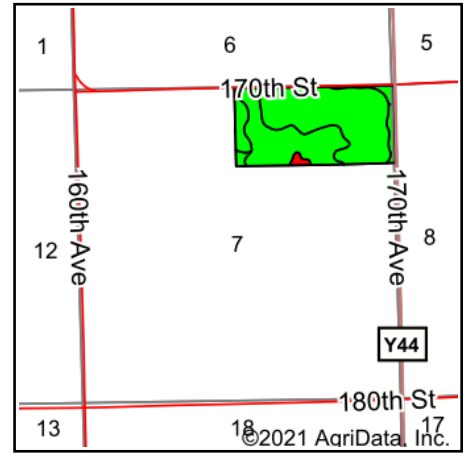
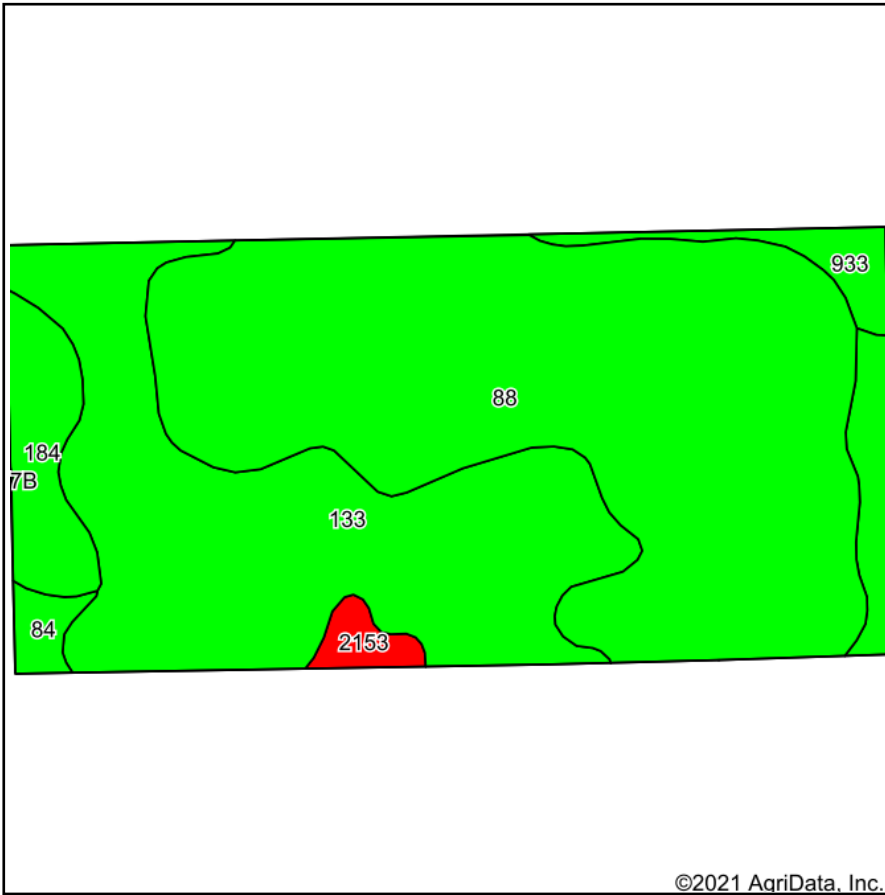


Soils Map - Total Acres



State: **Iowa**
 County: **Clinton**
 Location: **7-82N-2E**
 Township: **Grant**
 Acres: **80**
 Date: **10/12/2021**



Maps Provided By:



Soils data provided by USDA and NRCS.

©2021 AgriData, Inc.

© AgriData, Inc. 2021

www.AgriDataInc.com

Area Symbol: IA045, Soil Area Version: 26

Code	Soil Description	Acres	Percent of field	CSR2 Legend	Non-Irr Class *c	*i Corn Bu	*i Alfalfa Tons	*i Soybeans Bu	CSR2**	Corn Bu	Oats Bu	Soybeans Bu	*n NCCPI Corn	*n NCCPI Soybeans	
88	Nevin silty clay loam, 0 to 2 percent slopes	43.28	54.1%		lw	227.2	5.9	65.9	95				98	88	
133	Colo silty clay loam, 0 to 2 percent slopes, occasionally flooded	28.71	35.9%		llw	204.8	4.3	59.4	78				77	75	
184	Klinger silt loam, 1 to 4 percent slopes	4.06	5.1%		lw	240	6.2	69.6	95				89	83	
933	Sawmill silty clay loam, shallow loess, 0 to 2 percent slopes, occasionally flooded	1.89	2.4%		llw	204.8	4.3	59.4	78				77	75	
2153	Shandep clay loam, 0 to 2 percent slopes, ponded, occasionally flooded	1.06	1.3%		Vw				21				5	8	
84	Clyde silty clay loam, 0 to 3 percent slopes	1.00	1.2%		llw	224	4.7	65	88	193.5	76.5	56	90	85	
Weighted Average						1.45	216.2	5.2	62.7	87.4	2.4	1	0.7	*n 88.2	*n 81.7

**IA has updated the CSR values for each county to CSR2.

*i Yield data provided by the ISPAID Database version 8.1.1 developed by IA State University.

*n: The aggregation method is "Weighted Average using all components"

*c: Using Capabilities Class Dominant Condition Aggregation Method

Soils data provided by USDA and NRCS.