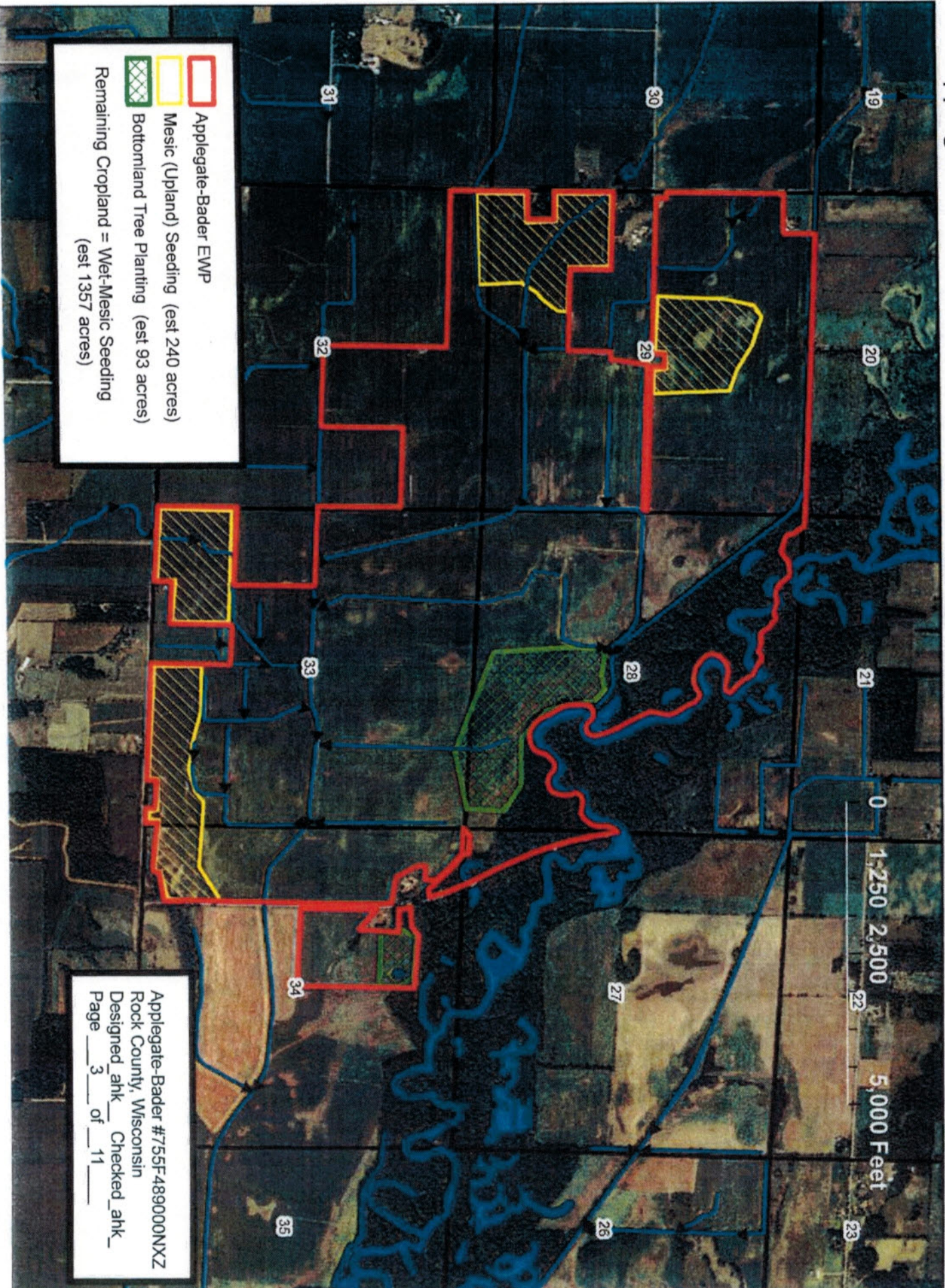


S. JING & TREE PLANTING PLANVIEW
 Applegate-Bader EWPP-FPE Rock County, WI



Applegate-Bader EWP
 Mesic (Upland) Seeding (est 240 acres)
 Bottomland Tree Planting (est 93 acres)
 Remaining Cropland = Wet-Mesic Seeding
 (est 1357 acres)

Applegate-Bader #755F489000NXZ
 Rock County, Wisconsin
 Designed_ahk_ Checked_ahk_
 Page 3 of 11

4. Packer wheels, brillion or drag system shall follow dropping of seed in working condition.

6. Woody Material Standards:

- a. Contractor shall procure specified trees and shrubs from a nursery that uses locally adapted plants (within 300 miles of the project area). Nursery stock shall be a minimum of 2 years old, and appropriately labeled as such.
- b. Seedlings shall meet the standards listed below for quality:
 - i. Minimum height: 8"
 - ii. Minimum root length: 6"
 - iii. Minimum number of lateral roots: 5
 - iv. Condition: Stiff and woody

Together, the contractor and NRCS technician shall verify documentation of minimum age and also open at least one bag of each species being planted to determine quality and count. The NRCS technician will discuss seedling quality with the contractor, and determine the need for modifying the planting plan or purchasing additional seedlings at this time. It will be the responsibility of the contractor to cull seedlings according to the above or agreed to standards during planting.

7. Approved Species List:

- a. Tree species list includes the following:

Common Name	Botanical Name	Wetland Status	Percentage of Mix	Minimum % Req'd**
River Birch	<i>Betula nigra</i>	FACW	20	10
Green Ash ***	<i>Fraxinus pennsylvanica</i>	FACW	5	0
Black Ash ***	<i>Fraxinus nigra</i>	FACW+	5	0
Red Maple	<i>Acer rubrum</i>	FAC	10	0
Hackberry	<i>Celtis occidentalis</i>	FAC-	10	5
Sycamore	<i>Platanus occidentalis</i>	FACW	15	5
Pin Oak	<i>Quercus palustris</i>	FACW	10	10
Swamp white oak	<i>Quercus bicolor</i>	FACW+	25	15
Total Percentage Trees in Mix			100%	

At established rate of 800 stems per acre, this totals 74,400 tree seedlings

** No substitutions will be allowed without written approval from the Technician. If availability of a certain species is limited, the minimum percentages shown here should be followed. If a substitution is granted, the remaining trees needed for planting should be split among the original percentages listed above. Documentation of unavailability is required prior to allowing substitution.

***Combined Ash species may not exceed 10% of the total trees planted

8. **Seedling Care:** It is the responsibility of the contractor to assure proper care of the seedlings during the planting operation. Planting will begin immediately after receiving the seedlings. Although cold storage (34°F to 40°F) is preferred, storage of seedlings in structures or shaded areas is permissible provided the planting will be completed within 3 days and the seedlings will be kept moist and cool (but not allowed to freeze). Cold storage will be necessary if the seedlings will be planted more than 3 days after their receipt. Cold storage will be for no longer than 3 weeks. It will be the responsibility of the contractor to