

GREAT RIVER CENTRE OF OTSEGO SIXTH ADDITION

G R E A T R I V E R C E N T R E O F O T S E G O

QUADAY AVENUE NE

KNOW ALL PERSONS BY THESE PRESENTS: That 21st Century Bank, a Minnesota corporation, owner of the following described property situated in the County of Wright, State of Minnesota, to wit:

Outlot A, GREAT RIVER CENTRE OF OTSEGO FIFTH ADDITION, Wright County, Minnesota.

Has caused the same to be surveyed and platted as GREAT RIVER CENTRE OF OTSEGO SIXTH ADDITION, and does hereby donate to the public for public use the drainage and utility easements as created by this plat.

In witness whereof said 21st Century Bank, a Minnesota corporation, has caused these presents to be signed by its proper officer this 24th day of October, 2019

SIGNED: 21st Century Bank

By: [Signature] as V.P.

STATE OF MINNESOTA
COUNTY OF Wright

This instrument was acknowledged before me this 24th day of October, 2019, by Jay Eull as VP of 21st Century Bank, a Minnesota corporation, on behalf of the corporation.

Tami Marie Loff (Signature)

Tami Marie Loff (Print Name)

Notary Public, Wright County, Minnesota

My Commission Expires Jan 31, 2020

I Curtiss Kallio do hereby certify that this plat was prepared by me or under my direct supervision; that I am a duly Licensed Land Surveyor in the State of Minnesota; that this plat is a correct representation of the boundary survey; that all mathematical data and labels are correctly designated on this plat; that all monuments depicted on this plat have been, or will be correctly set within one year; that all water boundaries and wet lands, as defined in Minnesota Statutes, Section 505.01, Subd. 3, as of the date of this certificate are shown and labeled on this plat; and all public ways are shown and labeled on this plat.

Dated this 17th day of October, 2019

Curtiss Kallio
Curtiss Kallio, Licensed Land Surveyor
Minnesota License No. 26909

STATE OF MINNESOTA
COUNTY OF Hennepin

The foregoing Surveyor's Certificate was acknowledged before me this 17th day of October, 2019.

by Curtiss Kallio, Land Surveyor, Minnesota License No. 26909.

[Signature] (Signature)

Amelia A. Johnson (Print Name)

Notary Public, Hennepin County, Minnesota

My Commission Expires 01/31/2024

CITY COUNCIL, CITY OF OTSEGO, MINNESOTA
This plat of GREAT RIVER CENTRE OF OTSEGO SIXTH ADDITION was approved and accepted by the City Council of the City of Otsego, Minnesota at a regular meeting thereof held this 23rd day of September, 2019, and said plat is in compliance with the provisions of Minnesota Statutes, Section 505.03, Subd. 2.

City Council, City of Otsego, Minnesota

By [Signature] Mayor By [Signature] City Clerk

WRIGHT COUNTY SURVEYOR
I hereby certify that in accordance with Minnesota Statutes, Section 505.021, Subd. 11, this plat has been reviewed and approved this 18th day of November, 2019.

[Signature]
Wright County Surveyor

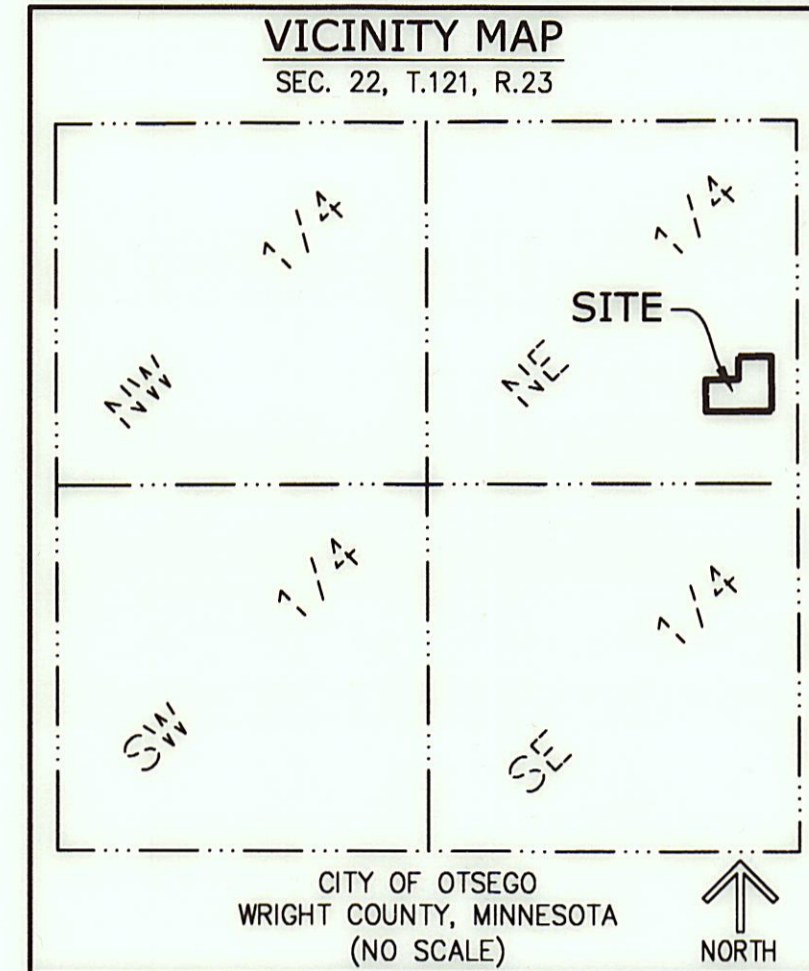
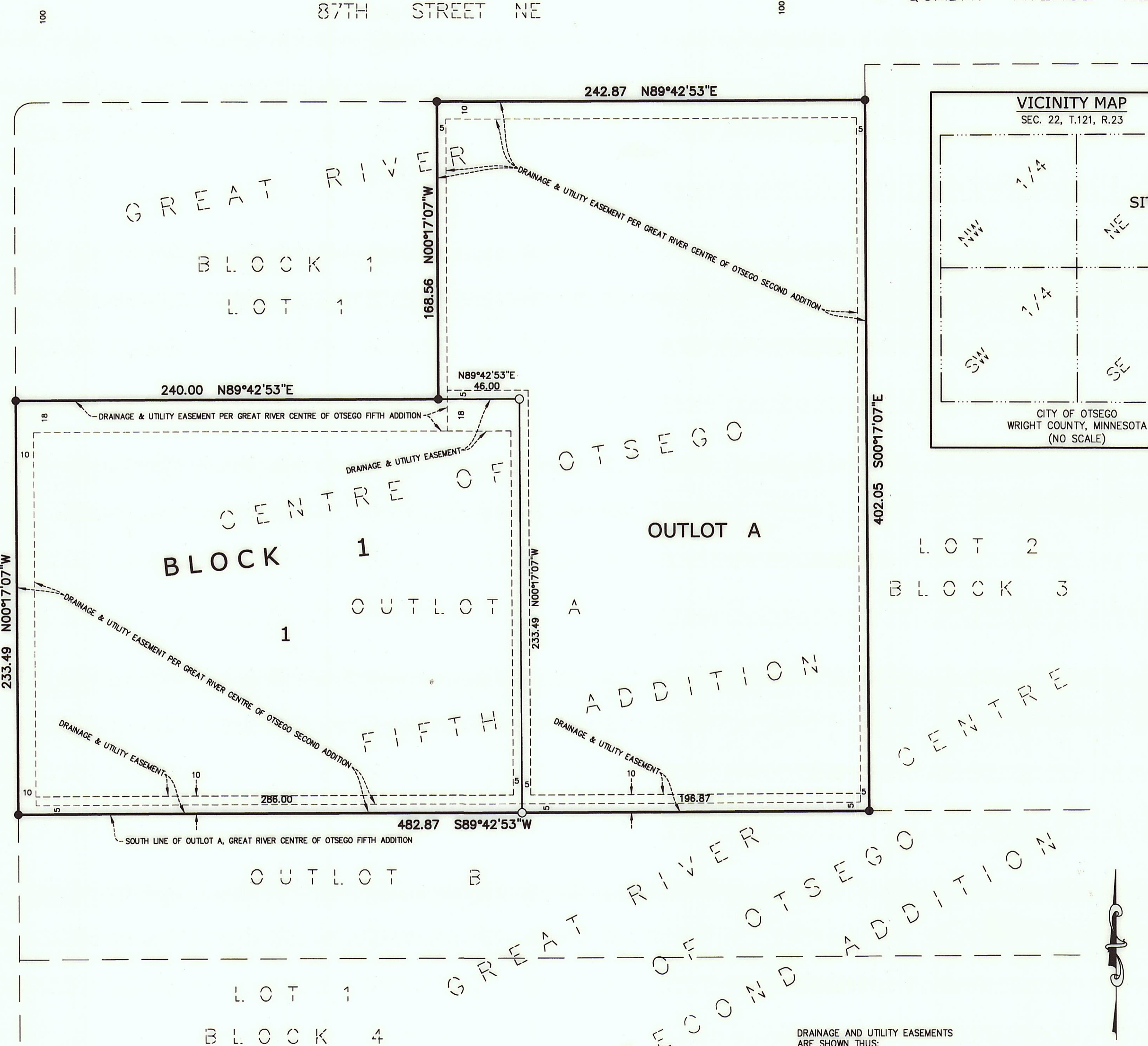
WRIGHT COUNTY AUDITOR/TREASURER
Pursuant to Minnesota Statutes, Section 505.021, Subd. 9, taxes payable for the year 2019 on the land hereinbefore described have been paid. Also, pursuant to Minnesota Statutes, Section 272.12, there are no delinquent taxes and transfer entered this 19 day of November, 2019.

[Signature]
Wright County Auditor/Treasurer

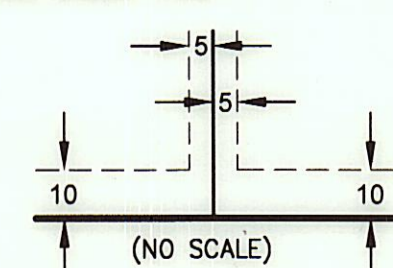
By [Signature] Deputy

WRIGHT COUNTY RECORDER
I hereby certify that this instrument was filed in the Office of the County Recorder for record on this 19th day of November, 2019 at 9:00 o'clock A. M. and was duly recorded in Cabinet No. 7, Sleeve 2333, as Document Number 1411336.

[Signature]
Wright County Recorder

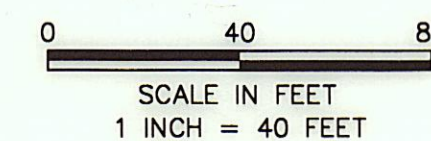


DRAINAGE AND UTILITY EASEMENTS ARE SHOWN THUS:



BEING 5 FEET IN WIDTH AND ADJOINING LOT LINES, AND BEING 10 FEET IN WIDTH AND ADJOINING RIGHT OF WAY LINES, UNLESS OTHERWISE INDICATED, AS SHOWN ON THIS PLAT.

FOR PURPOSES OF THIS PLAT, THE SOUTH LINE OF OUTLOT A, GREAT RIVER CENTRE OF OTSEGO FIFTH ADDITION IS ASSUMED TO BEAR S89°42'53\"



- DENOTES IRON MONUMENT FOUND
- DENOTES 1/2 INCH BY 14 INCH MONUMENT SET AND MARKED BY LICENSE NO. 26909