

Listing
#15907

PC PEOPLES
COMPANY
INNOVATIVE. REAL ESTATE. SOLUTIONS.

• 209.01 ACRES M/L •

Ashley County
ARKANSAS

Land Available

Joel King, ALC, CAI

Steve Bruere

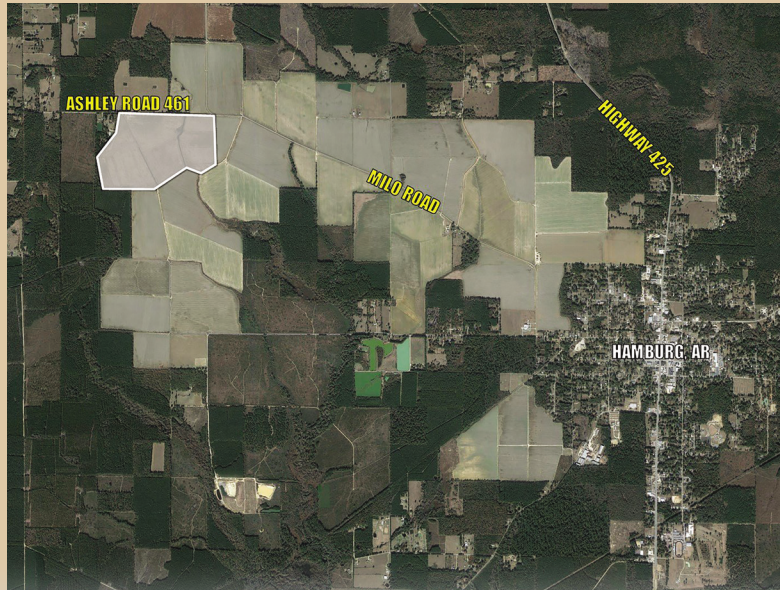
870.847.0945 | Joel@PeoplesCompany.com 515.222.1347 | Steve@PeoplesCompany.com

About the Land

Peoples Company is offering 209.01 acres m/l which consists of approximately 201.95 FSA cropland acres m/l. Primary soil types include Perry Clay and Portland Clay. Improvements include precision leveling and 2 wells. Located along the south side of Ashley Road, this tract is situated in Sections 7 and 8 of Carter Township.

Price:
\$1,009,750

209.01 Acres M/L



Directions

From Hamburg, travel west on Washington Street for 1 mile before turning right on Milo Road. Travel north on Milo Road for 3 miles following the curve as the road turns into Ashley Road and the farm will be located on the south side of the road. Look for Peoples Company signs.

Address

Ashley Rd Hamburg, AR 71646



• 209.01 ACRES M/L •

Ashley County

ARKANSAS

Contact

Joel King, ALC, CAI

870.847.0945 | Joel@PeoplesCompany.com

Steve Bruere

515.222.1347 | Steve@PeoplesCompany.com

Listing #15907



1201 Nettleton Circle
Jonesboro, Arkansas 72401
PeoplesCompany.com

Contact

Joel King, ALC, CAI
870.847.0945
Joel@PeoplesCompany.com

Steve Bruere
515.222.1347
Steve@PeoplesCompany.com

• 209.01 ACRES M/L •

Ashley County
ARKANSAS

Follow us on Social Media!     

PeoplesCompany.com | Listing #15907

All information, regardless of source, is deemed reliable but not guaranteed and should be independently verified. The information may not be used for any purpose other than to identify and analyze properties and services. The data contained herein is copyrighted by Peoples Company and is protected by all applicable copyright laws. Any dissemination of this information is in violation of copyright laws and is strictly prohibited.