

Lafayette County

WISCONSIN

416.00
ACRES M/L

LAND
AVAILABLE

ADAM CRIST | 608.482.1229
Adam.Crist@PeoplesCompany.com

LISTING #15968

PC PEOPLES
COMPANY
INNOVATIVE. REAL ESTATE. SOLUTIONS.



349.46 FSA TILLABLE ACRES

ABOUT THE PROPERTY

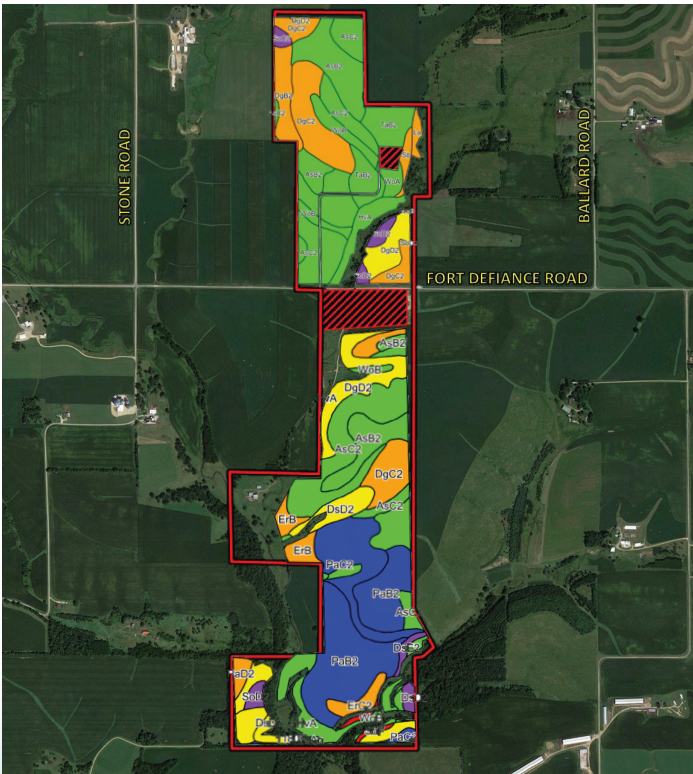
Peoples Company is pleased to present 416 acres m/l of high-quality Lafayette County, Wisconsin farmland with an estimated 349.46 FSA tillable acres. The farm contains highly productive soil types including Ashdale loam, Huntsville loam, Tama loam, and Palsgrove loam. This farm has great access and long straight rows with rich soils. The current owner has been practicing no-till farming for over 20 years. Not very often does a farm of this caliber come to the market. This land would be a great add-on to an existing farming operation or a smart investment for the Buyer looking to diversify their portfolio.



DIRECTIONS

From Mineral Point, WI: Travel south on Highway 23 for 5.2 miles, left onto Fort Defiance Road for 1.7 miles, property is on both sides of the road. Look for the Peoples Company Signs.

From Darlington, WI: Travel north on Highway 23 for 8.5 miles, right onto Fort Defiance Road for 1.7 miles, property is on both sides of the road. Look for the Peoples Company Signs.



CODE	SOIL DESCRIPTION	ACRE	PERCENT OF FIELD
PaB2	Palsgrove silt loam	49.33	23.3%
AsC2	Ashdale silt loam	33.15	15.6%
PaC2	Palsgrove silt loam	24.12	11.4%
AsB2	Ashdale silt loam	20.21	9.5%
DsD2	Newglarus silt loam	15.25	7.2%
DgD2	Dodgeville silt loam	14.03	6.6%
DgC2	Dodgeville silt loam	13.50	6.4%
HvA	Huntsville silt loam	13.42	6.3%
ErB	Eleroy silt loam	6.53	3.1%
ErC2	Eleroy silt loam	4.40	2.1%
WoB	Worthen silt loam	4.13	1.9%
DsC2	Newglarus silt loam	4.05	1.9%
DsE2	Newglarus silt loam	3.26	1.5%
PaD2	Palsgrove silt loam	2.58	1.2%
SoD2	Sogn silt loam	1.99	0.9%



ADAM CRIST | 608.482.1229
Adam.Crist@PeoplesCompany.com



207 High Street
Mineral Point, WI 53565



PeoplesCompany.com
Listing #15968



ADAM CRIST | 608.482.1229
Adam.Crist@PeoplesCompany.com

