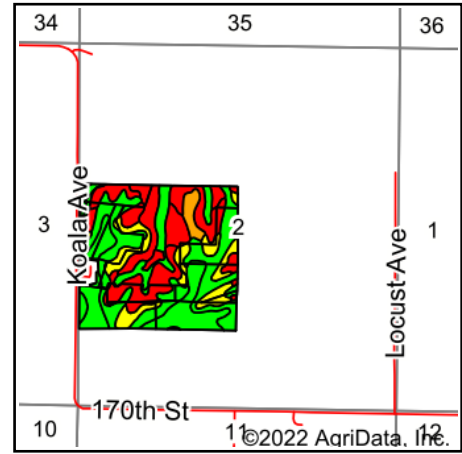
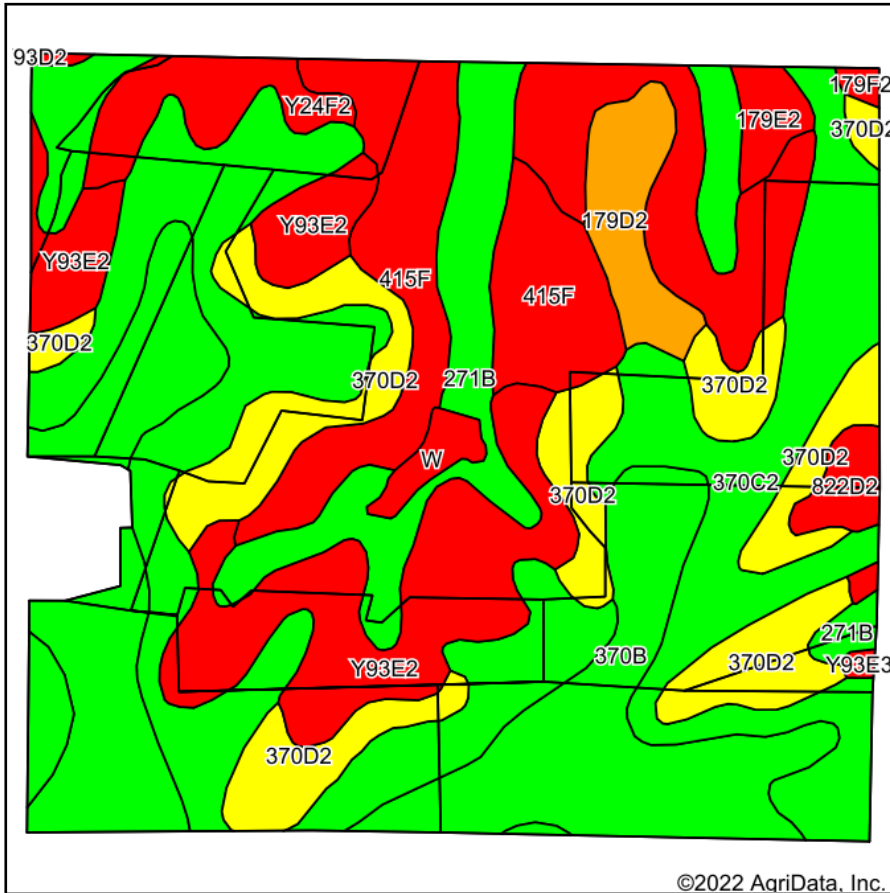


# Total Soils Map



State: **Iowa**  
 County: **Guthrie**  
 Location: **2-80N-32W**  
 Township: **Seely**  
 Acres: **136.57**  
 Date: **3/20/2022**



Maps Provided By:



Soils data provided by USDA and NRCS.

©2022 AgriData, Inc.

Area Symbol: IA077, Soil Area Version: 30

Code	Soil Description	Acres	Percent of field	CSR2 Legend	Non-Irr Class *c	*i Corn Bu	*i Soybeans Bu	CSR2**	CSR	*n NCCPI Overall	
370C2	Sharpsburg silty clay loam, 5 to 9 percent slopes, eroded	37.45	27.4%		IIIe	204.8	59.4	80	67	84	
370B	Sharpsburg silty clay loam, 2 to 5 percent slopes	22.23	16.3%		Ile	225.6	65.4	91	87	93	
370D2	Sharpsburg silty clay loam, 9 to 14 percent slopes, eroded	17.59	12.9%		IIIe	177.6	51.5	54	57	80	
Y93E2	Shelby-Adair clay loams, dissected till plain, 14 to 18 percent slopes, eroded	15.73	11.5%		IVe	0	0	28		62	
415F	Montieth loamy sand, 18 to 30 percent slopes	12.44	9.1%		VIle	80	23.2	5	5	11	
271B	Olmitz-Colo, occasionally flooded, complex, 0 to 5 percent slopes	12.15	8.9%		Ile			84		88	
179F2	Gara loam, dissected till plain, 18 to 25 percent slopes, eroded	7.64	5.6%		VIle	115.2	33.4	16	13	57	
179D2	Gara loam, dissected till plain, 9 to 14 percent slopes, eroded	3.72	2.7%		IVe	163.2	47.3	43	43	76	
Y24F2	Shelby clay loam, dissected till plain, 18 to 25 percent slopes, eroded	3.45	2.5%		VIe	0	0	20		55	
822D2	Lamoni silty clay loam, 9 to 14 percent slopes, eroded	1.57	1.1%		IVe	100.8	29.2	10	15	60	
179E2	Gara loam, dissected till plain, 14 to 18 percent slopes, eroded	1.38	1.0%		VIe	139.2	40.4	32	33	72	
W	Water	1.05	0.8%			0	0	0	0		
Y93E3	Shelby-Adair clay loams, dissected till plain, 14 to 18 percent slopes, severely eroded	0.17	0.1%		VIe	0	0	24		60	
<b>Weighted Average</b>						<b>3.58</b>	<b>136.5</b>	<b>39.6</b>	<b>57.9</b>	<b>*-</b>	<b>*n 72.6</b>

\*\*IA has updated the CSR values for each county to CSR2.

\*- CSR weighted average cannot be calculated on the current soils data, use prior data version for csr values.

\*n: The aggregation method is "Weighted Average using all components"

\*c: Using Capabilities Class Dominant Condition Aggregation Method

\*i Yield data provided by the ISPAID Database version 8.1.1 developed by IA State University.

Soils data provided by USDA and NRCS.