

the VILLAS

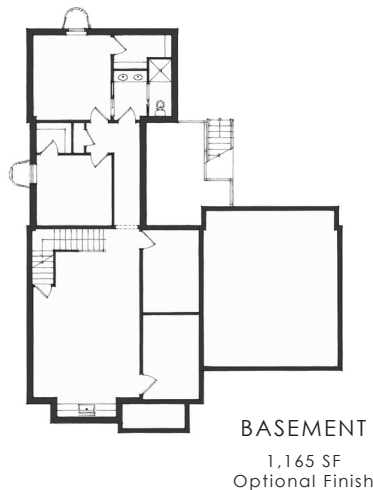
AT GREAT WESTERN CROSSING

2750 N BRIER LN, CUMMING



Modern farmhouse cottage featuring simple lines with board and batten siding. Front yard terrace and outdoor living area. Window bay featuring modern styled windows. Open floor plan concept with 10' ceilings and gas fireplace. Private primary bedroom suite on the main level. Other features: zero entry, convenient laundry location next to bedrooms, rear entertaining deck with access just off of kitchen and dining area, unfinished lower level can be finished with 2 more bedrooms if needed. Walk to town farm, vegetable stand, farmers market events, Middlebrook Mercantile (wine and provisions), and other community amenities in this amazing development! DUES: \$80 a month cover snow removal and lawn care (plus \$650 annual GWC dues).

The Parkland Floor Plan



Check out the Middlebrook community at www.middlebrookfarm.com

1,423 SF
2 BEDROOM
2 BATH
ZERO ENTRY

OPTION TO FINISH BASEMENT

GROUNDBREAKERHOMES.COM

