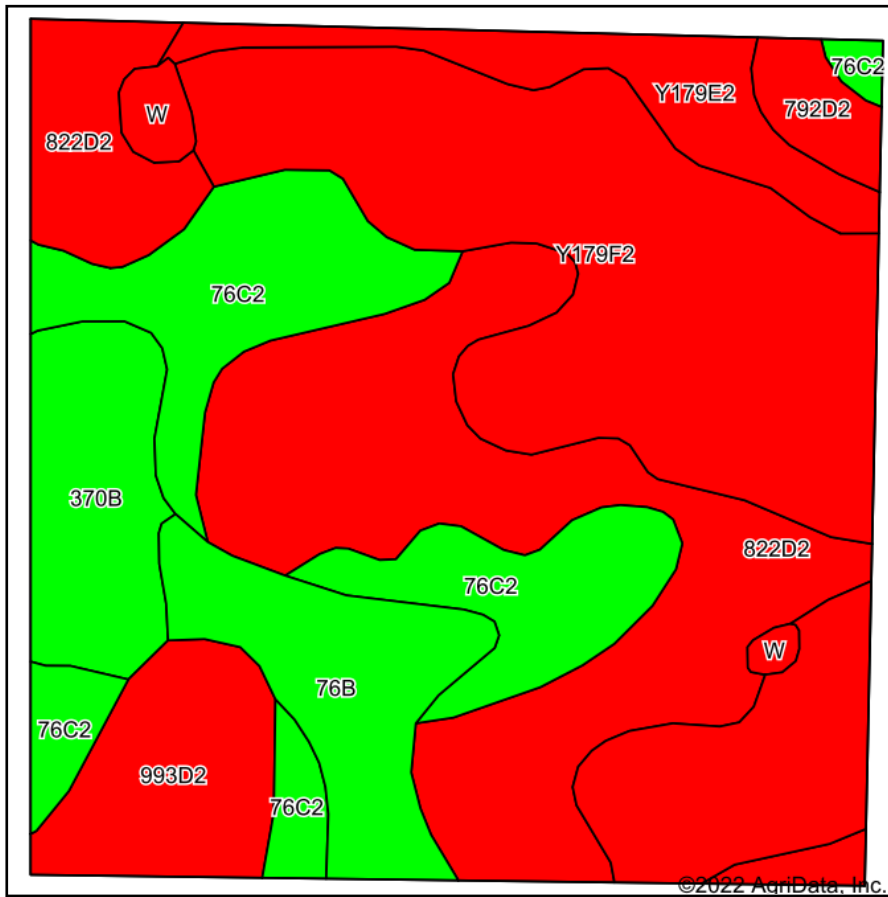
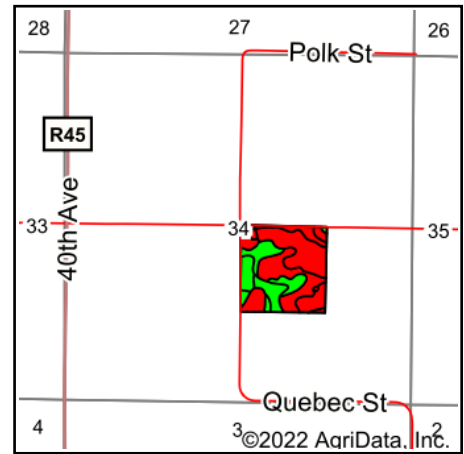


Soils Map



Soils data provided by USDA and NRCS.



State: **Iowa**
 County: **Warren**
 Location: **15-75N-25W**
 Township: **Jackson**
 Acres: **40**
 Date: **5/18/2022**

PC PEOPLES
 COMPANY
 INNOVATIVE. REAL ESTATE. SOLUTIONS.

Maps Provided By:
surety
 CUSTOMIZED ONLINE MAPPING
 © AgriData, Inc. 2021 www.AgriDataInc.com



Area Symbol: IA181, Soil Area Version: 26

Code	Soil Description	Acres	Percent of field	CSR2 Legend	Non-Irr Class *c	CSR2**	CSR	*n NCCPI Overall	*n NCCPI Corn	*n NCCPI Small Grains	*n NCCPI Soybeans
Y179F2	Gara loam, dissected till plain, 18 to 25 percent slopes, eroded	12.45	31.1%		VIIe	16		57	57	36	38
822D2	Lamoni silty clay loam, 9 to 14 percent slopes, eroded	10.41	26.0%		IVe	10	15	60	60	54	43
76C2	Ladoga silt loam, dissected till plain, 5 to 9 percent slopes, eroded	6.19	15.5%		IIIe	75	65	78	78	69	66
76B	Ladoga silt loam, 2 to 5 percent slopes	2.89	7.2%		Ile	86	85	84	84	77	78
370B	Sharpsburg silty clay loam, 2 to 5 percent slopes	2.50	6.2%		Ile	91	87	93	93	78	80
993D2	Armstrong-Gara loams, 9 to 14 percent slopes, moderately eroded	2.40	6.0%		IVe	23	20	68	68	52	47
Y179E2	Gara loam, dissected till plain, 14 to 18 percent slopes, eroded	2.02	5.1%		VIe	32		72	72	54	51
792D2	Armstrong loam, 9 to 14 percent slopes, moderately eroded	0.69	1.7%		IVe	7	13	65	65	51	43
W	Water	0.45	1.1%			0	0				
Weighted Average						4.57	34.2	*n 66.1	*n 66.1	*n 53.1	*n 50

**IA has updated the CSR values for each county to CSR2.

*- CSR weighted average cannot be calculated on the current soils data, use prior data version for csr values.

*n: The aggregation method is "Weighted Average using all components"

*c: Using Capabilities Class Dominant Condition Aggregation Method

Soils data provided by USDA and NRCS.