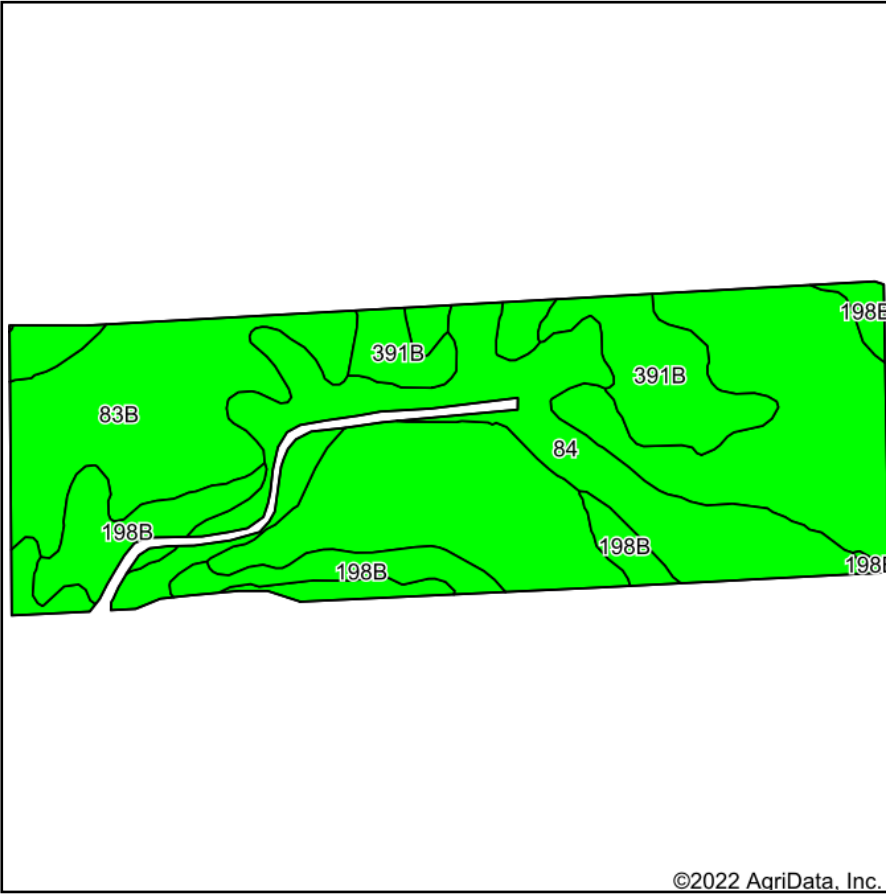
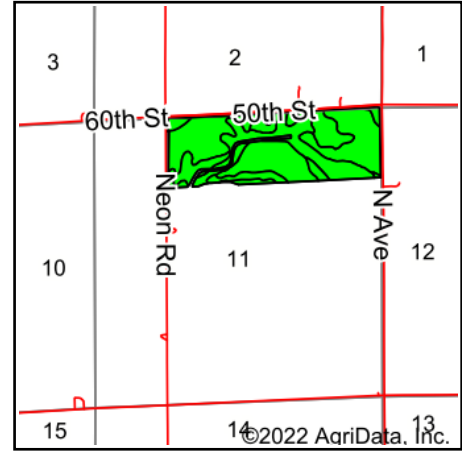


Tillable Soils Map



Soils data provided by USDA and NRCS.



State: **Iowa**
 County: **Fayette**
 Location: **11-91N-9W**
 Township: **Jefferson**
 Acres: **111.84**
 Date: **5/16/2022**



Maps Provided By:



© AgriData, Inc. 2021

www.AgriDataInc.com



Area Symbol: IA065, Soil Area Version: 26

Code	Soil Description	Acres	Percent of field	CSR2 Legend	Non-Irr Class *c	CSR2**
83B	Kenyon loam, 2 to 5 percent slopes	61.86	55.3%		Ile	90
84	Clyde clay loam, 0 to 3 percent slopes	27.20	24.3%		Ilw	88
198B	Floyd loam, 1 to 4 percent slopes	12.31	11.0%		Ilw	89
391B	Clyde-Floyd complex, 1 to 4 percent slopes	10.47	9.4%		Ilw	87
Weighted Average					2.00	89.1

**IA has updated the CSR values for each county to CSR2.

*c: Using Capabilities Class Dominant Condition Aggregation Method

Soils data provided by USDA and NRCS.