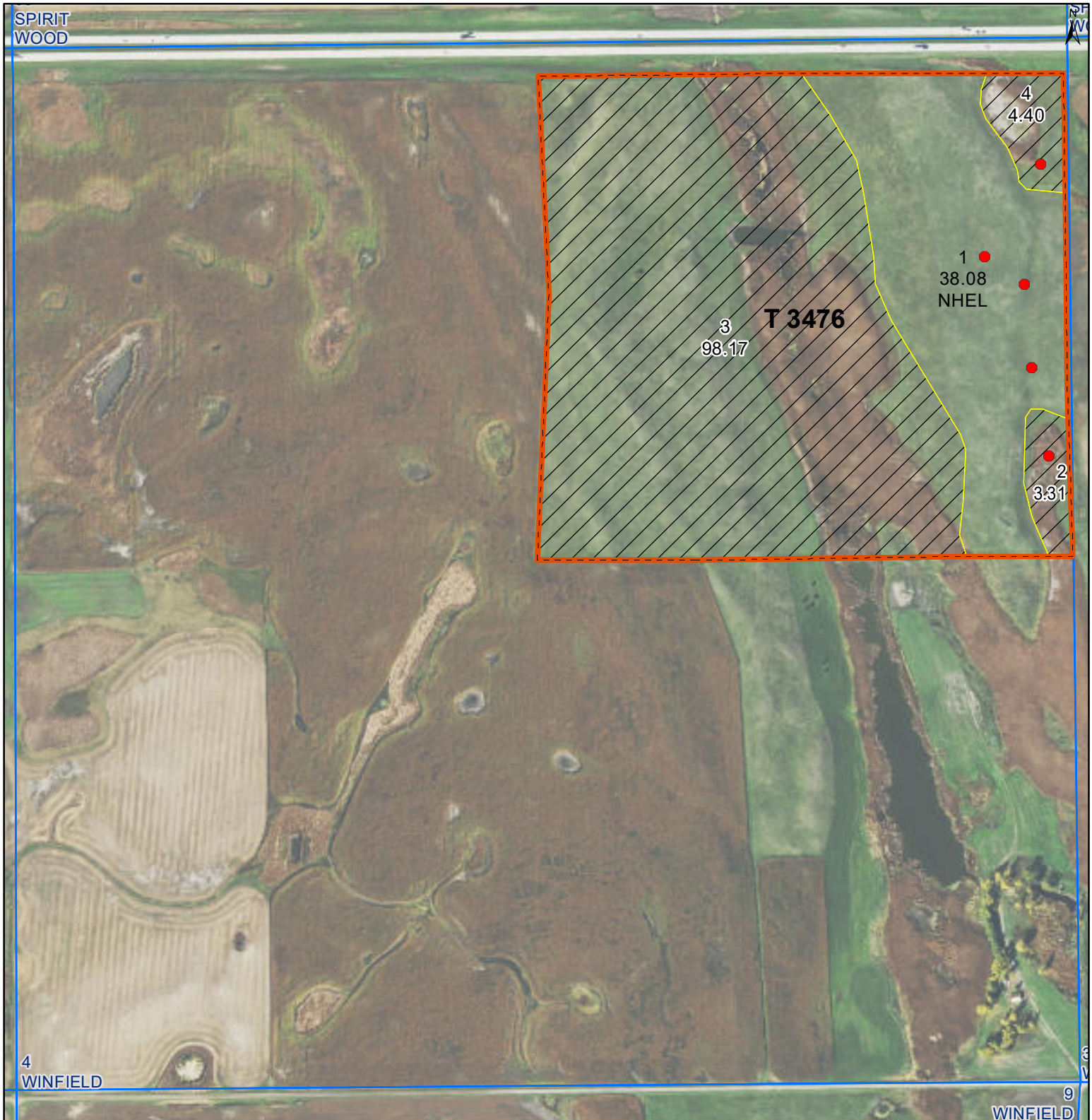




United States
Department of
Agriculture

Stutsman County, North Dakota

Farm **5335**



Common Land Unit

- Non-Cropland
- Cropland

Tract Boundary

- Tract Boundary
- PLSS

Wetland Determination Identifiers

- Restricted Use
- Limited Restrictions
- Exempt from Conservation Compliance Provisions

Unless Otherwise Noted:
All crops are for grain
All crops are non-irrigated
Shares are 100% to Operator

2022 Program Year

Map Created April 19, 2022

S4 T139N R62W

Phy Cnty: Stutsman

0 235 470 940
Feet

United States Department of Agriculture (USDA) Farm Service Agency (FSA) maps are for FSA Program administration only. This map does not represent a legal survey or reflect actual ownership; rather it depicts the information provided directly from the producer and/or National Agricultural Imagery Program (NAIP) imagery. The producer accepts the data 'as is' and assumes all risks associated with its use. USDA-FSA assumes no responsibility for actual or consequential damage incurred as a result of any user's reliance on this data outside FSA Programs. Wetland identifiers do not represent the size, shape, or specific determination of the area. Refer to your original determination (CPA-026 and attached maps) for exact boundaries and determinations or contact USDA Natural Resources Conservation Service (NRCS). **The imagery displayed on this map was collected in calendar year 2021.**