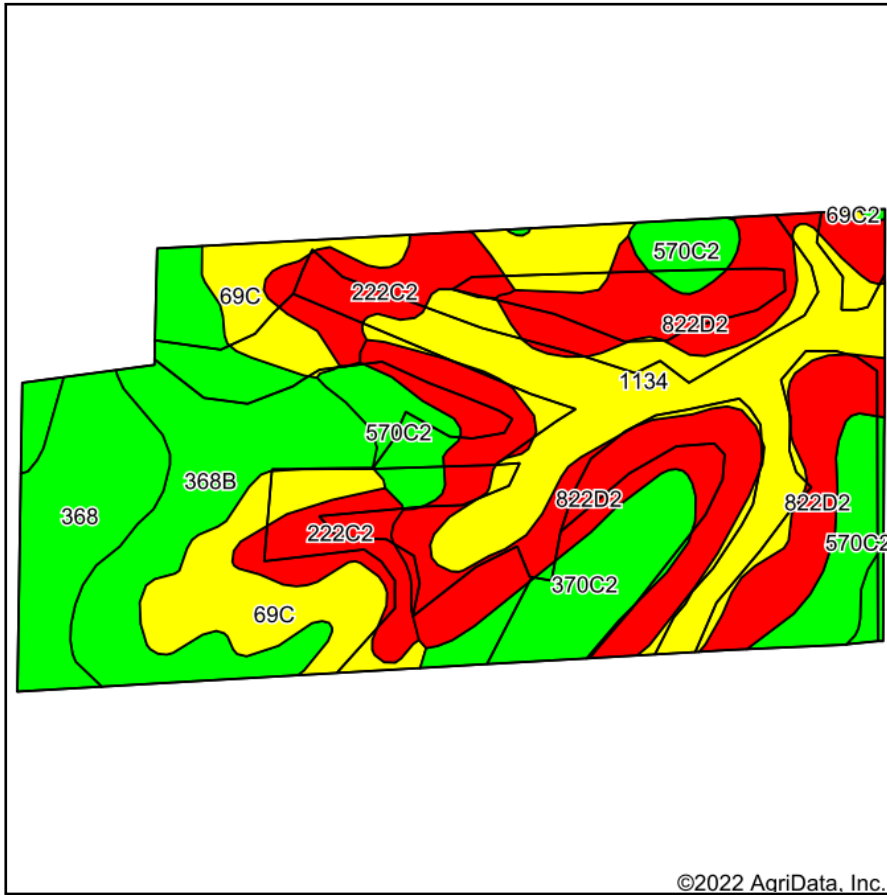
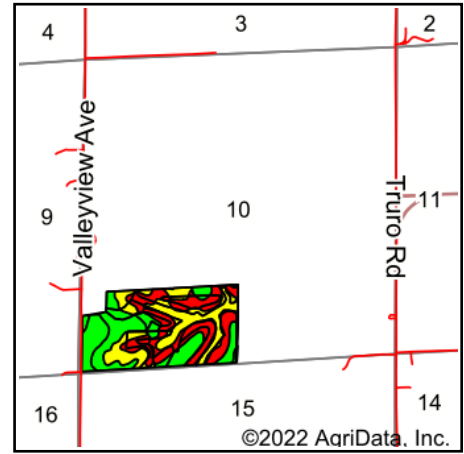


Soils Map



Soils data provided by USDA and NRCS.



State: **Iowa**
 County: **Madison**
 Location: **10-74N-26W**
 Township: **Ohio**
 Acres: **75.65**
 Date: **6/8/2022**

PC PEOPLES
 COMPANY
 INNOVATIVE. REAL ESTATE. SOLUTIONS.

Maps Provided By:

surety
 CUSTOMIZED ONLINE MAPPING
 © AgriData, Inc. 2021 www.AgriDataInc.com



Area Symbol: IA121, Soil Area Version: 25

Code	Soil Description	Acres	Percent of field	CSR2 Legend	Non-Irr Class *c	CSR2**	*n NCCPI Overall	*n NCCPI Corn	*n NCCPI Small Grains	*n NCCPI Soybeans
822D2	Lamoni clay loam, 9 to 14 percent slopes, eroded	18.80	24.9%		IVe	7	58	58	53	41
1134	Colo, frequently flooded-Ely silty clay loams, gullied, 2 to 5 percent slopes	12.59	16.6%		Ile	59	45	7	7	45
368B	Macksburg silty clay loam, 2 to 5 percent slopes	11.71	15.5%		Ile	89	87	87	79	78
69C	Clearfield silty clay loam, dissected till plain, 5 to 9 percent slopes	9.70	12.8%		IIIw	59	75	75	72	67
222C2	Clarinda silty clay loam, 5 to 9 percent slopes, eroded	6.16	8.1%		IVw	38	59	59	51	49
570C2	Nira silty clay loam, dissected till plain, 5 to 9 percent slopes, eroded	6.07	8.0%		IIIe	81	87	87	70	71
368	Macksburg silty clay loam, 0 to 2 percent slopes	6.03	8.0%		Iw	93	87	87	78	79
370C2	Sharpsburg silty clay loam, 5 to 9 percent slopes, eroded	4.59	6.1%		IIIe	80	84	84	69	67
Weighted Average					2.85	54.8	*n 68.8	*n 62.5	*n 56	*n 58.4

**IA has updated the CSR values for each county to CSR2.

*n: The aggregation method is "Weighted Average using all components"

*c: Using Capabilities Class Dominant Condition Aggregation Method

Soils data provided by USDA and NRCS.