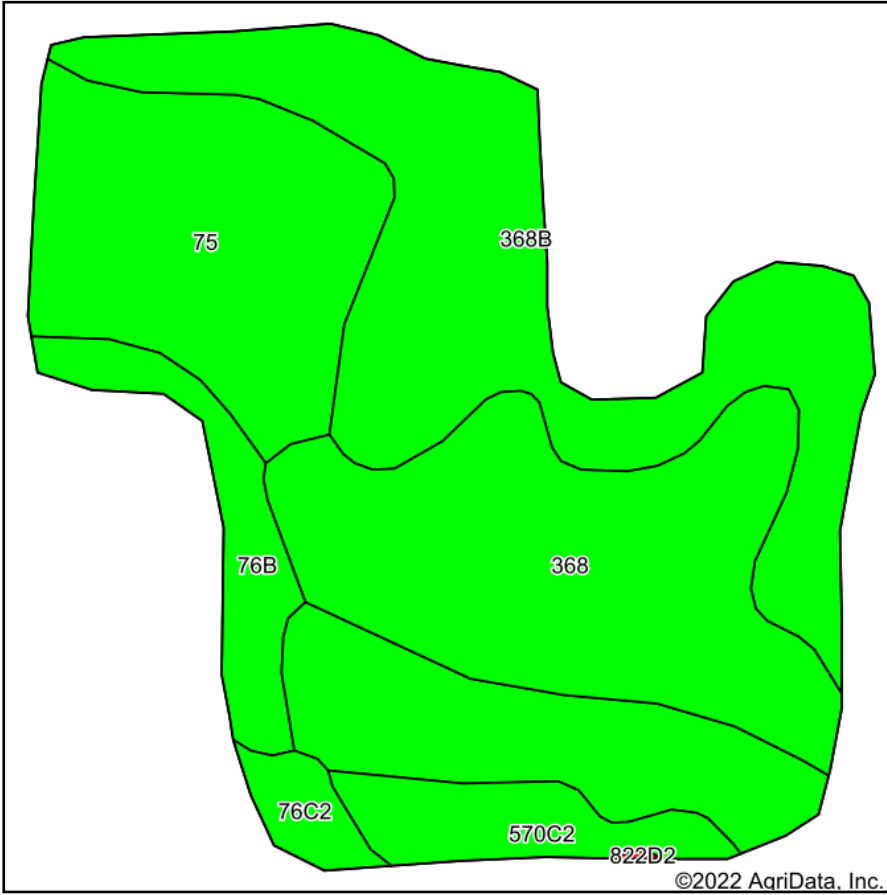
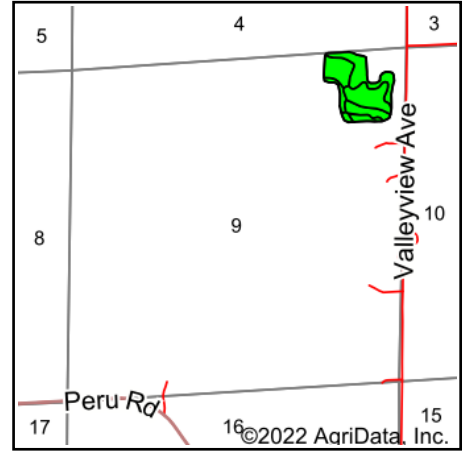


Soils Map



Soils data provided by USDA and NRCS.



State: **Iowa**
 County: **Madison**
 Location: **9-74N-26W**
 Township: **Ohio**
 Acres: **19.13**
 Date: **6/8/2022**



Maps Provided By:



Area Symbol: IA121, Soil Area Version: 25

Code	Soil Description	Acres	Percent of field	CSR2 Legend	Non-Irr Class *c	CSR2**	*n NCCPI Overall	*n NCCPI Corn	*n NCCPI Small Grains	*n NCCPI Soybeans	
368B	Macksburg silty clay loam, 2 to 5 percent slopes	7.91	41.3%		Ile	89	87	87	79	78	
368	Macksburg silty clay loam, 0 to 2 percent slopes	4.99	26.1%		Iw	93	87	87	78	79	
75	Givin silt loam	3.77	19.7%		Iw	83	91	91	78	82	
76B	Ladoga silt loam, 2 to 5 percent slopes	1.09	5.7%		Ile	86	84	84	77	78	
570C2	Nira silty clay loam, dissected till plain, 5 to 9 percent slopes, eroded	0.97	5.1%		IIle	81	87	87	70	71	
76C2	Ladoga silt loam, dissected till plain, 5 to 9 percent slopes, eroded	0.40	2.1%		IIle	75	78	78	69	66	
Weighted Average						1.61	88	*n 87.4	*n 87.4	*n 77.8	*n 78.4

**IA has updated the CSR values for each county to CSR2.

*n: The aggregation method is "Weighted Average using all components"

*c: Using Capabilities Class Dominant Condition Aggregation Method

Soils data provided by USDA and NRCS.