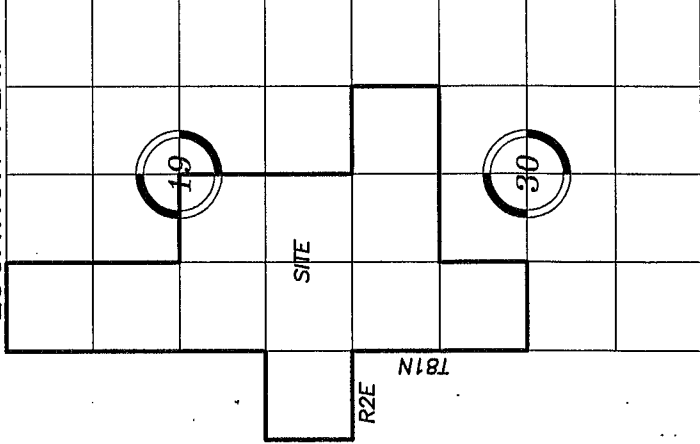


LOCATION PLAN



Surveyor's Notes

Monuments shown hereon are 5/8" rods unless noted otherwise.

ZONING APPROVAL

This plat meets the Subdivision & Zoning Ordinance Requirements for Clinton County, IA.

Clinton County Zoning Date

LEGEND

- BOUNDARY OF SURVEY
- MONUMENT FOUND
- STONE FOUND
- SET IRON PIN W/CAP
- CHISELED "X"
- SECTION LINE
- RIGHT OF WAY LINE
- FENCE LINE
- BUILDING SETBACK
- UTILITY EASEMENT
- DEED/PLAT DIMENSION

NOTE: BEARINGS ARE ASSUMED

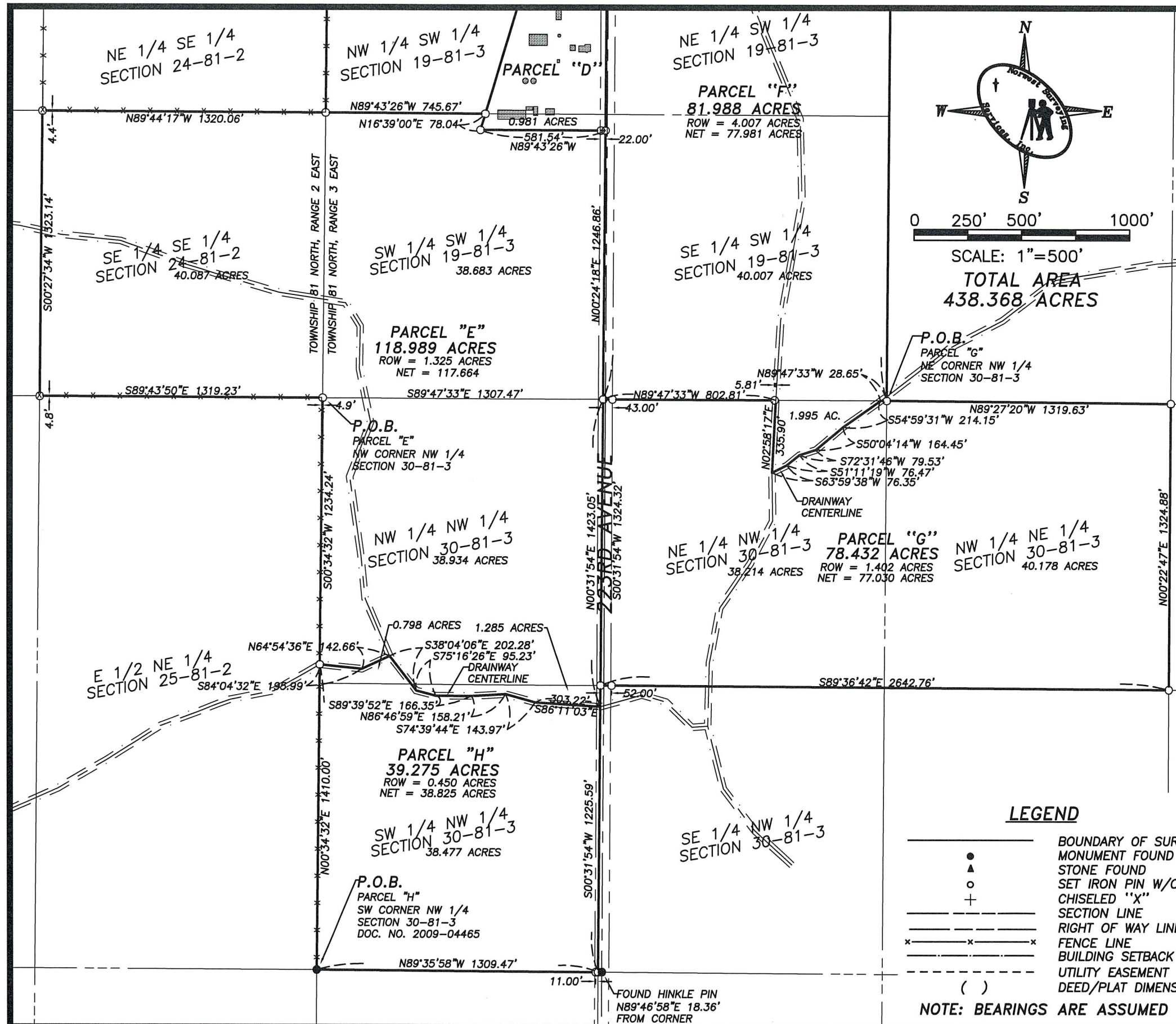
NORWEST SURVEYING SERVICES, INC.
PROFESSIONAL LAND SURVEYORS & LAND PLANNERS
301 EAST LINCOLNWAY
MORRISON, ILLINOIS 61270
PHONE (815) 772-7179
NWSURVING@GCHSIL.COM
SERVING ILLINOIS & IOWA SINCE 1974

SURVEYED BY	JMW, CFV	FIELD WORK COMPLETED	JOB NO.	2022230	DRAWN BY	WEH
BOOK NO.	268-41	PLAT NO.	2022254	DRAWING NAME	19 OCT 22	DRAWING DATE
REVISION DATES		CHECKED BY			SCALE	1"=500'

FARM PARCEL SURVEY

MEINTS FAMILY FARM

RESERVED FOR RECORDER



PLAT OF SURVEY

Of the Southeast Quarter (SE 1/4) of the Southeast Quarter (SE 1/4) of Section 24 in Township 81 North (T81N), Range 2 East (R2E) of the Fifth Principal Meridian (5th PM), and parts of Sections 19 & 30 in Township 81 North (T81N), Range 3 East (R3E) of the Fifth Principal Meridian (5th PM), all in Clinton County, Iowa:

The descriptions of the parcels depicted hereon are attached hereto and made a part hereof.

SURVEYOR'S REPORT

This Plat represents an original boundary survey of the parcel described hereon and was done at the request of Agent Alan McNeil of DeWitt, Iowa.

All structural or utility improvements, surface and subsurface, on and/or adjacent to the site are not necessarily shown. All monuments exist as shown hereon. Bearings are Degrees, Minutes and Seconds and are referenced to assumed datum; distances are shown as feet and decimal parts thereof.

This survey includes no investigation or independent search for easements of record, encumbrances, deed restrictions, restrictive covenants, ownership, title evidence, or any other facts that an accurate and current title search may disclose. Right-of-Way lines shown hereon are a graphic representation only and may not depict the actual location of the public easement.

I hereby certify that this Land Surveying document was prepared, and that the related survey work was performed, by me or under my direct personal supervision and that I am a duly Licensed Land Surveyor under the laws of the State of Iowa.

William E. Holt
William E. Holt
Dated this 19th day of October 2022 C.E.
State of Iowa Reg. No. 14105
My registration expires December 31, 2022 C.E.



SHEET 2 OF 2

NORWEST SURVEYING SERVICES, INC.
PROFESSIONAL LAND SURVEYORS & LAND PLANNERS
301 EAST LINCOLNWAY MORRISON, ILLINOIS 61270
PHONE (815) 772-7179 NWSURVEYING@MCHSI.COM
SERVING ILLINOIS & IOWA SINCE 1974

SURVEYED BY JMW, CFW	FIELD WORK COMPLETED 10-19-22	JOB NO. 2022230	DRAWN BY WEH
BOOK NO. 268-41	PLAT NO. 2022230B	DRAWING NAME 2002254	DRAWING DATE 19 OCT 22
REVISION DATES	CHECKED BY	SCALE 1"=500'	

PROJECT
FARM PARCEL SURVEY
TITLE
MEINTS FAMILY FARM

BOUNDARY DESCRIPTIONS

MEINTS FAMILY FARM

PROJECT NO. 2022230

PARCEL "B"

Part of the West Half (W 1/2) of the Northwest Quarter (NW 1/4) of Section 19 in Township 81 North (T81N), Range 3 East (R3E) of the Fifth Principal Meridian (5th PM), Clinton County, Iowa, bounded and described as follows, to wit:

Beginning at the Northwest corner of the Northwest Quarter (NW 1/4) of said Section 19; thence South 89 Degrees 47 Minutes 21 Seconds East, along the North line thereof, a distance of 1,299.10 feet to the Northeast corner of said West Half (W 1/2) of the Northwest Quarter (NW 1/4) of Section 19; thence South 00 Degrees 24 Minutes 18 Seconds West, along the East line thereof, a distance of 2,460.55 feet to a point in the drainway crossing said West Half (W 1/2) of the Northwest Quarter (NW 1/4) of Section 19; thence North 64 Degrees 17 Minutes 54 Seconds West, with said drainway, a distance of 426.87 feet; thence North 53 Degrees 52 Minutes 34 Seconds West, with said drainway, a distance of 225.07 feet; thence North 41 Degrees 26 Minutes 39 Seconds West, with said drainway, a distance of 429.12 feet; thence North 38 Degrees 14 Minutes 18 Seconds West, with said drainway, a distance of 586.23 feet; thence North 79 Degrees 48 Minutes 46 Seconds West, with said drainway, a distance of 81.37 feet to the West line of said Northwest Quarter (NW 1/4) of Section 19; thence North 00 Degrees 29 Minutes 44 Seconds East, along said West line, a distance of 1,351.00 feet to the Point of Beginning;

Containing 59.172 acres, more or less.

PARCEL "C"

Part of the Southwest Quarter (SW 1/4) of the Northwest Quarter (NW 1/4) and part of the Northwest Quarter (NW 1/4) of the Southwest Quarter (SW 1/4) of Section 19 in Township 81 North (T81N), Range 3 East (R3E) of the Fifth Principal Meridian (5th PM), all in Clinton County, Iowa, bounded and described as follows, to wit:

Beginning at the Southwest corner of said Northwest Quarter (NW 1/4) of the Southwest Quarter (SW 1/4) of Section 19; thence South 89 Degrees 43 Minutes 26 Seconds East, along the South line thereof, a distance of 745.67 feet; thence North 16 Degrees 39 Minutes 00 Seconds East, a distance of 559.81 feet; thence South 89 Degrees 35 Minutes 42 Seconds East, a distance of 403.10 feet to the East line of said Northwest Quarter (NW 1/4) of the Southwest Quarter (SW 1/4) of Section 19; thence North 00 Degrees 24 Minutes 18 Seconds East, along said East line, a distance of 974.66 feet to a point in the drainway crossing the West Half (W 1/2) of the Northwest Quarter (NE 1/4) of said Section 19; thence North 64 Degrees 17 Minutes 54 Seconds West, with said drainway, a distance of 426.87 feet; thence North 53 Degrees 52 Minutes 34 Seconds West, with said drainway, a distance of 225.07 feet; thence North 41 Degrees 26 Minutes 39 Seconds West, with said drainway, a distance of 429.12 feet; thence North 38 Degrees 14 Minutes 18 Seconds West, with said drainway, a distance of 586.23 feet; thence North 79 Degrees 48 Minutes 46 Seconds West, with said drainway, a distance of 81.37 feet to the West line of said Section 19; thence South 00 Degrees 29 Minutes 44 Seconds West, along said West line, a distance of 2,618.95 feet to the Point of Beginning;

Containing 53.600 acres, more or less.

PARCEL "D"

Part of the West Half (W 1/2) of the Southwest Quarter (SW 1/4) of Section 19 in Township 81 North (T81N), Range 3 East (R3E) of the Fifth Principal Meridian (5th PM), all in Clinton County, Iowa, bounded and described as follows, to wit:

Commencing at the Southwest corner of the Northwest Quarter (NW 1/4) of the Southwest Quarter (SW 1/4) of said Section 19; thence South 89 Degrees 43 Minutes 26 Seconds East, along the South line thereof, a distance of 745.67 feet to the Point of Beginning of the hereinafter described parcel; thence North 16 Degrees 39 Minutes 00 Seconds East, a distance of 559.81 feet; thence South 89 Degrees 35 Minutes 42 Seconds East, a distance of 403.10 feet to the East line of said West Half (W 1/2) of the Southwest Quarter (SW 1/4) of Section 19; thence South 00 Degrees 24 Minutes 18 Seconds West, along said East line, a distance of 611.08 feet; thence North 89 Degrees 43 Minutes 26 Seconds West, a distance of 581.54 feet; thence North 16 Degrees 39 Minutes 00 Seconds East, a distance of 78.04 feet to the Point of Beginning;

Containing 6.912 acres, more or less.

PARCEL "E"

The Southeast Quarter (SE 1/4) of the Southeast Quarter (SE 1/4) of Section 24 in Township 81 North (T81N), Range 2 East (R2E) of the Fifth Principal Meridian (5th PM), part of the Southwest Quarter (SW 1/4) of Section 19 and part of the Northwest Quarter (NW 1/4) of Section 30 in Township 81 North (T81N), Range 3 East (R3E) of the Fifth Principal Meridian (5th PM), Clinton County, Iowa, bounded and described as follows, to wit:

Beginning at the Northwest corner of the Northwest Quarter (NW 1/4) of said Section 30; thence South 00 Degrees 34 Minutes 32 Seconds West, along the West line thereof, a distance of 1,234.24 feet to a point in the drainway crossing the West Half (W 1/2) of said Northwest Quarter (NW 1/4) of Section 30; thence South 84 Degrees 04 Minutes 32 Seconds East, with said drainway, a distance of 195.99 feet; thence North 64 Degrees 54 Minutes 36 Seconds East, with said drainway, a distance of 142.66 feet; thence South 38 Degrees 04 Minutes 06 Seconds East, with said drainway, a distance of 202.28 feet; thence South 75 Degrees 16 Minutes 26 Seconds East, with said drainway, a distance of 95.23 feet; thence South 89 Degrees 39 Minutes 52 Seconds East, with said drainway, a distance of 166.35 feet; thence North 86 Degrees 46 Minutes 59 Seconds East, with said drainway, a distance of 158.21 feet; thence South 74 Degrees 39 Minutes 44 Seconds East, with said drainway, a distance of 143.97 feet; thence South 86 Degrees 11 Minutes 03 Seconds East, with said drainway, a distance of 303.22 feet to the East line of the West Half (W 1/2) of said Section 30; thence North 00 Degrees 31 Minutes 54 Seconds East, along said West line, a distance of 1,423.05 feet to the Southeast corner of the Southwest Quarter (SW 1/4) of the Southwest Quarter (SW 1/4) of said Section 19; thence North 00 Degrees 24 Minutes 18 Seconds East, along the East line thereof, a distance of 1,246.86 feet; thence North 89 Degrees 43 Minutes 26 Seconds West, a distance of 581.54 feet; thence North 16 Degrees 39 Minutes 00 Seconds East, a distance of 78.04 feet to the North line of said Southwest Quarter (SW 1/4) of the Southwest Quarter (SW 1/4) of Section 19; thence North 89 Degrees 43 Minutes 26 Seconds West, along said North line, a distance of 745.67 feet to the Northeast corner of said Southeast Quarter (SE 1/4) of the Southeast Quarter (SE 1/4) of Section 24; thence North 89 Degrees 44 Minutes 17 Seconds West, along the North line thereof, a distance of 1,320.06 feet to the Northwest corner of said Southeast Quarter (SE 1/4) of the Southeast Quarter (SE 1/4) of Section 24; thence South 00 Degrees 27 Minutes 34 Seconds West, along the West line thereof, a distance of 1,323.14 feet to the Southwest corner of said Southeast Quarter (SE 1/4) of the Southeast Quarter (SE 1/4) of Section 24; thence South 89 Degrees 43 Minutes 50 Seconds East, along the South line thereof, a distance of 1,319.23 feet to the Point of Beginning;

Containing 118.989 acres, more or less.

PARCEL "F"

The East Half (E 1/2) of the Southwest Quarter (SW 1/4) of Section 19 and part of the Northeast Quarter (NE 1/4) of the Northwest Quarter (NW 1/4) of Section 30 in Township 81 North (T81N), Range 3 East (R3E) of the Fifth Principal Meridian (5th PM), all in Clinton County, Iowa, bounded and described as follows, to wit:

Beginning at the Northeast corner of said Southwest Quarter (SW 1/4) of Section 19; thence South 00 Degrees 22 Minutes 31 Seconds West, along the East line thereof, a distance of 2,640.32 feet to the Northeast corner of said Northwest Quarter (NW 1/4) of Section 30; thence North 89 Degrees 47 Minutes 33 Seconds West, along the North line thereof, a distance of 28.65 feet to a point in the drainway crossing said Northeast Quarter (NE 1/4) of the Northwest Quarter (NW 1/4) of Section 30; thence South 54 Degrees 59 Minutes 31 Seconds West, with said drainway, a distance of 214.15 feet; thence South 50 Degrees 04 Minutes 14 Seconds West, with said drainway, a distance of 164.45 feet; thence South 72 Degrees 31 Minutes 46 Seconds West, with said drainway, a distance of 79.53 feet; thence South 51 Degrees 11 Minutes 19 Seconds West, with said drainway, a distance of 76.47 feet; thence South 63 Degrees 59 Minutes 38 Seconds West, with said drainway, a distance of 76.35 feet to the confluence with a drainway from the North; thence North 02 Degrees 58 Minutes 17 Seconds East, with said drainway, a distance of 335.90 feet to the South line of said East Half (E 1/2) of the Southwest Quarter (SW 1/4) of Section 19; thence North 89 Degrees 47 Minutes 33 Seconds West, along said South line, a distance of 802.81 feet to the Southwest corner thereof; thence North 00 Degrees 24 Minutes 18 Seconds East, along the West line of said East Half (E 1/2) of the Southwest Quarter (SW 1/4) of Section 19, a distance of 2,643.48 feet to the Northwest corner of said East Half (E 1/2) of the Southwest Quarter (SW 1/4) of Section 19; thence South 89 Degrees 39 Minutes 18 Seconds East, along the North line thereof, a distance of 1,318.25 feet to the Point of Beginning;

Containing 81.988 acres, more or less.

PARCEL "G"

Part of the Northeast Quarter (NE 1/4) of the Northwest Quarter (NW 1/4) and part of the Northwest Quarter (NW 1/4) of the Northeast Quarter (NE 1/4) of Section 30 in Township 81 North (T81N), Range 3 East (R3E) of the Fifth Principal Meridian (5th PM), all in Clinton County, Iowa, bounded and described as follows, to wit:

Beginning at the Northeast corner of said Northeast Quarter (NE 1/4) of the Northwest Quarter (NW 1/4) of Section 30; thence North 89 Degrees 47 Minutes 33 Seconds West, along the North line thereof, a distance of 28.65 feet to a point in the drainway crossing said Northeast Quarter (NE 1/4) of the Northwest Quarter (NW 1/4) of Section 30; thence South 54 Degrees 59 Minutes 31 Seconds West, with said drainway, a distance of 214.15 feet; thence South 50 Degrees 04 Minutes 14 Seconds West, with said drainway, a distance of 164.45 feet; thence South 72 Degrees 31 Minutes 46 Seconds West, with said drainway, a distance of 79.53 feet; thence South 51 Degrees 11 Minutes 19 Seconds West, with said drainway, a distance of 76.47 feet; thence South 63 Degrees 59 Minutes 38 Seconds West, with said drainway, a distance of 76.35 feet to the confluence with a drainway from the North; thence North 02 Degrees 58 Minutes 17 Seconds East, with said drainway, a distance of 335.90 feet to the North line of said Northeast Quarter (NE 1/4) of the Northwest Quarter (NW 1/4) of Section 30; thence North 89 Degrees 47 Minutes 33 Seconds West, along the North line thereof, a distance of 802.81 feet to the West line of said Northeast Quarter (NE 1/4) of the Northwest Quarter (NW 1/4) of Section 30; thence South 00 Degrees 31 Minutes 54 Seconds West, along said West line, a distance of 1,324.32 feet to the Southwest corner thereof; thence South 89 Degrees 36 Minutes 42 Seconds East, along the South line of said Northeast Quarter (NE 1/4) of the Northwest Quarter (NW 1/4) and said Northwest Quarter (NW 1/4) of the Northeast Quarter (NE 1/4) of Section 30, a distance of 2,642.76 feet to the Southeast corner of said Northwest Quarter (NW 1/4) of the Northeast Quarter (NE 1/4) of Section 30; thence North 00 Degrees 22

Minutes 47 Seconds East, along the East line thereof, a distance of 1,324.88 feet to the Northeast corner of said Northwest Quarter (NW 1/4) of the Northeast Quarter (NE 1/4) of Section 30; thence North 89 Degrees 27 Minutes 20 Seconds West, along the North line of thereof, a distance of 1,319.63 feet to the Point of Beginning;

Containing 78.432 acres, more or less.

PARCEL "H"

Part of the West Half (W 1/2) of the Northwest Quarter (NW 1/4) of Section 30 in Township 81 North (T81N), Range 3 East (R3E) of the Fifth Principal Meridian (5th PM), Clinton County, Iowa, bounded and described as follows, to wit:

Beginning at the Southwest corner of the Northwest Quarter (NW 1/4) of said Section 30; thence North 00 Degrees 34 Minutes 32 Seconds East, along the West line thereof, a distance of 1,410.00 feet to a point in the drainway crossing said West Half (W 1/2) of said Northwest Quarter (NW 1/4) of Section 30 thence South 84 Degrees 04 Minutes 32 Seconds East, with said drainway, a distance of 195.99 feet; thence North 64 Degrees 54 Minutes 36 Seconds East, with said drainway, a distance of 142.66 feet; thence South 38 Degrees 04 Minutes 06 Seconds East, with said drainway, a distance of 202.28 feet; thence South 75 Degrees 16 Minutes 26 Seconds East, with said drainway, a distance of 95.23 feet; thence South 89 Degrees 39 Minutes 52 Seconds East, with said drainway, a distance of 166.35 feet; thence North 86 Degrees 46 Minutes 59 Seconds East, with said drainway, a distance of 158.21 feet; thence South 74 Degrees 39 Minutes 44 Seconds East, with said drainway, a distance of 143.97 feet; thence South 86 Degrees 11 Minutes 03 Seconds East, with said drainway, a distance of 303.22 feet to the East line of the West Half (S 1/2) of said Section 30; thence South 00 Degrees 31 Minutes 54 Seconds West, along said East line, a distance of 1,225.59 feet to the South line of said Northwest Quarter (NW 1/4) of Section 30; thence North 89 Degrees 35 Minutes 58 Seconds West, along said South line, a distance of 1,309.47 feet to the Point of Beginning;

Containing 39.275 acres, more or less.