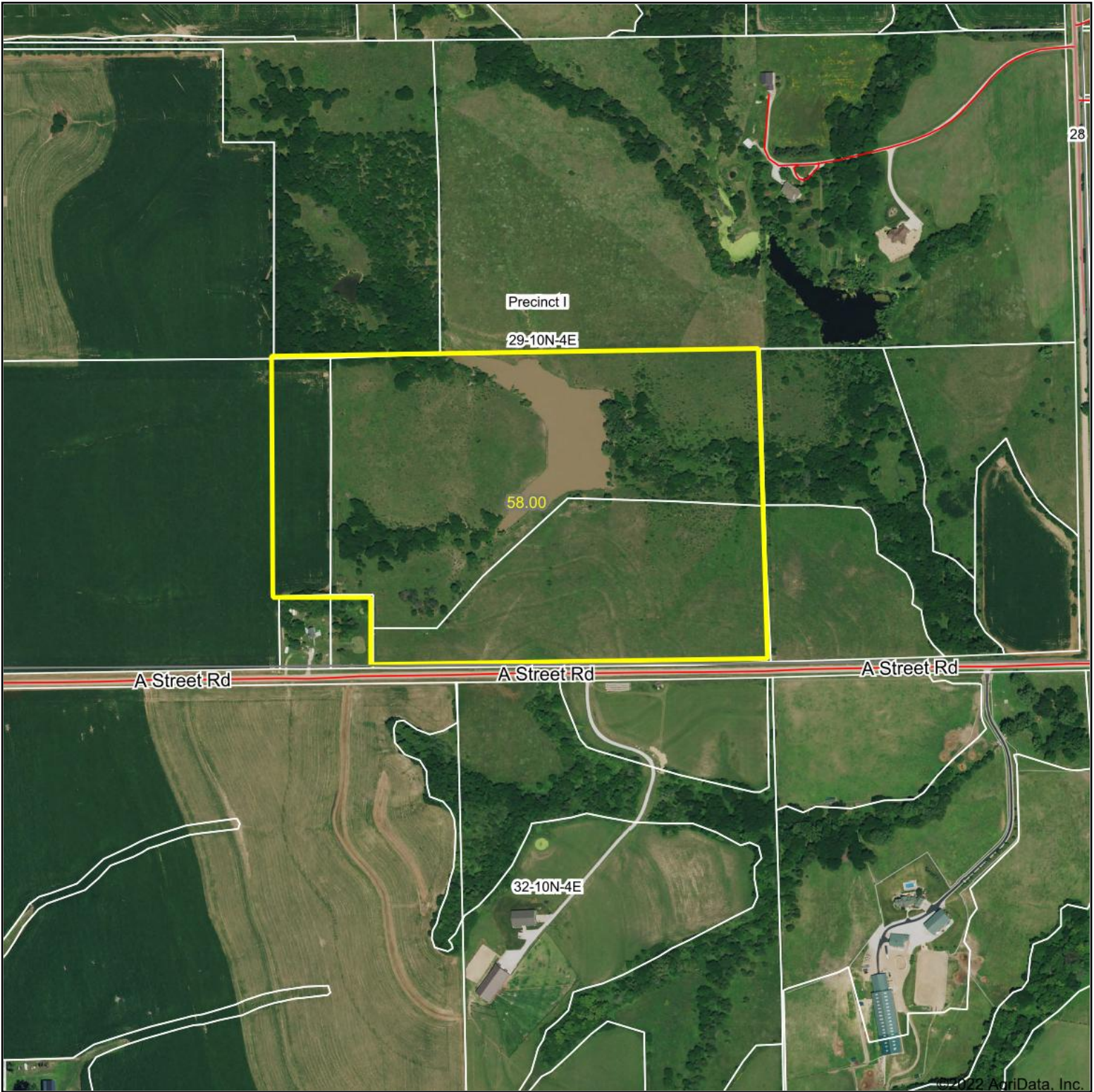


# Aerial Map



Map Center: 40° 48.0658', -96° 59.7134'

**29-10N-4E**  
**Seward County**  
**Nebraska**



9/16/2022

Maps Provided By:  
 **surety**  
CUSTOMIZED ONLINE MAPPING  
© AgriData, Inc. 2021 www.AgriDataInc.com

Field borders provided by Farm Service Agency as of 5/21/2008.