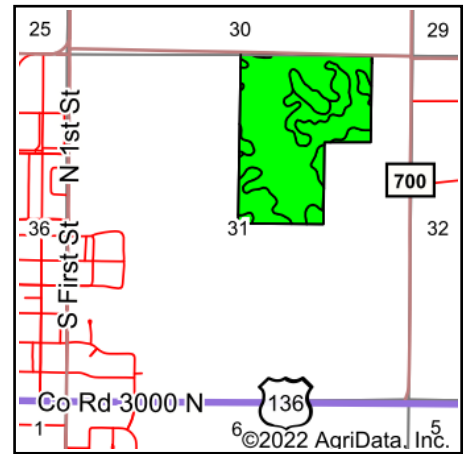
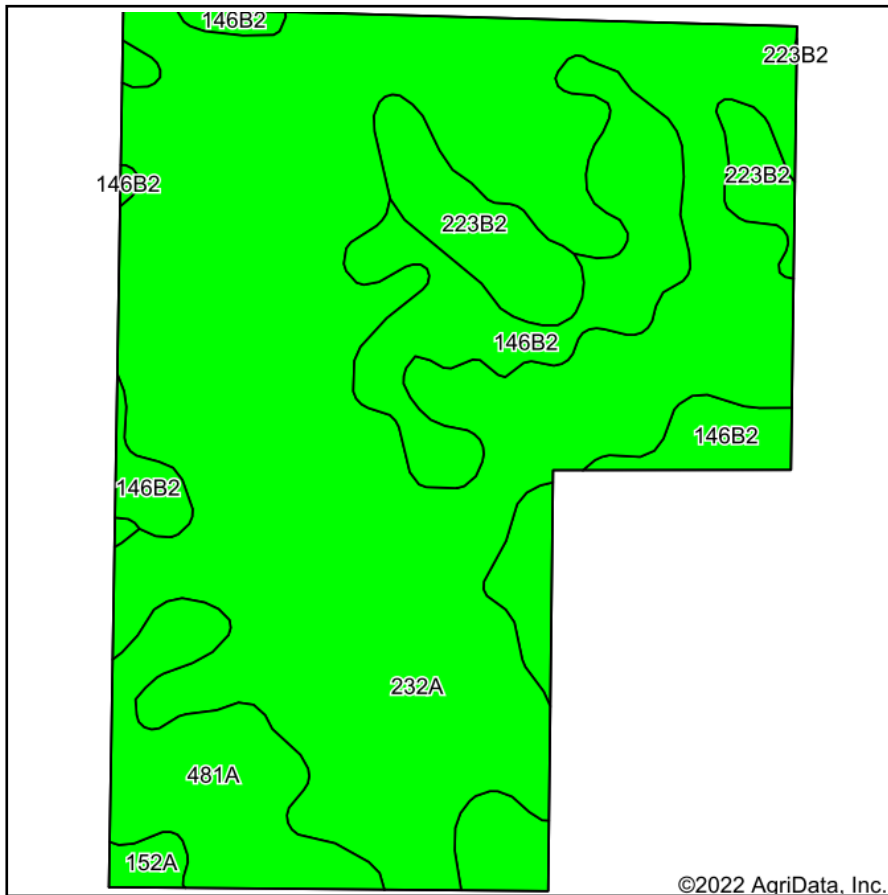


Soils Map - Total Acres



State: **Illinois**
 County: **Champaign**
 Location: **31-22N-8E**
 Township: **East Bend**
 Acres: **100**
 Date: **6/1/2022**

PC PEOPLES
 COMPANY
 INNOVATIVE. REAL ESTATE. SOLUTIONS.

Maps Provided By:

surety
 CUSTOMIZED ONLINE MAPPING
 © AgriData, Inc. 2021 www.AgriDataInc.com



Area Symbol: IL019, Soil Area Version: 16

Code	Soil Description	Acres	Percent of field	Il. State Productivity Index Legend	Corn Bu/A	Soybeans Bu/A	Wheat Bu/A	Oats Bu/A <i>b</i>	Alfalfa <i>d</i> hay, T/A	Crop productivity index for optimum management
232A	Ashkum silty clay loam, 0 to 2 percent slopes	69.15	69.1%		170	56	65	85	0.00	127
**146B2	Elliott silty clay loam, 2 to 4 percent slopes, eroded	16.58	16.6%		**160	**52	**65	**83	0.00	**119
481A	Raub silt loam, non-densic substratum, 0 to 2 percent slopes	7.87	7.9%		183	58	73	102	0.00	134
**223B2	Varna silt loam, 2 to 4 percent slopes, eroded	5.55	5.6%		**150	**48	**61	**75	**4.65	**110
152A	Drummer silty clay loam, 0 to 2 percent slopes	0.85	0.8%		195	63	73	100	0.00	144
Weighted Average					168.5	55.1	65.5	85.6	0.26	125.4

Table: Optimum Crop Productivity Ratings for Illinois Soil by K.R. Olson and J.M. Lang, Office of Research, ACES, University of Illinois at Champaign-Urbana. Version: 1/2/2012 Amended Table S2 B811

Crop yields and productivity indices for optimum management (B811) are maintained at the following NRES web site: <http://soilproductivity.nres.illinois.edu/>

** Indexes adjusted for slope and erosion according to Bulletin 811 Table S3

b Soils in the southern region were not rated for oats and are shown with a zero "0".

d Soils in the poorly drained group were not rated for alfalfa and are shown with a zero "0".

Soils data provided by USDA and NRCS. Soils data provided by University of Illinois at Champaign-Urbana.