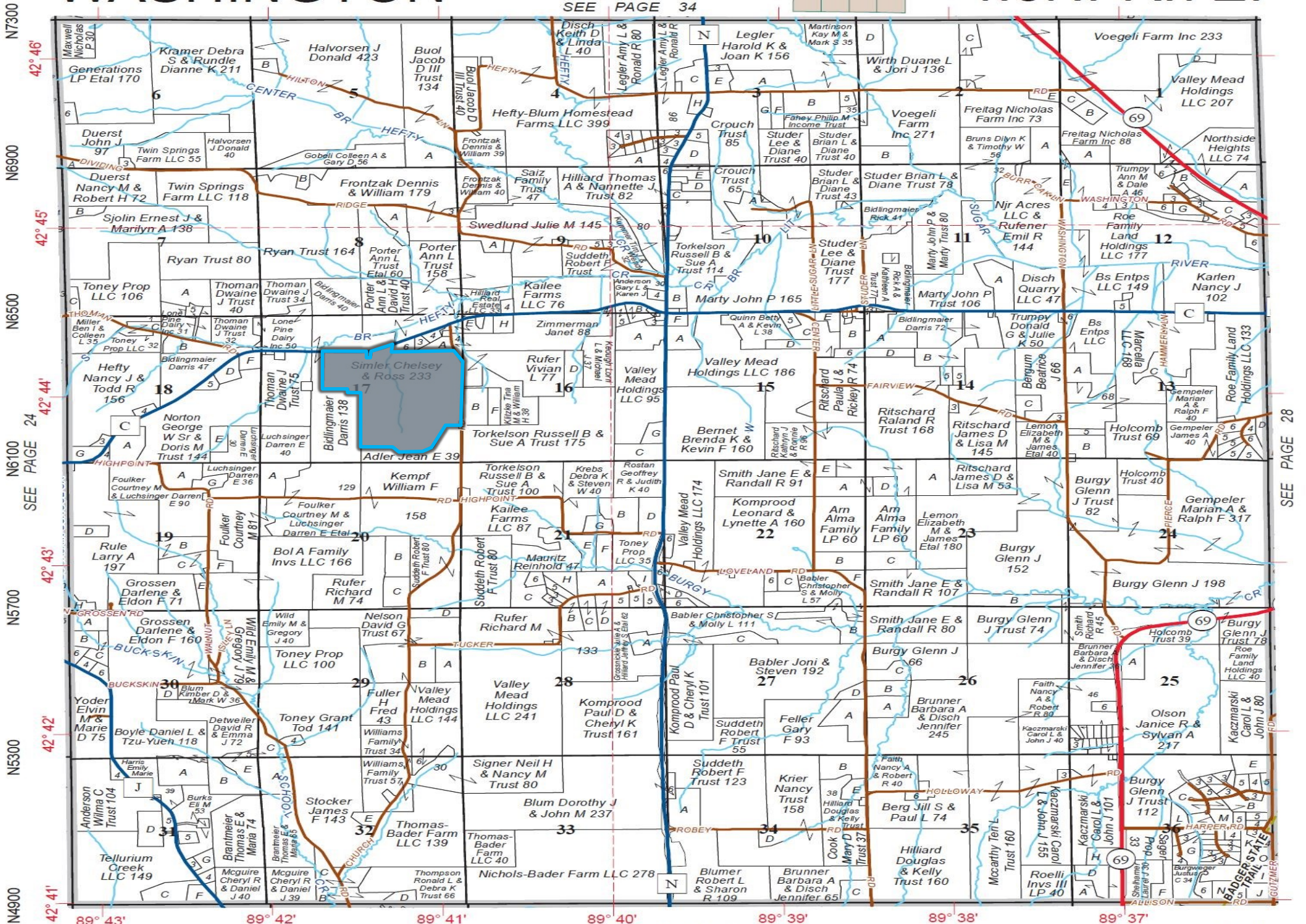


# WASHINGTON

Refer to page 54 for keyed parcels  
**T.3N.-R.7E.**

SEE PAGE 34



N7300  
42° 46'  
N6900  
42° 45'  
N6500  
42° 44'  
N6100  
42° 43'  
N5700  
42° 42'  
N5300  
42° 41'

W7300 W6900 W6500 W6100 W5700 W5300 W4900

© 2020 Rockford Map Publs., Inc.

SEE PAGE 18

Green County, WI

SEE PAGE 28