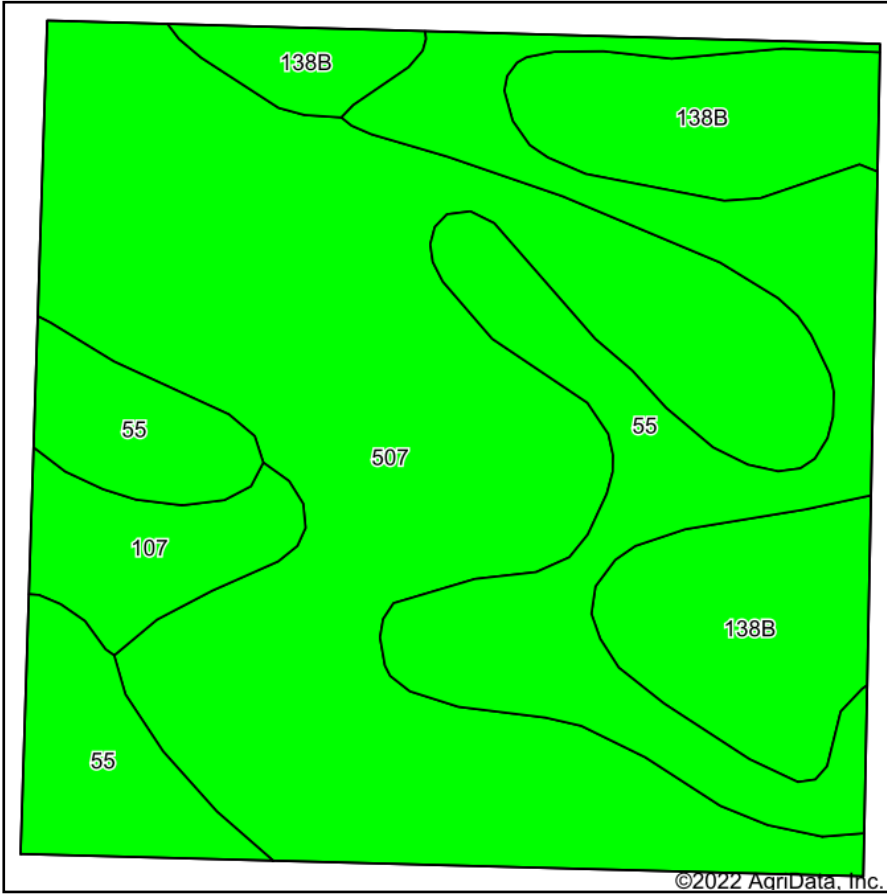
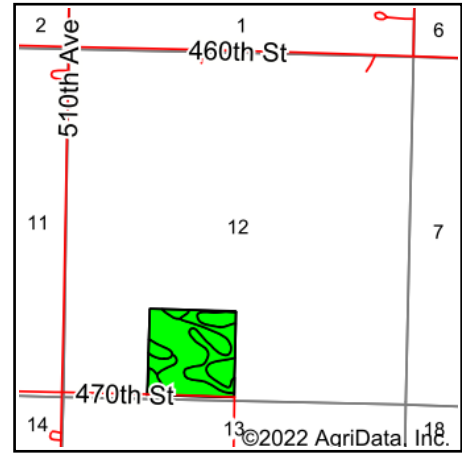


# Soils Map



Soils data provided by USDA and NRCS.



State: **Iowa**  
 County: **Palo Alto**  
 Location: **12-94N-32W**  
 Township: **Ellington**  
 Acres: **39.72**  
 Date: **10/4/2022**



Maps Provided By:



© AgriData, Inc. 2021

www.AgriDataInc.com



Area Symbol: IA147, Soil Area Version: 28

Code	Soil Description	Acres	Percent of field	CSR2 Legend	Non-Irr Class *c	*i Corn Bu	*i Alfalfa Tons	*i Soybeans Bu	CSR2**	*n NCCPI Overall	
507	Canisteo clay loam, 0 to 2 percent slopes	19.88	50.1%		llw	224.0	4.7	65.0	84	81	
55	Nicollet clay loam, 1 to 3 percent slopes	11.46	28.9%		lw	233.6	6.1	67.7	89	82	
138B	Clarion loam, 2 to 6 percent slopes	6.61	16.6%		lle	225.6	6.3	65.4	89	84	
107	Webster clay loam, 0 to 2 percent slopes	1.77	4.5%		llw	224.0	4.7	65.0	86	83	
<b>Weighted Average</b>						<b>1.71</b>	<b>227</b>	<b>5.4</b>	<b>65.8</b>	<b>86.4</b>	<b>*n 81.9</b>

\*\*IA has updated the CSR values for each county to CSR2.

\*i Yield data provided by the ISPAID Database version 8.1.1 developed by IA State University.

\*n: The aggregation method is "Weighted Average using all components"

\*c: Using Capabilities Class Dominant Condition Aggregation Method

Soils data provided by USDA and NRCS.