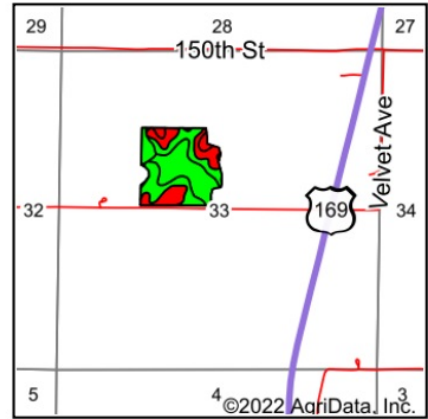
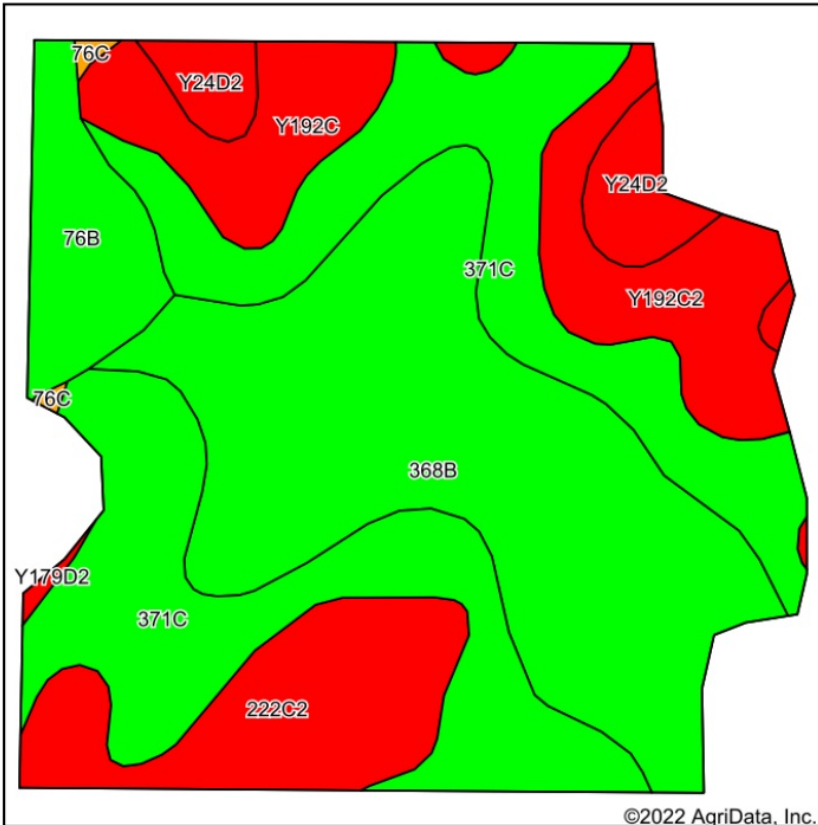


## Tillable Soils Map



State: **Iowa**  
 County: **Union**  
 Location: **33-73N-28W**  
 Township: **New Hope**  
 Acres: **35.09**  
 Date: **12/1/2022**



Soils data provided by USDA and NRCS.

Area Symbol: IA175, Soil Area Version: 25

Code	Soil Description	Acres	Percent of field	CSR2 Legend	Non-Irr Class *c	CSR2**	CSR	*n NCCPI Overall	
371C	Nira-Sharpsburg silty clay loams, 5 to 9 percent slopes	11.43	32.6%		IIIe	88	69	94	
368B	Macksburg silty clay loam, 2 to 5 percent slopes	11.40	32.5%		IIe	89	90	87	
222C2	Clarinda silty clay loam, 5 to 9 percent slopes, moderately eroded	3.53	10.1%		IVw	28	25	53	
Y192C2	Adair clay loam, dissected till plain, 5 to 9 percent slopes, eroded	2.69	7.7%		IIIe	33		63	
Y192C	Adair clay loam, dissected till plain, 5 to 9 percent slopes	2.29	6.5%		IIIe	36		71	
76B	Ladoga silt loam, 2 to 5 percent slopes	2.06	5.9%		IIe	86	82	82	
Y24D2	Shelby clay loam, dissected till plain, 9 to 14 percent slopes, eroded	1.53	4.4%		IIIe	49		73	
76C	Ladoga silt loam, dissected till plain, 5 to 9 percent slopes	0.09	0.3%		IIIe	80	67	79	
Y179D2	Gara loam, dissected till plain, 9 to 14 percent slopes, eroded	0.07	0.2%		IVe	43		73	
<b>Weighted Average</b>						<b>2.72</b>	<b>72.8</b>	<b>*-</b>	<b>*n 82</b>

\*\*IA has updated the CSR values for each county to CSR2.

\*- CSR weighted average cannot be calculated on the current soils data, use prior data version for csr values.

\*n: The aggregation method is "Weighted Average using all components"

\*c: Using Capabilities Class Dominant Condition Aggregation Method

Soils data provided by USDA and NRCS.